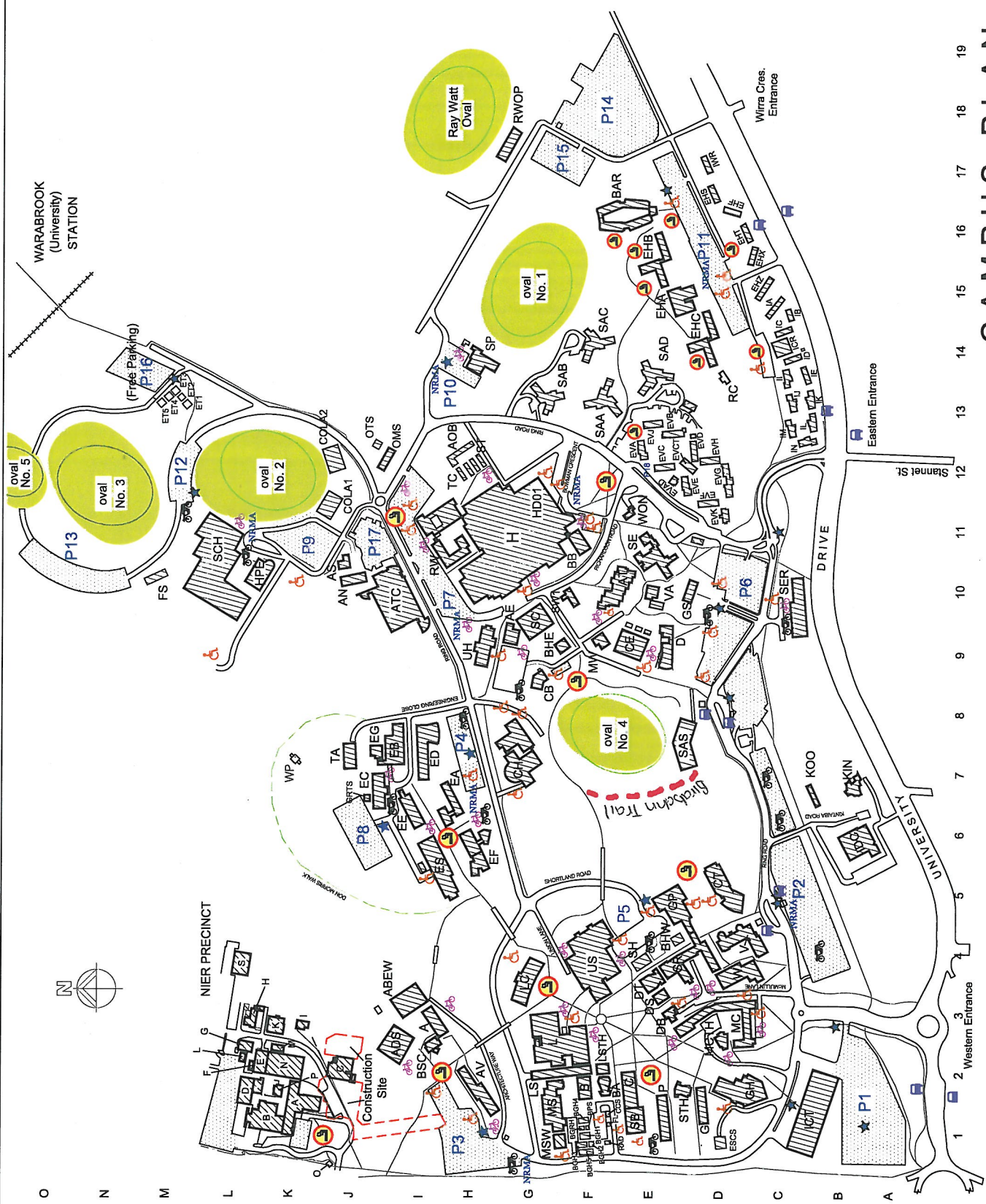


# CAMPUS PLAN

## The University of Newcastle



- |      |   |
|------|---|
| ABEW | ARCHITECTURE & BUILT ENVIRONMENT WORKSHOP |
| A12  | ADVANCED OFFICE BLOCK                     |
| L10  | ANIMAL HOUSE                              |
| L10  | ANIMAL HOUSE STORE                        |
| L10  | ARCHITECTURE                              |
| L2   | ARCHITECTURE DESIGN STUDIO                |
| E10  | ART STUDIO                                |
| F17  | BAR                                       |
| F9   | BAR/UNIBAR                                |
| F1   | BASDEN THEATRE                            |
| D4   | BEHAVIOURAL SCIENCES BUILDING             |
| D4   | BIOLOGICAL SCIENCES GLASSHOUSES 1&5       |
| D8   | BRABAN                                    |
| F11  | BOWMAN BUILDING                           |
| D4   | BRIE HUB WEST                             |
| D4   | BRIE HUB EAST                             |
| L3   | BSC BUILDING                              |
| E9   | CERAMICS                                  |
| G7   | CHEMISTRY (central administration)        |
| B7   | CHILD CARE CENTRE - KINTAIBA              |
| B7   | CHILD CARE CENTRE - KOONDA                |
| F11  | COMMONS                                   |
| F11  | COMMONS (DOWNSIDE) - LEARNING AREA 1 & 2  |
| G9   | COMMONWEALTH BANK                         |
| D5   | COMPUTING & INFORMATION SCIENCES          |
| E9   | CONSTRUCTION                              |
| D3   | DRAMA BUILDING                            |
| E3   | DRAMA STUDIOS                             |
| E4   | DRAMA THEATRE                             |
| D16  | EDWARDS HALL PRECINCT                     |
| H7   | ENGINEERING ADMINISTRATION                |
| J8   | ENGINEERING BULK SOLIDS                   |
| E8   | ENGINEERING CHEMICAL & MATERIALS          |
| E8   | ENGINEERING CIVIL & SURVEYING             |
| E8   | ENGINEERING ELECTRONIC & COMPUTER         |
| L9   | ENGINEERING MECHANICAL                    |
| E8   | ENGINEERING SCIENCE (DOW GEORGE)          |
| M13  | ENGINEERING THERMAL TEST                  |
| E12  | EVATT HOUSE PRECINCT                      |
| F8   | FRIENDS SHED                              |
| G5   | GALLERY: SCHOOL OF FINE ART               |
| E5   | GRASSY AREA                               |
| G15  | GROUNDWATER REMEDIATION TEST SITE         |
| G2   | EARTH SCIENCES                            |
| C2   | GREAT HALL                                |
| G12  | GRIFFITH DUNCAN THEATRE                   |
| H10  | HEALTH & PHYSICAL EDUCATION               |
| G11  | HUNTER BUILDING                           |
| B8   | INDUSTRY DEVELOPMENT CENTRE               |
| B1   | INTERNATIONAL HOUSE PRECINCT              |
| C14  | INTERNATIONAL HOUSE PRECINCT              |
| L3   | LANGUAGE CENTRE                           |
| G11  | LIBRARY - ALCHIMITY                       |
| L3   | LIBRARY - HUXLEY                          |
| F2   | LIFE SCIENCES                             |
| E2   | LIFE SCIENCES THEATRE                     |
| D4   | MATHEMATICS BUILDING                      |
| D3   | McMILLIN BUILDING                         |
| D3   | McMILLIN THEATRE                          |
| F1   | MEDICAL SCIENCES WEST                     |
| F1   | MEDICAL SCIENCES EAST                     |
| L12  | MCINTOSH                                  |
| L11  | MCINTOSH                                  |
| L11  | NURSING LECTURE THEATRE                   |
| G9   | NUISA BUILDING                            |
| L12  | OVALS MACHINERY SHED                      |
| L12  | OVALS TOOLS SHED                          |
| P    | PHYSICS BUILDING                          |
| E1   | PSYCHOLOGY                                |
| H2   | RAY WATT OVAL PAVILION                    |
| G47  | SCULPTURE GALLERY                         |
| D14  | SCULPTURE GALLERY                         |
| D14  | RESIDENCE WEST                            |
| F13  | RESIDENCE NORTH                           |
| D13  | RESIDENCE SOUTH                           |
| L11  | RICHARDSON WING                           |
| C10  | SECURITY BUILDING                         |
| E3   | SCIENCE BUILDING                          |
| F10  | SCULPTURE WORKSHOP 1                      |
| C10  | SERVICES BUILDING                         |
| E4   | SOCIAL SCIENCES BUILDING                  |
| E11  | SPECIAL EDUCATION CENTRE                  |
| L11  | SPORTS CENTRE (THE FORUM)                 |
| G10  | SPORTS PAVILION                           |
| G10  | STUDENT SERVICES CENTRE                   |
| L12  | THE TEACHING CENTRE                       |
| L12  | THE STATION 1-6                           |
| E4   | UNIVERSITY CLUB                           |
| F4   | UNIVERSITY UNION - HUNTER                 |
| F4   | UNIVERSITY UNION - SHORTLAND              |
| H9   | UNIVERSITY UNION - U.S.A.                 |
| D17  | WARDENS RESIDENCE                         |
| K7   | WETLANDS PAVILION                         |

- PARKING (check signs for detail)
- PAY & DISPLAY
- MACHINE POSITIONS
- DESIGNATED SMOKING AREA
- DISABLED PARKING
- MOTORCYCLE PARKING
- BICYCLE RACK
- NRMA
- NRMA MEETING PLACE