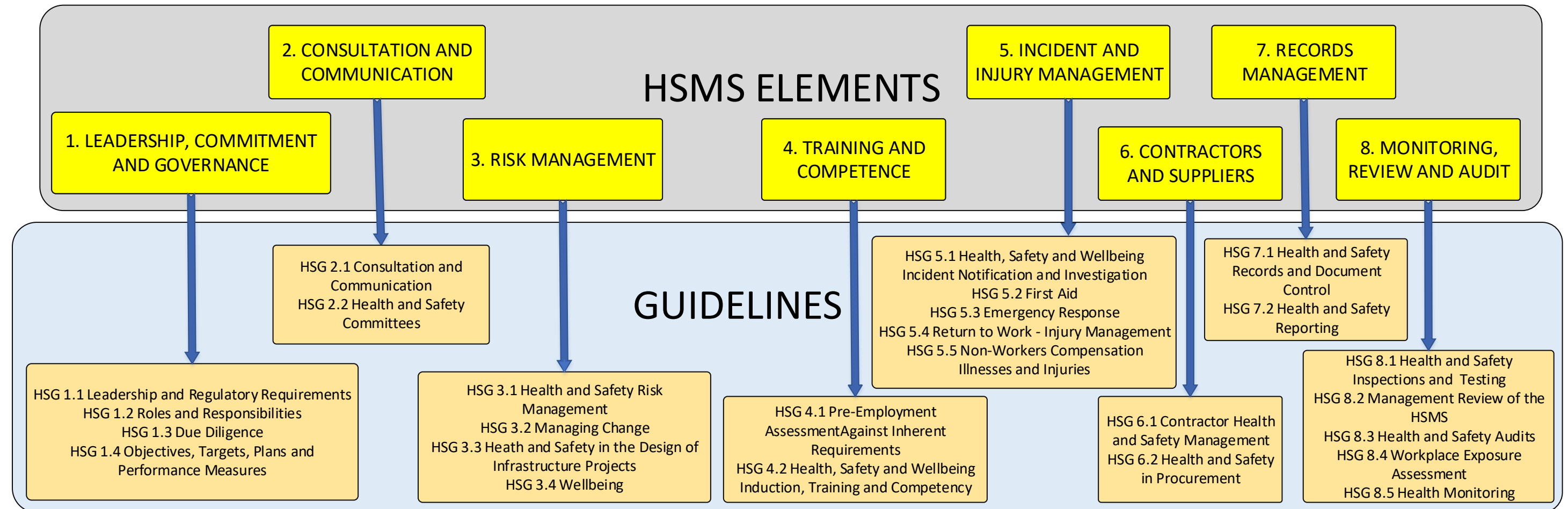


Health and Safety Management System Framework

This framework outlines the Health and Safety Management System Policy, Elements, related Guidelines, and requirements for managing Key Risk Areas at the University of Newcastle

Work Health and Safety Policy



Key Risk Areas (KRAs) and Requirements

KRA 1: Hazards and risks related to Research and Teaching

- KRA 1.1 Chemical Management
- KRA 1.2 Biological Management
- KRA 1.3 Fieldwork
- KRA 1.4 Plant and Equipment
- KRA 1.5 Personal Protective Equipment (PPE) & Clothing
- KRA 1.6 Noise Management
- KRA 1.7 Laboratory Safety
- KRA 1.8 Gene Technology
- KRA 1.9 Radiation Management
- KRA 1.10 SCUBA & Water Based Activities
- KRA 1.11 RPA (Drone) Operations
- KRA 1.12 Standard Operating Procedures

KRA 2: Hazards and risks related to University Environment

- KRA 2.1 Manual Handling and Ergonomics
- KRA 2.2 Smoke-Free University Environments
- KRA 2.3 Working from Home (RESCINDED NOV 2023)
- KRA 2.4 Working Alone or in Isolated Situations
- KRA 2.5 Travelling on University Business
- KRA 2.6 Managing Behavioural Risks
- KRA 2.7 Campus Environment
- KRA 2.8 Supporting a Healthy University (RESCINDED NOV 2023)
- KRA 2.9 Guidelines for Employee Assistance Program (EAP)
- KRA 2.10 Animals on Campus
- KRA 2.11 Identifying and Managing Psychosocial Hazards in the Workplace
- KRA 2.12 University Activities involving Working with Animals (PENDING)

KRA 3: Hazards and risks related to construction & maintenance activities

- KRA 3.1 Working at Height
- KRA 3.2 Working in Confined Spaces
- KRA 3.3 Asbestos and Hazardous Materials Management
- KRA 3.4 Excavation and Demolition
- KRA 3.5 Hot Work
- KRA 3.6 Electrical Safety and Isolation
- KRA 3.7 Electrical Testing and Tagging
- KRA 3.8 Overhead Travelling Cranes
- KRA 3.9 Pallet Racking