

THE UNIVERSITY OF NEWCASTLE BY NUMBERS



**RANKED
197**
in the world¹



39,096
students from 98 countries
educated and supported
by 2,745 staff²



160,000+
alumni based in
152 countries around
the world³



\$14.75M
in donation and sponsorship
income received from 1,708
supporters³



2,745
staff (full time equivalent)⁴



5,242
international enrolments⁵



7,406
graduates across
203 degree programs⁶



1ST
in the sector for Aboriginal and
Torres Strait Islander student
full-time equivalence⁷



**15
SUBJECTS**
ranked in the top 200
in the world⁷



9TH
in Australia for research
income (HERDC),
\$113 million in total⁸



No. 1
in the world for
partnering for a more
sustainable future⁹

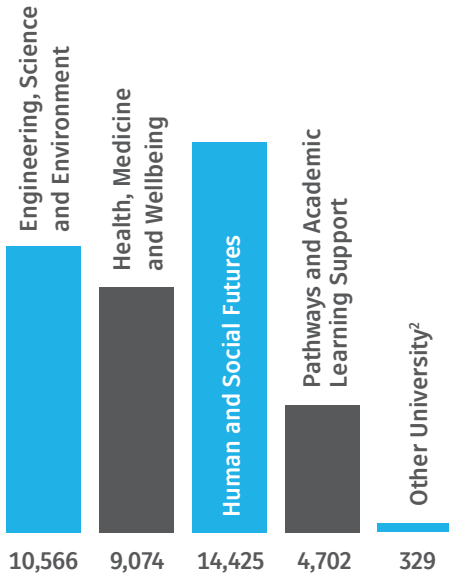


No. 1
university in Australia for
industry collaboration¹⁰

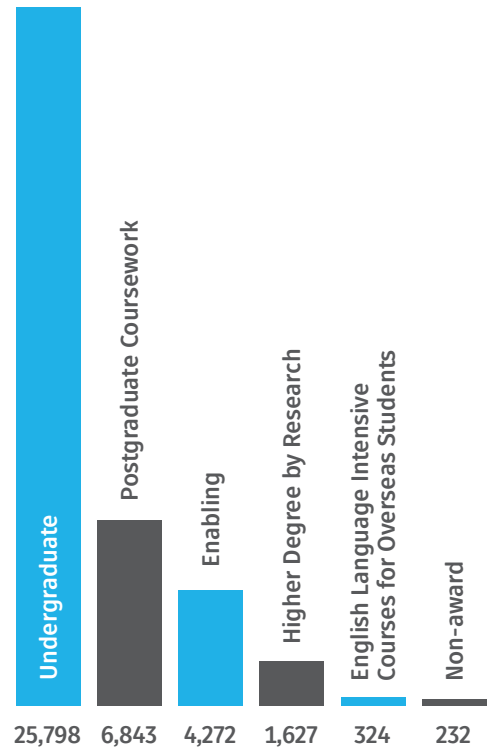
1. QS World University Rankings 2021 2. The University of Newcastle Data Warehouse 23 February 2021 3. Salesforce as at 11 January 2021
4. Department of Education, Skills and Employment Higher Education Staff Statistics. 5. Data Warehouse 23 February 2021
6. Completed program enrolments for undergraduate and postgraduate award programs from 1 April 2020 - 31 March 2021.
7. Department of Education, Skills and Employment Student Statistics 2020 8. The Audited Higher Education Research Data Collection returns 2019
9. Times Higher Education Impact Rankings 2021 10. Innovation Connections IC Report 2014 - 2020

STUDENT ENROLMENTS

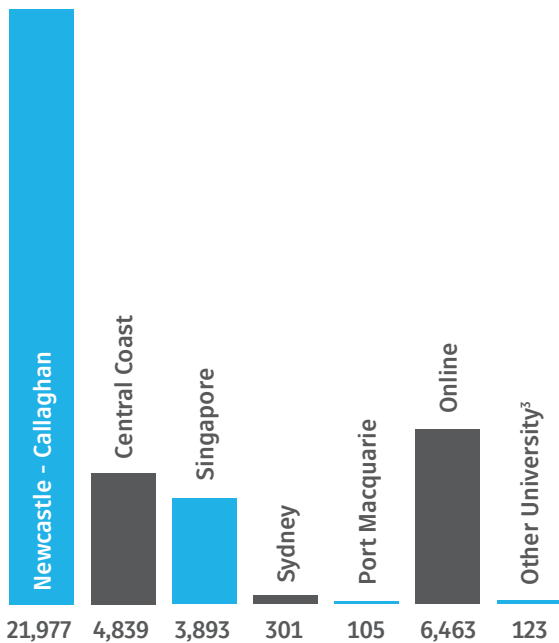
STUDENT ENROLMENTS BY COLLEGE AND AREA¹



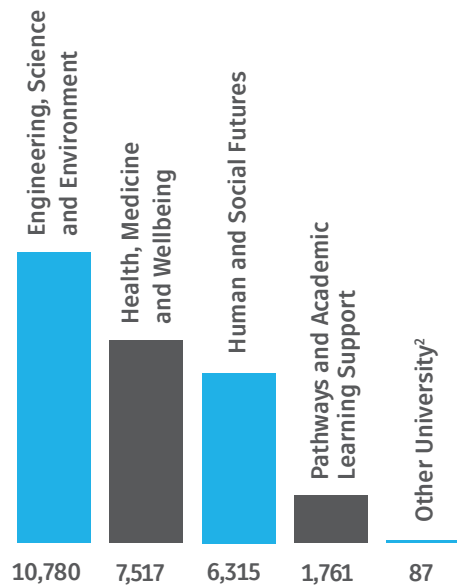
STUDENT ENROLMENTS BY ACADEMIC LEVEL¹



STUDENT ENROLMENTS BY CAMPUS¹



STUDENT LOAD (EFTSL⁴) BY COLLEGE AND AREA¹



STUDENT LOAD AND ENROLMENTS

39,096
student enrolments

5,242
international enrolments

26,460
student load (EFTSL)⁴

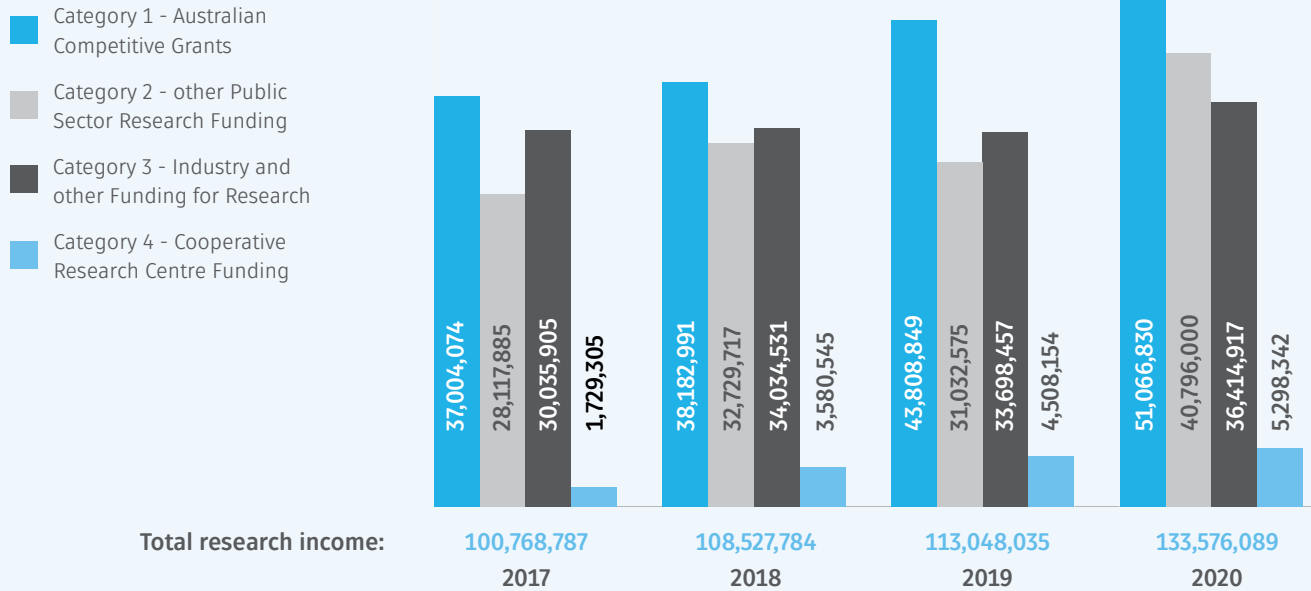
3,829
international load (EFTSL)⁴

17,132
commencing enrolments

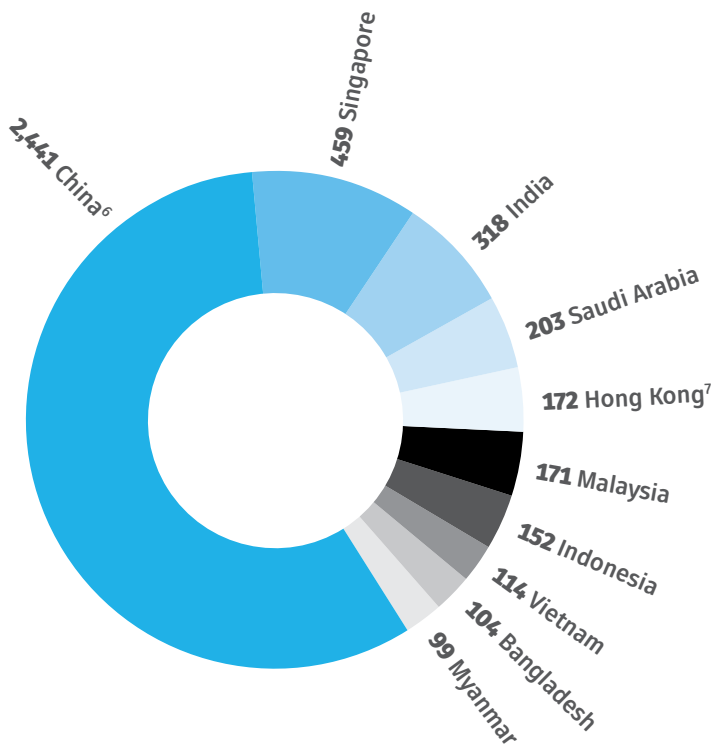
10,663
commencing load (EFTSL)⁴

RESEARCH INCOME

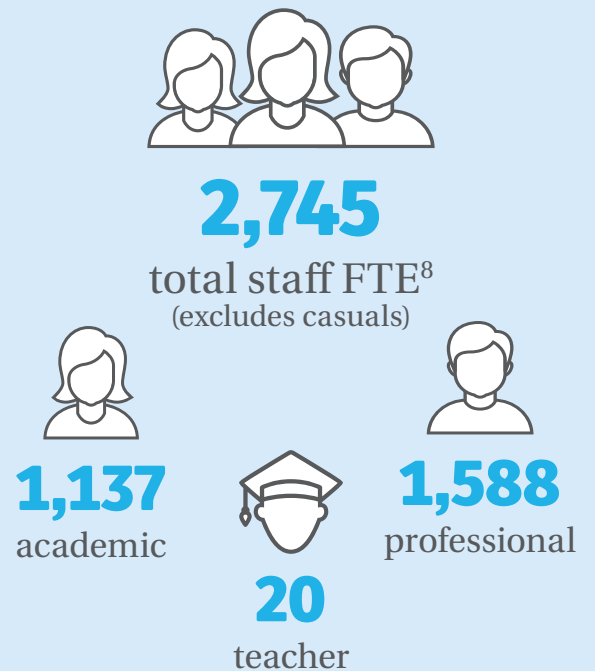
RESEARCH INCOME BY SOURCE 2017-2020⁵



TOP 10 INTERNATIONAL ENROLMENTS BY COUNTRY¹



FIXED TERM AND ONGOING STAFF (FTE)⁹



1. 2021 student data source: The University of Newcastle data warehouse as at 07 February 2022. 2. Other University includes the Wollotuka Institute, non-award studies, exchange and study abroad. 3. Comprises third party locations UN College of International Education Nurture - BINUS Nurture - UTCC 4. Equivalent Full-time Student Load. 5. The 2021 Higher Education Research Data Collection (HERDC) Research Income Return is due for submission to the Commonwealth by 30 June 2022 6. Excludes Special Administrative Regions and Taiwan. 7. Special Administrative Region of China. 8. Full-time Equivalent Staff 9. Department of Education, Skills and Employment, Higher Education Staff Statistics as at 31 March 2021. Note: Rounding errors may apply