

THE UNIVERSITY OF NEWCASTLE'S SCIENCE
AND ENGINEERING CHALLENGE PRESENTS

CRASH COURSE CAD

**FUSION 360 FOR
STEM TEACHERS**

PROVIDED FREE BY
ARTC INLAND RAIL

MONDAY

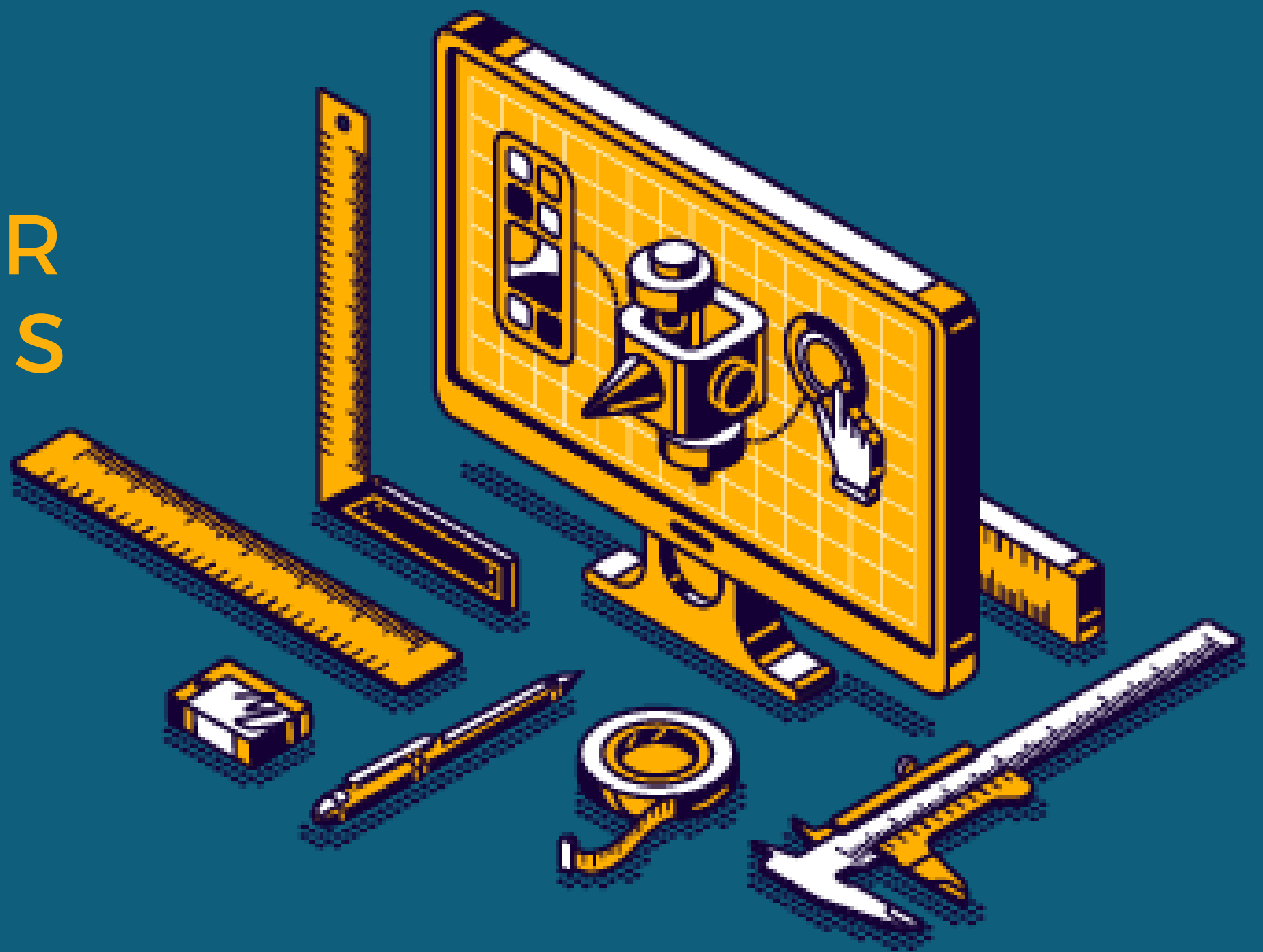
MARCH 27

TERM 1, WEEK 7

9:00 - 15:00

THE SCOTS SCHOOL ALBURY

393 PERRY STREET



**20 PLACES
AVAILABLE**



REGISTRATIONS OPEN NOW!

**INLAND
RAIL**

STEM ON TRACK



THE UNIVERSITY OF
NEWCASTLE
AUSTRALIA



science and engineering
challenge

COURSE AIMS

GET EQUIPPED WITH THE TECHNICAL SKILLS, PEDAGOGY AND RESOURCES TO TEACH FUSION 360 COMPUTER-AIDED DESIGN SOFTWARE FOR 3D PRINTING AND DESIGN WORK IN YOUR STEM CLASSROOM.

TARGET: UPPER PRIMARY AND HIGHSCHOOL STEM TEACHERS

COURSE BREAKDOWN

LEARN CAD. TEACH CAD. PROGRAM CAD.

PHASE 1: FUSION FUNDAMENTALS (SELF-PACED VIDEO TUTORIALS)

PHASE 2: REVERSE ENGINEERING CHALLENGES

PHASE 3: CARDBOARD-AIDED DESIGN CHALLENGES

PHASE 4: IMPLEMENTATION AND ONGOING SUPPORT

Note: You MUST complete the Fusion Fundamentals Projects BEFORE the workshop

SUGGESTED SCHEDULE

NOW

REGISTER

RECEIVE ACCESS TO ONLINE VIDEO AND COURSE CONTENT

DOWNLOAD FUSION 360 AND START LEARNING!

TERM 1, WEEK 4 (ONLINE)

~3X30 MIN

COMPLETE DESIGN PROJECTS 1 - 3

TERM 1, WEEK 5 (ONLINE)

~60, 30 MIN

COMPLETE DESIGN PROJECTS 4, 5

TERM 1, WEEK 6 (ONLINE)

~90 MIN

COMPLETE DESIGN PROJECT 6

TERM 1, WEEK 7: MONDAY MAR 7 (IN-PERSON)

9 AM - 3 PM

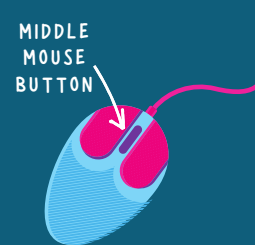
REVERSE ENGINEERING CHALLENGES

CARDBOARD-AIDED DESIGN CHALLENGES

WHAT DO I NEED?



AUTODESK®
FUSION 360



NO QR CODE READER? REGISTER AT:
bit.ly/CrashCourseCADAlbury

QUESTIONS?

bit.ly/WhatIsCrashCourseCAD

pete.newman@newcastle.edu.au || 0418407322