

2023 Postgraduate Coursework Guide



THE UNIVERSITY OF
NEWCASTLE
AUSTRALIA



Contents

- 3 Why study your postgrad degree with us?
- 4 Where you can study
- 6 Student life
- 8 Career-ready graduates
- 9 Entrepreneurial opportunities
- 10 Student success stories
- 12 Professional development
- 13 Which degree is for you?
- 14 How to apply
- 16 Fees and costs
- 17 Uni speak
- 18 Postgraduate degrees
- 26 Key dates
- 27 Engage with expert educators

Thank you for considering postgraduate study with the University of Newcastle.

We are a top 200 university and home to some of the world's best researchers. We are committed to solving global challenges and our leading educators are passionate about sharing knowledge and creating a better future for all. We offer the latest technologies and innovative learning spaces to deliver an exceptional experience.

If you are making a career change or chasing that next promotion, there is a qualification to suit your needs. With over 85 degrees, FEE-HELP options available and the flexibility to shape study around your lifestyle, postgraduate study can make your career goals a reality.

Research

Please note that this brochure focuses on postgraduate coursework degrees. If you are interested in postgraduate research degrees such as the Doctor of Philosophy (PhD) or Master of Philosophy (MPhil), please refer to our website where you will find specific information about these degrees.

newcastle.edu.au/study/research



95%

of our research is 'at' or 'above world standard'¹

Why study your postgrad degree with us?

3

Choosing to study at the University of Newcastle can give you a competitive advantage in your career. Here are some of the top reasons to study with us.

#1

in Australia for Partnering for a Sustainable Future²

1 **Top 200 university in the world³** – here you'll have access to world-class programs, collaborative learning environments, and opportunities to put theory into practice with real-world experiences. Plus, 12 of our subjects are ranked in the top 200 in the world⁴.

2 **More career opportunities and higher salaries** – our graduates are in demand with 93%+ of our postgraduates finding employment within four months of graduating – above the national average. Postgraduates also earn more, with a median salary of \$98,800 – also above national average⁵.

3 **5-star rating** for full-time employment for postgraduate studies⁶

4 **Flexible study options** – study either part-time or full-time; online, face-to-face or a combination of both*, our flexible postgrad programs can be tailored around your busy life. You may also be eligible to translate your real-world experience into course credit.

5 **Connect with industry** – we're the #1 university in Australia for industry collaboration⁷. If you have passion, drive and big ideas, we're here to help you make them a reality with industry partnerships and practical experience that will see you graduate with valuable professional connections.

1 Excellence in Research Australia, 2018
2 Times Higher Education Impact Rankings 2022
3 QS World University Rankings 2022
4 QS World University Rankings by Subject 2022

5 QILT Graduate Outcomes Survey 2019 - 2021
6 The Good Universities Guide 2021
7 Innovation Connections IC Report 2014 - 2020

* Not all modes of study are available for every program.

Where you can study

Our campuses are welcoming and collaborative environments.

No matter where you study – whether it's Newcastle (Callaghan and City), Central Coast (Ourimbah and Gosford), Sydney CBD, or online, you'll be able to connect with like-minded individuals and expert educators.

 newcastle.edu.au/campus-life

Newcastle (Callaghan)

Our Newcastle Callaghan campus is a central hub for education, humanities, social science, and the fields of science, technology, engineering, mathematics, health and medicine. The region's largest hospitals, the Hunter Medical Research Institute, schools, early childcare facilities, and local defence and industrial hubs are all in close proximity to our campus. Also located at our Newcastle Callaghan campus, NUsport at The Forum offers state-of-the-art health and fitness facilities and programs to help maintain your physical and mental wellbeing.

Newcastle (City)

In the heart of the CBD, our Newcastle City campus provides an integral link with industry in creativity, business and law. Home to the Newcastle Law School and Newcastle Business School, NUspace harnesses the latest in technology and innovation to deliver a world-class student experience.

Overlooking Newcastle harbour, Q Building is home to creative industries as well as our Integrated Innovation Network (I2N) Hub, with specialised studios and technologies, and shared spaces to connect with staff, industry, and community.

Just a few minutes walk from Q Building, The Forum Harbourside offers leading health and fitness facilities in a convenient location.

Sydney CBD

Our Sydney campus is right in the heart of the CBD offering world-class facilities and innovative styles of learning. Located on Elizabeth Street, our business programs have been developed and designed with industry professionals. Close to transport links, it's easy to make the transition from work to class.



Newcastle City campus, NUspace



Central Coast Clinical School, Gosford

Central Coast (Ourimbah)

Only an hour drive from Newcastle or Sydney, our Central Coast campus at Ourimbah offers study programs in exercise and chronic disease management, exercise physiology and psychological science.

Central Coast (Gosford)

Strategically located on the grounds of Gosford Hospital, our world-class Central Coast Clinical School has transformed the region into a leader in health, research, innovation, and education. Our state-of-the-art facility offers an immersive learning environment with a three-ward simulation centre, anatomy and histology laboratory, research laboratories, virtual reality spaces and more. Our students benefit from strong links with local industry and partnerships with the Central Coast Local Health District for midwifery, nursing and specialised health degrees.

We acknowledge the traditional custodians of the lands within our footprint areas:

Awabakal, Darkinjung, Biripai, Worimi, Wonnarua, Gomeroi and Eora Nations. We pay respect to the wisdom of our Elders both past and present. We also acknowledge and pay respect to the other Aboriginal and Torres Strait Islander nations from which our students, staff, and community are drawn.

Online

Many of our postgraduate students choose to study online. Our online learning platform is learner-centred and caters for the needs of busy professionals, giving you complete control over when and where you study. Some of our programs even offer mixed mode, so you can choose to take some courses online and others face-to-face to suit your needs and learning preferences. This provides you with flexibility when juggling work, personal life, and study.

Regardless of distance, our online learning systems allow you to interact with fellow students in a highly collaborative environment, guided by a university educator.



Hear more from postgrad students on flexible study options.

Student life

Student life is all about making the most of your time at university. One of the great things about the University of Newcastle is that there's always something happening on campus.



newcastle.edu.au/uni-life

Campus essentials

We have a range of cafés, restaurants and bars across our campuses, so if you are looking for a coffee or drink, or a bite to eat, we've got you covered.

Student life is made easier with a medical centre and pharmacy, post office, retailers including The Shop (university merchandise), childcare, counselling, student kitchens, and prayer rooms.

newcastle.edu.au/services

Study around your commitments

"I chose the University of Newcastle because it enabled me to study online and remotely. Juggling work, life and study was really challenging and required a strict discipline to study in the evenings and at the weekends"



Joanna

Master of Disaster Resilience and Sustainable Development

"The flexibility of online study worked well, as I enjoyed the mix of face to face and online when juggling study and day to day life."



Eni

Master of Data Science



Clubs, societies and events

University of Newcastle Student Association (UNSA) is the student association at the University, representing and supporting students at all campuses and is home to more than 120 clubs, societies, and social groups.

newcastle.edu.au/clubs

Staying active

NUsport at The Forum University (Callaghan), and Harbourside (Newcastle City) offers state-of-the-art health and fitness facilities. You'll find the Hunter Region's premier 50m indoor heated swimming pool, extensive group fitness options and a range of strength and cardio equipment.

Indoor courts cater for casual hoops and structured social sport competitions all year. Join one of many sporting clubs or compete in the representative inter-university competition, UniSport Nationals. Also located at NUsport at The Forum University is a café and physiotherapy clinic.

NUsport at the Forum (Ourimbah) Pop Up Gym is now open and offers fitness equipment and small group fitness programs.

theforum.org.au

There are plenty of outdoor spaces with sporting fields, shared paths and dedicated fitness trails on campus.

Getting around



The nearest train or tram stops to our campuses include:

- Warabrook (Newcastle Callaghan)
- Civic (Newcastle City)
- Ourimbah or Gosford (Central Coast)
- Martin Place or St James (Sydney)



Beautiful bike paths are available on and surrounding campus, and our bike hubs, at Callaghan and Newcastle City campus, offer showers and secure storage.



A free city shuttle runs between Callaghan and Newcastle City campus every 30 minutes during semester and hourly during semester break. All campuses are connected to local bus networks.

Accommodation

If you are planning to move to study with us, it doesn't have to be daunting. At both Callaghan and Ourimbah campuses, we offer convenient and award-winning accommodation options. Our diverse range of living environments has something to suit all students, including postgraduates and those requiring accessible options.

newcastle.edu.au/accommodation

The Wollotuka Institute

Since 1983, the Wollotuka Institute has provided guidance and support for Aboriginal and Torres Strait Islander students during their study. In this welcoming and culturally affirming environment, you'll be supported by experienced staff, Elders, cultural leaders, and fellow students who help build feelings of belonging and confidence, contributing to your success.

newcastle.edu.au/wollotuka

Student support

There are a range of student support services available to help you through your studies, such as:

- **Careers and Student Development:** access advice to help make decisions about your future career, as well as develop your job search skills through workshops, practise interview sessions, and get help updating your resume.
- **Academic Support:** our Program Advisors can provide you with information about your enrolment and academic progress. Reach out to our Learning Advisors for tips, workshops and resources to help you, no matter how long it has been since you last studied.
- **AccessAbility Services:** we offer a range of services to enable students living with disability or a medical condition to access support across our campuses.
- **Health and Wellbeing Support:** there are multiple on-campus services, including a medical centre at both Callaghan and Ourimbah campuses, a pharmacy, a physiotherapy clinic, and pathology service at Callaghan, as well as an oral health centre at Ourimbah. Both Callaghan and Ourimbah offer professional psychologists and social workers available for free sessions to help with personal or study-related issues. Those enrolled at our Sydney campus or studying online can access a range of free online counselling options.

newcastle.edu.au/current-students/support

Career-ready graduates

Your degree can be more than just textbooks and tutorials, libraries and lectures. When you study with us, you'll collaborate with teachers, industry professionals, other students and participate in interactive learning. Maybe you'll advance your teaching skills in a simulated classroom, or use 3D printing to develop a prototype for your high-rise design.

The way we teach is innovative and always changing – so you'll be ready to advance your career or embark on a new one when you graduate.

We're home to Australia's only UNITAR accredited training centre – CIFAL Newcastle

Study electives aligned to the United Nations Sustainable Development Goals and get United Nations certification for your studies.

cifal.newcastle.edu.au



#1

university in Australia for industry collaboration¹

The University of Newcastle prides itself on collaborating with various industries through the design of our degrees, work-integrated learning, leadership and entrepreneurial programs and professional accreditation.

"The program was particularly attractive as it not only provided UNITAR-CIFAL certifications for specific units of study, but the courses were designed in such a way that I could apply learnings directly to my professional role. This has increased my exposure to and understanding of a variety of perspectives and ways of thinking."

Bron

Director, Australia & New Zealand Emergency Management Committee Program Management Office
National Recovery and Resilience Agency
Master of Disaster Resilience and Sustainable Development



Entrepreneurial opportunities

If you have passion, drive and big ideas, we're here to help make them a reality. That's why we give you countless opportunities to fine-tune your skills, make the right connections and take your ideas to the next level.

Integrated Innovation Network (i2N)

i2N is the University's epicentre of entrepreneurship. Its headquarters, located at Honeysuckle, is purpose-built to drive enterprise skill development and startup success with state-of-the-art facilities including a makerspace and free coworking for prestartups. Connect to a community of change-makers, and their supporters, by engaging in a range of free networking events, hackathons, mentoring, and pre-accelerator programs.

newcastle.edu.au/i2n



"Winning first place for my business idea 'My Green Haven' was a wonderful experience. The prize will allow me to receive the support and guidance I will need in these early stages of setting up a business."

Tanja

Master of Business Administration/Master of International Business
Start It Up Pitch competition winner 2022

iLEAD

iLEAD is the leadership program you need to position yourself as an adaptive and engaged leader in a global marketplace.

iLEAD is a globally-focused leadership program that connects you with local, national and international networks and experiences to accelerate your professional development and career readiness. Through carefully curated workshops, mentoring relationships and industry experiences, you'll develop a set of skills, traits and perspectives that will position you as a leader of tomorrow.

newcastle.edu.au/ilead



"Through the iLead program I was given the opportunity to lead a team, and I want to do it again and improve my skills. I want to inspire people like they inspire me."

Chiara

Master of Business Administration/Master of International Business



Student success stories

Suraj

Practising Medical Doctor
Master of Public Health

"This program will support my current career. It will help me to take care of people at individual and community levels. Furthermore, it also opens the door for other positions and helps me get involved in promotive and preventative health policies and practices at the community and country levels."



Julia

External Relations
NewPsych Psychologists
Master of Business Psychology

"The Master of Business Psychology prepares students to undertake a variety of roles within a number of different sectors such as human resources, management, recruitment, learning and development, and change management. I gained a better understanding of these key sectors and business structures."



Robert

Civil Engineer
AECOM
Project Management

"The intent of completing this course was to expand my knowledge in the field of project management. With all projects there is a considerable amount of work to identify, manage stakeholders and ensure that effective communication strategies are employed- this is something that I identified early in the course and was able to utilise on a number of projects."



Claudia

Architectural Technician
SHAC
Master of Architecture

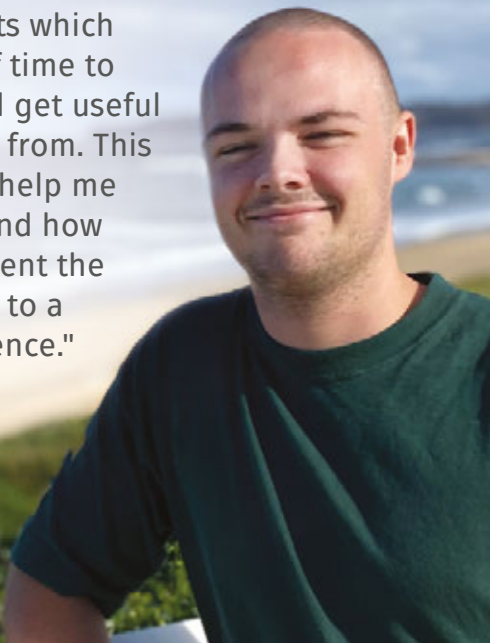
"This degree will help me on the pathway to becoming a registered Architect. It expands on the creative thinking of the bachelor's degree and focusses on higher research and self-directed projects, similar to that in real practice. The chance to dive into a yearlong thesis project for my final year is something that will stand out in my portfolio."



Ted

Resilience and Climate Change Adaption Graduate
Sydney Water
Bachelor of Science, 2022
Master of Data Science

"I am tasked with understanding how our assets are affected by climate change and how we can be mitigating these issues. I work with lots of spreadsheets which take a lot of time to prepare and get useful information from. This degree will help me to understand how best to present the information to a larger audience."



Michelle

Assistant Business Manager
Belmont Christian College
Master of Business Administration

"Apart from having formal qualifications to provide credibility and substance to my employability, I have also found that skills and knowledge I already had have been deepened/expanded and updated, and I have been surprised by how relevant these skills and this knowledge has been in my day to day activities."




Professional development

Our courses and degrees have been created to ensure you receive the necessary skills to succeed in your chosen career path.

We have some of the world's best university professionals and external consultants who are specialists in their fields. They are selected for their superior academic qualifications, corporate experience, and excellent presentation skills.

Our courses draw on the latest research, are taught using relevant industry examples, and have a strong practical focus. This dynamic combination of theory and problem-based learning achieves maximum learning outcomes.

 newcastle.edu.au/study/professional-development

Short Courses

Whether you want to do a six-week online taster course, single subject or a six-month Graduate Certificate, we offer a range of options to help you kick-start your graduate learning.

Non-Award and Cross Institutional Study

Hundreds of undergraduate and postgraduate courses (subjects) across a range of disciplines and campus locations are offered at the University of Newcastle.

Depending on whether you are studying at another university and want to include one of our courses in your degree, or just want to take a single course to increase your knowledge and skills in a particular area, you can apply to study a single course. Non-award courses are not eligible for FEE-HELP, meaning you must pay all tuition fees by the census date.

newcastle.edu.au/non-award-admission

TIP!

If the course is relevant to your current career, speak with your manager about covering costs as part of professional development.

Open Online Courses

We offer open online courses across a range of subject areas. Courses are free to study, however students have the option of purchasing a certificate to verify their participation.

Open courses are a great way to sample a range of study and research areas from across the University and provide you with an insight into studying if some time has passed since you last picked up a textbook.

newcastle.edu.au/online-learning



Which degree is for you?

There are over 85 postgraduate coursework degrees available for you to choose from. Whether you want to dip your toes into further study via a Graduate Certificate or are ready for a longer commitment via a Graduate Diploma or Masters qualification, there is something available to suit your needs.

 newcastle.edu.au/degrees

TIP!

Always check the program handbook available via a degree's dedicated web page, where you will find admission requirements and other information to help you decide if the program is right for you.

Graduate Certificate

40 units typically completed in 0.5 years full-time study or part-time equivalent, designed to achieve the specified learning outcomes. The Graduate Certificate qualifies individuals who apply a body of knowledge in a range of contexts to undertake professional or highly skilled work and is a pathway for further learning.



Graduate Diploma

80 units typically completed in one (1) year full-time study or part-time equivalent, designed to achieve the specified learning outcomes. Graduate Diplomas can also provide a pathway to further learning.



Masters

A Masters Degree (Coursework) program is typically one (1) to two (2) years full-time or part-time equivalent, designed to achieve the specified learning outcomes. These degrees can vary in length; some are 80 units with the longest being 240 units.



Higher Degrees by Research (HDR)

A Doctor of Philosophy (PhD), typically completed in four (4) years full-time or Master of Philosophy (MPhil) degree, typically completed in two (2) years full-time, will connect you with the top tier of researchers. This opens up incredible opportunities to advance your career, pursue breakthrough discoveries, and solve the world's most formidable problems. The University offers over 180 Higher Degrees by Research for you to choose from.

While some choose to undertake coursework first through a Masters qualification, depending on your background and experience you can move directly into a PhD or MPhil degree.

newcastle.edu.au/study/research

How to Apply



For most postgraduate coursework degrees, you can complete an easy, online application form. Applying only takes around 10 minutes and there is no fee for direct applications.

 newcastle.edu.au/study/postgraduate/apply

Credit

If you have previously completed postgraduate studies (either single courses or a full degree program), it may count as credit towards your University of Newcastle postgraduate program.

You will need to prepare the required supporting documentation before starting the credit application process. Consider the age of your prior qualifications.

Apply early! It can take up to three weeks for a full assessment of your credit application. To guarantee that you receive an outcome prior to the census date of your first term of study, please ensure that you submit your credit application at least three weeks before the start of term.

newcastle.edu.au/study/postgraduate/credit

Recognition of prior learning

For some degrees, if you have additional qualifications or experience above what is required for admission, you may be eligible for recognition of prior learning (RPL). This means you can complete your degree faster with fewer courses to undertake. Where relevant, different pathways are outlined on each degree page on our website.

International applicants

If you are not an Australian citizen, New Zealand citizen, or the holder of an Australian Permanent Residency visa, you are able to apply directly through our International Office or via an education agent depending on your home country.

newcastle.edu.au/study/international/how-to-apply

Application closing dates

We have multiple intakes available each year for our postgraduate coursework degrees. You can check which intakes are available for your chosen degree in the 'fast facts' section on the degree's dedicated webpage.

If you are applying directly to the University of Newcastle, please adhere to the application closing dates listed on this page. All required supporting documents must be received by these dates. Applications received after these dates will be considered for the next available intake.

newcastle.edu.au/study/postgraduate/apply

Direct application closing dates

Semesters 2023

Semester 1	5 February
Semester 2	2 July

Trimesters 2023

Trimester 1	8 January
Trimester 2	23 April
Trimester 3	6 August

Winter 2023

Winter Term	28 May
-------------	--------

Universities Admissions Centre deadlines

If you wish to apply for one of the following programs, you will need to submit an application to the Universities Admissions Centre (UAC) by the applicable deadline.

uac.edu.au

- Master of Clinical Psychology
- Master of Professional Psychology

Note: This list is subject to change. Please visit our website for current information.

Supporting documentation

We may require multiple certified supporting documents to assess your application, including proof of identity and previous education if you have not previously studied at the University of Newcastle.

Any documentation submitted must be in colour or a black and white certified copy.

To have your documents certified, you will need to provide both the original and the copy to the person certifying the document.

The University of Newcastle accepts documents certified by:

- an authorised employee of a tertiary or higher education institution who can sign and stamp the copies
- a Justice of the Peace who will sign and include their name and registration number
- a person currently employed as:
 - accountant
 - bank manager
 - credit union branch manager
 - barrister, solicitor or attorney
 - police officer of the rank of sergeant or above
 - postal manager
 - pharmacist

newcastle.edu.au/postgrad/supporting-documentation

Preparing and submitting your application

To ensure that the process goes smoothly for you, complete the following steps before applying:

1. Review the program that you wish to apply for.

Note the admission criteria, admission instructions, available intakes, application deadlines, requirements and structure, and any additional information listed.

2. Review the program fees and costs.

3. Prepare any necessary certified supporting documents for upload.

If you are from a non-English-speaking background, you need to satisfy the University's English language requirements and ensure that you can provide evidence of your English proficiency if requested.

4. Navigate to the application page.

Apply directly through the University of Newcastle via the web page askuon.newcastle.edu.au/app/apply/postgraduate

5. Complete each section of the form.

You will need to provide information on personal and contact details, confirm your citizenship, give a summary of your previous study and/or work experience as well as confirm the type of study that you wish to complete. Please take the time to view the help points listed for many of the application questions.

Based on the information that you provide, you will be required to upload supporting documentation prior to submitting your application.

Upon submission of your online application, you will be notified by email that it has been received. Please keep this email for your records.

6. Our Admissions staff will contact you to discuss any additional required supporting documentation.

7. Apply for a Unique Student Identifier (USI)

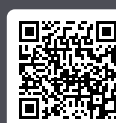
A USI is your individual education identifier. It is required that you obtain a USI in order to receive Commonwealth financial assistance and/or obtain your qualification. You will need to enter your USI before enrolling in courses through myHub. You can create a USI, or if you are unsure if you have one you can find it, by visiting usi.gov.au/students/get-a/usi

If you wish to discuss your application, please contact our Admissions team at admissions@newcastle.edu.au.



Watch Now

Learn some useful tips to help with your application



All dates are subject to change.

*Please note that the Graduate Diploma in Psychological Science has a strict Semester 1 2023 application closing date of Sunday 15 January 2023. No late applications will be accepted. The Master of Teaching (Primary) and Master of Teaching (Secondary) have alternate strict application closing dates. Trimester 1 applications close Monday 2 January 2023. Trimester 2 applications close Sunday 16 April 2023. The Master of Nurse Practitioner for Trimester 1 has a strict application closing date of 27 November 2022. Applications submitted through UAC have different closing dates to those listed in this guide and can vary depending on the degree. Check the website for the most up-to-date information.

Fees and costs

Postgraduate programs at the University of Newcastle are offered as either Commonwealth Supported or on a full fee-paying basis.

 newcastle.edu.au/postgrad/fees-costs

Application fee

It is free to complete an application for programs that offer direct entry through the University of Newcastle. A fee applies for applications that must be made via the Universities Admissions Centre (UAC).

Commonwealth Supported Places

A number of our postgraduate programs offer Commonwealth Supported Places (CSP), which means eligible students will be charged at the Commonwealth supported rate of student contribution instead of as full fee-paying students. Eligible students can defer their student contributions by accessing HECS-HELP.

newcastle.edu.au/postgrad/fees-costs

Fee-paying programs

Fee-paying programs are degrees which do not have Commonwealth Supported Places.

Eligible domestic students can apply for an interest-free loan from the Australian Government through the FEE-HELP loan scheme. As per the arrangement with HECS-HELP, this means you only start paying your course fees once your salary is at the minimum level to start making payments.

Financial Assistance

Whatever your background and financial status, we have support systems available to help with the costs involved with studying, including scholarships and emergency loans. You also might be eligible for Australian Government assistance with HECS-HELP and FEE-HELP loans, and income support.

newcastle.edu.au/financial-assistance

Financing your studies

If your studies are related to your current work activities, out-of-pocket course fees may also be tax deductible. Check with the Australian Taxation Office to see what you can claim.

The University also has a number of scholarships available to both domestic and international postgraduate students.

newcastle.edu.au/scholarships

Student Services and Amenities Fee

All students must pay a Student Services and Amenities Fee (SSAF) to assist with the funding of non-academic student services and amenities available to students. Eligible students can defer payment of this as part of the enrolment process.



Whether you are undertaking higher education for the first time or are a seasoned student, this directory defines some useful concepts to help you along the way.

Bridging and refresher courses

Free, interactive online courses you can enrol in to help refresh your knowledge on key subject areas as well as courses on academic skills if you are new to higher education.

newcastle.edu.au/nuprep

Canvas

The University's Learning Management System provides access to your course outline, content, and announcements. It is also where you will submit assignments, receive grades and feedback.

Census Date

The last day to withdraw or drop a course without financial penalty.

College

An organisational unit with responsibility for academic programs, often with a number of sub-units called Schools. All degrees will be owned by a particular College of the University.

Commonwealth Supported Places

Available for select programs, eligible students are charged at the Commonwealth supported rate of student contribution instead of as full fee-paying students. Payment can be deferred.

Combined degrees

A combined degree means you study two degrees at once. You will then graduate with two qualifications in less time.

Course

A course refers to the individual subject you are taking. A program or degree is made up of multiple courses worth 10 or more units each.

Intakes:

Semester: this is an academic teaching period, which is 13 weeks in duration. There are two semesters in a year.

Trimester: this is an academic teaching period, which is 12 weeks in duration. There are three trimesters in a year.

Learning formats

Blended Learning: enables you to master course content independently through a variety of online learning and face-to-face workshops as a lecture group to engage with materials on a deeper level and actively work through course materials.

Laboratories: gives you a chance to experiment and practise what you are learning.

Lectures: provides the theory component of your area of study in an interactive and engaged environment.

Tutorials: small classes run by tutors where students have the opportunity to explore and ask questions.

Workshops: active classes that give you a chance to practise what you are studying in an engaged environment.

Captured Lectures (through UONCapture): provide slides and audio recordings of your lectures to allow you to listen back and review lecture materials in your own time.

myHub

Online service page for students to access enrolment and fee information, and to update personal details.

Program

A program or degree refers to the overall qualification you receive upon graduation, for example, Master of Architecture. A program is made up of multiple courses you will need to complete to satisfy your program requirements.

Program Advisor

These advisors have detailed knowledge about the requirements of our degrees, and can assist with advice on credit, help manage enrolment and degree progression, and determine if you have successfully met the requirements to graduate.

Program Convenor

The academic who has overall responsibility for the management and quality of one or more University degrees.

Unique Student Identifier (USI)

A USI is your individual education identifier which creates an online record of your training attainments in Australia. You will need a USI to receive commonwealth financial assistance such as FEE-HELP, as well as to obtain your qualification or statement of attainment. A USI is for life, you create it once and there is no cost involved.

Postgraduate degrees

Click or scan to visit our website for all of our postgraduate degrees



	Intakes	Location	Duration	Mode of delivery	Program code	2023 Indicative annual fee*
Architecture, Building and Construction						
Graduate Certificate in Disaster Risk Reduction	T1, T2, T3	N, Online	0.5 yrs FT/ 3 yrs PT	Mixed mode	40019	\$16,935
Graduate Certificate in Project Management	T1, T2, T3	Online	0.5 yrs FT/ 3 yrs PT	Online	40337	\$15,390
This degree provides you with specialised project management and leadership skills that are highly valued and in demand across industries including property development, construction, mining, utilities, information technology and business sectors. Learn project management methodologies and technologies from expert industry practitioners, and then apply these skills to real-world and project-based coursework. We have worked with industry to ensure that the skills you learn will be immediately applicable in your career, increasing your value in the labour market.						
Master of Architecture^{^1}	S1, S2	N	2 yrs FT/ 6 yrs PT	Face-to-face	12060	\$33,870
Architecture at the University of Newcastle is different. Our program is grounded and future-focused, shaping students who care for country, who are motivated by social and ecological issues, and who explore their potential as agents for change.						
Master of Disaster Resilience and Sustainable Development	T1, T2, T3	N, Online	2 yrs FT/ 6 yrs PT	Mixed mode	40115	\$29,675
The Master of Disaster Resilience and Sustainable Development is delivered through CIFAL Newcastle, a United Nations training centre with a focus on disaster resilience and sustainable development. This degree equips people from diverse backgrounds to understand resilience and sustainable development principles, and systematically apply them to avoid disasters, operate through extreme events and emerge better placed to face the future.						
Business and Management						
Executive Master of Business Administration (EMBA)	T1, S2	NC	1 yr FT	Face-to-face	40214	\$41,630
The Executive MBA is a practice-oriented graduate business degree, designed for experienced employees wishing to learn alongside like-minded people to advance leadership, business and management skills. You will typically be a team leader or a mid to high-level manager seeking to broaden your knowledge base and skill sets and take your career to the next level. Delivered in an intensive 'block' study mode, you will be able to work and study to complete your Executive MBA in one year.						
Graduate Certificate in Applied Finance	T1, T2, T3	NC	0.5 yrs FT/ 3 yrs PT	Face-to-face	11198	\$12,945
Graduate Certificate in Business Administration	T1, T2, T3	NC, S, Online	0.5 yrs FT/ 3 yrs PT	Mixed mode	40142	\$13,055
Graduate Certificate in Digital Business	T1, T2, T3	Online	0.5 yrs FT/ 3 yrs PT	Online	40338	\$12,875
The Graduate Certificate in Digital Business focuses on contemporary issues in operating effective digital business, preparing students with the latest knowledge of digital technologies and their impacts. The program offers to equip students with digital business leadership skills so that they can act as smart business decision makers, inventors, and enablers to different digital transformation for improving business or merchandising processes.						
Graduate Certificate in Health Economics, Management and Policy	T1, T2, T3	NC	0.5 yrs FT/ 3 yrs PT	Mixed mode	40219	\$13,065
Graduate Certificate in Human Resource Management	T1, T2, T3	NC, Online	0.5 yrs FT/ 3 yrs PT	Mixed mode	40134	\$12,945

Key and notes

^{^1} CSP

^{^2} Sydney CBD campus only

^{^3} Newcastle City campus

T1 - Trimester 1

T2 - Trimester 2

T3 - Trimester 3

S1 - Semester 1

S2 - Semester 2

W - Winter

N - Newcastle Callaghan

NC - Newcastle City

CC - Central Coast

S - Sydney

FT - Full-time

PT - Part-time

Note: Part-time duration is the maximum amount of time to complete the degree.

*2022 indicative fee only. Fees are subject to change. Graduate Certificates are based on 40 units and Graduate Diplomas and Masters are based on 80 units annually. Please check the length of your program, as some degrees vary. Please visit our website for the most up-to-date information.

Click or scan to visit our website for all of our postgraduate degrees



	Intakes	Location	Duration	Mode of delivery	Program code	2023 Indicative annual fee*
Business and Management						
Graduate Certificate in Marketing	T1, T2, T3	NC, Online	0.5 yrs FT/ 3 yrs PT	Mixed mode	40136	\$12,945
Graduate Certificate in Professional Accounting	T1, T2, T3	S	0.5 yrs FT/ 3 yrs PT	Face-to-face	12187	\$13,840
	S1, S2	N, Online	1 yrs FT/ 3 yrs PT	Face-to-face	40428	\$10,305
Graduate Certificate in Professional Equity and Inclusion	If you are passionate about social justice and equity, if you wish to pursue a career working as an advocate for rights-based issues, or if you wish to gain greater knowledge and expertise for how to address matters related to equity, inclusion and diversity within your current organisation, then the Graduate Certificate in Professional Equity and Inclusion is a degree for you. All organisations and workplaces require attention to equity and diversity concerns. This degree will build your capacity for conceptualising, strategising, implementing and evaluating equity, diversity and inclusion initiatives.					
Master of Applied Finance	T1, T2, T3	NC	1.5 yrs FT/ 6 yrs PT	Face-to-face	12374	\$25,925
Master of Business Administration (Global)	T1, T2, T3	NC	2 yrs FT	Face-to-face	40160	\$25,890
Master of Business Administration (MBA)	T1, T2, T3	NC, S, Online	1.5 yrs FT/ 5 yrs PT	Mixed mode	40137	\$26,220
	Outstanding business leadership meets you when you graduate with the Master of Business Administration (MBA) from the University of Newcastle. With brand new on-campus facilities, or an all-inclusive online program guided by business leaders and academics, the MBA is designed to challenge you and build your capacity for business excellence.					
Master of Health Economics, Management and Policy	T1, T2, T3	NC, Online	1.5 yrs FT/ 5 yrs PT	Mixed mode	40259	\$25,190
	The Master of Health Economics, Management and Policy offers a practical toolkit for healthcare sector leaders, policy makers and analysts. It provides a mixed-skills portfolio comprising of leadership and management capabilities with analytical and conceptual knowledge.					
Master of Health Economics, Management and Policy (Global)	T1, T2, T3	NC	2 yrs FT/ 6 yrs PT	Face-to-face	40261	\$25,080
Master of Human Resource Management	T1, T2 ³ , T3	NC, Online	1.5 yrs FT/ 5 yrs PT	Mixed mode	40133	\$25,930
	The Master of Human Resource Management teaches students the skills and knowledge to manage people within an organisation to be efficient and effective in their approach to work, which is fundamental to all business activity. This program empowers students to apply their knowledge within complex organisational environments to develop and lead high-performing teams and workforces.					
Master of International Business	T1, T2, T3	NC	1.5 yrs FT/ 6 yrs PT	Face-to-face	12384	\$25,890
Master of Marketing	T1, T2 ³ , T3	NC, Online	1.5 yrs FT/ 5 yrs PT	Mixed mode	40135	\$25,890
Master of Professional Accounting	T1, T2, T3	S	1.5 yrs FT/ 5 yrs PT	Face-to-face	11702	\$27,680
Master of Professional Accounting (Advanced)	T1, T2, T3	S	2 yrs FT/ 6 yrs PT	Face-to-face	12403	\$27,485
Master of Business Administration (Global)/Master of Science (Data Analytics)	T1, T2, T3	N	2 years FT/ 6 years PT	Face-to-face	40218	\$25,025

Mixed mode allows students to mix and match course delivery within a program/degree. Students can choose between online and face-to-face and between campuses. Refer to the program handbook to see the locations listed for each course. Degree information above is correct as at 26/07/2022. Please refer to our website for the most up-to-date information.

*2022 indicative fee only. Fees are subject to change. Graduate Certificates are based on 40 units and Graduate Diplomas and Masters are based on 80 units annually. Please check the length of your program, as some degrees vary. Please visit our website for the most up-to-date information.

Postgraduate degrees

Click or scan to visit our website for all of our postgraduate degrees



	Intakes	Location	Duration	Mode of delivery	Program code	2023 Indicative annual fee*
Business and Management						
Master of Business Administration/ Master of Applied Finance	T1, T2, T3	NC	2 yrs FT/ 6 yrs PT	Face-to-face	40145	\$25,910
Master of Business Administration/ Master of Human Resource Management	T1, T2, T3	NC, Online	2 yrs FT/ 6 yrs PT	Mixed mode	40146	\$26,000
Master of Business Administration/ Master of International Business	T1, T2, T3	NC	2 yrs FT/ 6 yrs PT	Face-to-face	40147	\$25,915
Master of Business Administration/ Master of Marketing	T1, T2, T3	NC, Online	2 yrs FT/ 6 yrs PT	Mixed mode	40148	\$25,985
Master of Health Economics, Management and Policy/Master of Business Administration	T1, T2, T3	NC, Online	2 yrs FT/ 6 yrs PT	Mixed mode	40260	\$25,315
Master of Professional Accounting/ Master of Business Administration	T1, T2, T3	S	2 yrs FT/ 6 yrs PT	Face-to-face	40164	\$27,120
Computing, Maths and Technology						
Graduate Certificate in Cyber Security	S1, S2	N, Online	1 yr FT/ 3 yrs PT	Mixed mode	40196	\$16,180
Graduate Certificate in Data Analytics	S1, T2, S2	Online	1 yr FT/ 3 yrs PT	Online	40155	\$11,545
Graduate Certificate in Data Science	S1, S2, T3	Online	1 yr FT/ 3 yrs PT	Online	40162	\$11,545
Graduate Certificate in Information Technology	T1, T3	N, S, Online	0.5 yrs FT/ 3 yrs PT	Mixed mode	12381	\$14,245
Master of Cyber Security	S1, S2	N	2 yrs FT/ 6 yrs PT	Face-to-face	40180	\$31,200
	The Master of Cyber Security has been designed to provide you with quality training which will enable you to become a cyber security professional. You will gain extensive knowledge in cyber systems and infrastructures, their applications and legal aspects of cyber security which will provide you with the skills to address severe skill shortages in these areas globally.					
Master of Data Science	S1, S2	Online	1.5 yrs FT/ 5 yrs PT	Online	40112	\$26,545
	A Master of Data Science from the University of Newcastle will equip you with the essential specialised skills and knowledge required to understand and engage with a variety of data generated from diverse industries and settings. This professional and industry oriented program will enable you to apply your theoretical statistical and computational knowledge to better understand and explore data.					
Master of Information Technology (MIT)	T1, T3	N, S, Online	2 yrs FT/ 6 yrs PT	Mixed mode	40177	\$26,615

Key and notes

*1 CSP

*2 Sydney CBD campus only

*3 Newcastle City campus

T1 - Trimester 1
T2 - Trimester 2
T3 - Trimester 3

S1 - Semester 1
S2 - Semester 2
W - Winter

N - Newcastle Callaghan
NC - Newcastle City
CC - Central Coast
S - Sydney

FT - Full-time
PT - Part-time

Note: Part-time duration is the maximum amount of time to complete the degree.

*2022 indicative fee only. Fees are subject to change. Graduate Certificates are based on 40 units and Graduate Diplomas and Masters are based on 80 units annually. Please check the length of your program, as some degrees vary. Please visit our website for the most up-to-date information.

Postgraduate degrees

Click or scan to visit our website for all of our postgraduate degrees



	Intakes	Location	Duration	Mode of delivery	Program code	2023 Indicative annual fee*
Education						
Graduate Certificate in Early Childhood Disability Support	S1, S2	Online	0.5 yrs FT/ 3 yrs PT	Online	40267	\$10,305
Graduate Certificate in Education	S1, S2	N, Online	0.5 yrs FT/ 3 yrs PT	Mixed mode	40139	\$10,305
Graduate Certificate in Emotional and Behavioural Support in Education	S1, S2	N	0.5 yrs FT/ 3 yrs PT	Online	40324	\$10,305
Graduate Certificate in Special and Inclusive Support	S1, S2	Online	0.5 yrs FT/ 3 yrs PT	Online	40268	\$10,305
Graduate Certificate in Transformational Leadership in Education	S1, S2	Online	0.5 yrs FT/ 3 yrs PT	Online	40269	\$10,305
Master of Education	S1, S2	N, Online	1 yr FT/ 4 yrs PT	Mixed mode	40138	\$21,080
	S1, S2	N, Online	1 yr FT/ 4 yrs PT	Mixed mode	40013	\$20,610
Master of Leadership and Management in Education	If you love making a difference in the life of students, strive to see them get the most out of their learning experience and want to join a collaborative community of leaders, then the Master of Leadership and Management in Education is the program for you. This program will expand your leadership and management skills to guide people, education strategy and policy to improve the lives and learning of all students.					
Master of Special and Inclusive Education	S1, S2	N, Online	1 yr FT/ 4 yrs PT	Mixed mode	40123	\$20,610
	The program offers educators and other professionals working in inclusive education or disability sectors, the opportunity to develop specialised skills and advanced knowledge to support children and adolescents with additional needs. The program focuses your skills and builds your qualifications, knowledge and understanding to teach and support students in special or inclusive settings.					
Master of Teaching (Primary)	T1, T2	N	1.5 yrs FT/ 6 yrs PT	Face-to-face	40205	\$20,610
	If you are searching for a challenging and rewarding career that will utilise your communication and leadership skills to shape the future of children, then this degree is for you. Using your existing degree as a foundation, the Master of Teaching (Primary) offers you a highly-regarded advanced teaching program.					
Master of Teaching (Secondary)	T1, T2	N	1.5 yrs FT/ 6 yrs PT	Face-to-face	40204	\$20,610
	If you are searching for a rewarding career that will use your communication and leadership skills to shape the future of Australia's students, then the Master of Teaching (Secondary) is for you. Using your existing degree as a foundation, this degree offers a highly-regarded teaching program.					

Mixed mode allows students to mix and match course delivery within a program/degree. Students can choose between online and face-to-face and between campuses. Refer to the program handbook to see the locations listed for each course. Degree information above is correct as at 26/07/2022. Please refer to our website for the most up-to-date information.

*2022 indicative fee only. Fees are subject to change. Graduate Certificates are based on 40 units and Graduate Diplomas and Masters are based on 80 units annually. Please check the length of your program, as some degrees vary. Please visit our website for the most up-to-date information.

Postgraduate degrees

Click or scan to visit our website for all of our postgraduate degrees



	Intakes	Location	Duration	Mode of delivery	Program code	2023 Indicative annual fee*
Engineering						
Master of Materials Science and Engineering	S1, S2	N	2 yrs FT/ 6 yrs PT	Face-to-face	40203	\$33,095
Master of Professional Engineering (Civil)	S1, S2	N	1-3 yrs FT/ 8 yrs PT	Face-to-face	40183	\$32,110
Master of Professional Engineering (Electrical and Electronic)	S1, S2	N	1-3 yrs FT/ 8 yrs PT	Face-to-face	40184	\$33,090
Master of Professional Engineering (Geospatial Engineering and Surveying)	S1, S2	N	1-2 yrs FT/ 6 yrs PT	Face-to-face	40052	\$30,690
Master of Professional Engineering (Mechanical)	S1, S2	N	1-3 yrs FT/ 8 yrs PT	Face-to-face	40185	\$32,810
Health and Medicine						
Graduate Certificate in Clinical Epidemiology	S1, S2	N, Online	0.5 yrs FT/ 3 yrs PT	Mixed mode	11684	\$10,295
	T1, S1, T2, T3	Online	1 yr PT	Online	40300	\$9,080
Graduate Certificate in Custodial Health	Study a Graduate Certificate in Custodial Health and gain advanced specialist knowledge and skills, advanced research skills training, and education about contemporary issues and interventions. This program will place you in the optimum position to improve the delivery of clinical care for patients. Offering foundational education in specialist custodial and secure setting healthcare, this program will enable you to develop an understanding of the comorbid health conditions suffered by people in contact with the criminal justice system.					
Graduate Certificate in Health Science	S1, S2	Online	0.5 yrs FT/ 3 yrs PT	Online	11686	\$10,310
Graduate Certificate in Medicines for the Health Professions	T2	Online	0.5 yrs FT/ 3 yrs PT	Online	40303	\$13,455
Graduate Certificate in Midwifery (Re-Entry to Practice)	S1	N, CC	1 yr FT/ 3 yrs PT	Face-to-face	40314	\$8,625
Graduate Certificate in Public Health	S1, S2	Online	1 yr FT/ 3 yrs PT	Online	40284	\$10,325
Graduate Certificate in Workplace Health and Safety	S2	Online	1 yr FT/ 4 yrs PT	Online	12275	\$11,025
Graduate Diploma in Workplace Health and Safety	S1, S2	Online	1 yr FT/ 5yrs PT	Online	12274	\$21,225

Key and notes

*1 CSP

*2 Sydney CBD campus only

*3 Newcastle City campus

T1 - Trimester 1

T2 - Trimester 2

T3 - Trimester 3

S1 - Semester 1

S2 - Semester 2

W - Winter

N - Newcastle Callaghan

NC - Newcastle City

CC - Central Coast

S - Sydney

FT - Full-time

PT - Part-time

Note: Part-time duration is the maximum amount of time to complete the degree.

*2022 indicative fee only. Fees are subject to change. Graduate Certificates are based on 40 units and Graduate Diplomas and Masters are based on 80 units annually. Please check the length of your program, as some degrees vary. Please visit our website for the most up-to-date information.

Postgraduate degrees

Click or scan to visit our website for all of our postgraduate degrees



	Intakes	Location	Duration	Mode of delivery	Program code	2023 Indicative annual fee*
Health and Medicine						
Master of Clinical Epidemiology	S1, S2	N, Online	1 yr FT/ 4 yrs PT	Mixed mode	40030	\$20,570
The Master of Clinical Epidemiology focuses on health care research. You will learn how to conceptualise, design and carry out health care research applying epidemiologic methods, and to apply the best available research evidence to clinical practices and health care.						
Master of Clinical Medicine (Leadership and Management)	S1, S2	Online	2 yrs PT	Mixed mode	12263	\$22,190
The Master of Clinical Medicine (Leadership and Management) will provide you with an up-to-date education that blends clinical care, teamwork and environmental sustainability with principles of leadership and management. You will be prepared with the skills and knowledge to take on senior health leadership positions and inter-professional team leadership roles across a full range of health environments.						
Master of Custodial Health	T1, S1, T2, S2, T3	Online	1 yr FT/ 4 yrs PT	Online	40301	\$18,225
Gain advanced specialist knowledge and skills, advanced research skills training, and education about contemporary issues and interventions. Extending your secure and custodial healthcare education will place you in the optimum position to improve the delivery of clinical care for patients at an advanced practice level, delivering clinical practice based on new paradigms and recent evidence in contemporary health care. This program offers you the opportunity to tailor your studies to your specialist care of custodial health while underpinning your knowledge with a strong social justice philosophy.						
Master of Medical Statistics	S1, S2	Online	2 yrs PT	Online	40157	\$20,780
Master of Mental Health Nursing^{^1}	T1, T2, T3	Online	1 yr FT/ 4 yrs PT	Mixed mode	12197	\$18,305
The need for mental health nurses across all cultures and economies is escalating, and new models of care are being established to meet the specific needs of these people. Intended for Registered Nurses wishing to undertake a specialist qualification in Mental Health Nursing, this degree will help you develop the specialised skills and knowledge to advance your career in this challenging and rewarding area of healthcare.						
Master of Midwifery (Graduate Entry)	S1	N, CC	2 yr FT/ 6 yrs PT	Face-to-face	40313	\$17,705
Master of Nurse Practitioner	T1	Online	1 yr FT/ 4 yrs PT	Online	40158	\$21,315
Master of Nursing	T1, T2, T3	N, Online	1 yr FT/ 4 yrs PT	Mixed mode	40156	\$19,620
The Master of Nursing will advance your knowledge to progress your career. Through selecting a specialisation, you may strengthen your skills in professional leadership, clinical education, health care improvement, research, and evidence-based practice. You will have the opportunity to further develop your individual areas of interest whilst exploring and learning to adapt to the challenging and constantly changing landscape of professional nursing.						
Master of Public Health	S1, S2	N, Online	1 yr FT/ 4 yrs PT	Mixed mode	11716	\$21,765
The Master of Public Health is a flexible degree designed to give you a broad introduction to public health and to provide the skills and knowledge to define, critically assess and resolve public health issues within a community, whilst catering for your individual career goals.						

Mixed mode allows students to mix and match course delivery within a program/degree. Students can choose between online and face-to-face and between campuses. Refer to the program handbook to see the locations listed for each course. Degree information above is correct as at 26/07/2022. Please refer to our website for the most up-to-date information.

*2022 indicative fee only. Fees are subject to change. Graduate Certificates are based on 40 units and Graduate Diplomas and Masters are based on 80 units annually. Please check the length of your program, as some degrees vary. Please visit our website for the most up-to-date information.

Postgraduate degrees

Click or scan to visit our website for all of our postgraduate degrees



	Intakes	Location	Duration	Mode of delivery	Program code	2023 Indicative annual fee*
Health and Medicine						
Master of Traumatology	S1, S2	Online	1 yr FT/ 4 yrs PT	Online	12392	\$36,305
The Master of Traumatology has been designed in response to the increasing demand for trauma specialised medical professionals. Aimed at medical practitioners, nurses, allied health professionals, and pre-hospital paramedics wanting to take the next step in their career, this program will equip you with specialised practical skills that will enable you to accelerate improvement in injured patients.						
Humanities and Social Sciences						
Graduate Certificate in Social Change and Development	S1, S2	N, Online	0.5 yrs FT/ 3 yrs PT	Mixed mode	12376	\$10,305
Master of Social Change and Development	S1, S2	N, Online	1.5 yrs FT/ 5 yrs PT	Mixed mode	40015	\$22,650
Master of Translation Studies	S1	N, Online	1 yr FT/ 4 yrs PT	Mixed mode	40229	\$24,690
Law						
Juris Doctor/Graduate Diploma in Legal Practice	T1, W	NC	3 yrs FT	Face-to-face	12334	\$27,520
Designed for university graduates, Newcastle Law School's Juris Doctor (JD) and the embedded Graduate Diploma in Legal Practice (GDLP) will not only open doors to employment as a lawyer, it will provide you with professional skills and attributes that are in high demand in other industries and professions.						
Master of Dispute Resolution	S1, S2	NC	1 yr FT/ 4 yrs PT	Face-to-face	40193	\$27,520
Master of Environmental Law	T1, S1, T2, W, S2, T3	NC	1 yr FT/ 4 yrs PT	Face-to-face	40141	\$27,520
Master of Human Resources and Law	T1, S1, T2, S2, T3	Online	1 yr FT/ 4 yrs PT	Online	40140	\$26,795
Master of Laws (LLM)	S1, W, S2	NC	1 yr FT/ 4 yrs PT	Face-to-face	12333	\$27,505

Key and notes

*1 CSP

*2 Sydney CBD campus only

*3 Newcastle City campus

T1 - Trimester 1

T2 - Trimester 2

T3 - Trimester 3

S1 - Semester 1

S2 - Semester 2

W - Winter

N - Newcastle Callaghan

NC - Newcastle City

CC - Central Coast

S - Sydney

FT - Full-time

PT - Part-time

Note: Part-time duration is the maximum amount of time to complete the degree.

*2022 indicative fee only. Fees are subject to change. Graduate Certificates are based on 40 units and Graduate Diplomas and Masters are based on 80 units annually. Please check the length of your program, as some degrees vary. Please visit our website for the most up-to-date information.

Postgraduate degrees

Click or scan to visit our website for all of our postgraduate degrees



	Intakes	Location	Duration	Mode of delivery	Program code	2023 Indicative annual fee*
Science and the Environment						
Graduate Certificate in Environmental and Business Management	T1, T2, T3	Online	0.5 yrs FT/ 3 yrs PT	Online	12326	\$12,125
Graduate Certificate in Environmental Management and Sustainability	T1, T2, T3	Online	0.5 yrs FT/ 3 yrs PT	Online	12327	\$11,295
Graduate Certificate in Spatial Science	T1, S1, S2, T3	Online	1 yr PT	Online	40273	\$10,840
A Graduate Certificate in Spatial Science from the University of Newcastle will equip you with the practical and critical problem-solving skills necessary for understanding and applying Spatial Science technologies. Spatial Science underscores almost every aspect of modern life, from monitoring and managing natural hazards through to urban planning.						
Graduate Diploma in Exercise and Chronic Disease Management	S1	CC	1 yr FT/ 4 yrs PT	Face-to-face	40244	\$21,125
Graduate Diploma in Psychological Science	S1	N, CC	1 yr FT/ 4 yrs PT	Mixed mode	40223	\$31,360
The program provides an alternative pathway into the field of Psychology, as it allows graduates of an undergraduate degree (or higher-level qualification) in any discipline, to develop skills in the discipline of Psychology and achieve a bachelor's-degree equivalent in Psychology.						
Graduate Diploma in Spatial Science	T1, S1, S2, T3	Online	1 yr FT/ 4 yrs PT	Online	40274	\$23,675
Master of Business Psychology	T1, S1, T2, S2, T3	Online	2 yrs FT/ 6 yrs PT	Online	12394	\$29,330
The Master of Business Psychology is designed for graduates from a variety of disciplines seeking to advance their leadership and management skills from a psychological perspective to enhance performance and wellbeing across workplace contexts.						
Master of Clinical Psychology²	S1	N	2 yrs FT/ 6 yrs PT	Face-to-face	40187	\$31,360
The Master of Clinical Psychology is a professional qualification for those who wish to practice as a Clinical Psychologist. With expert supervision in our Psychology clinic and local health care and community settings, the course will give you the skills to work in the prevention, diagnosis, and treatment of a wide range of psychological disorders.						
Master of Environmental Management and Sustainability	T1, S1, T2, S2, T3	Online	2 yrs FT/ 6 yrs PT	Online	40275	\$24,210
Designed to engage with the broad issues that contemporary societies face in today's climate, the Master of Environmental Management and Sustainability integrates theory and practice with interdisciplinary grounding in sustainable policy development and policy implementation, environmental management and impact assessment.						

Mixed mode allows students to mix and match course delivery within a program/degree. Students can choose between online and face-to-face and between campuses. Refer to the program handbook to see the locations listed for each course. Degree information above is correct as at 26/07/2022. Please refer to our website for the most up-to-date information.

*2022 indicative fee only. Fees are subject to change. Graduate Certificates are based on 40 units and Graduate Diplomas and Masters are based on 80 units annually. Please check the length of your program, as some degrees vary. Please visit our website for the most up-to-date information.

Postgraduate degrees

Click or scan to visit our website for all of our postgraduate degrees



	Intakes	Location	Duration	Mode of delivery	Program code	2023 Indicative annual fee*
Science and the Environment						
	S1	CC	2 yrs FT/ 6 yrs PT	Face-to-face	40243	\$20,595
Master of Exercise Physiology	The demand for Accredited Exercise Physiologists in a variety of health environments is expanding rapidly. The Master of Exercise Physiology at the University of Newcastle is a unique, advanced and contemporary allied health program which aims to bring critical thinking and appraisal of evidence in exercise physiology and health practice to the forefront.					
	S1	N	1 yr FT/ 4 yrs PT	Face-to-face	40117	\$31,360
Master of Professional Psychology²	The Master of Professional Psychology is a professional qualification for those who wish to practice as a Registered Psychologist. Through intensive psychological training and education, graduates will be skilled in applying advanced psychological learnings competently and ethically across a broad range of professional settings.					

Key and notes

¹ CSP

² Sydney CBD campus only

³ Newcastle City campus

T1 - Trimester 1

T2 - Trimester 2

T3 - Trimester 3

S1 - Semester 1

S2 - Semester 2

W - Winter

N - Newcastle Callaghan

NC - Newcastle City

CC - Central Coast

S - Sydney

FT - Full-time

PT - Part-time

Note: Part-time duration is the maximum amount of time to complete the degree.

Mixed mode allows students to mix and match course delivery within a program/degree. Students can choose between online and face-to-face and between campuses. Refer to the program handbook to see the locations listed for each course. Degree information above is correct as at 26/07/2022. Please refer to our website for the most up-to-date information.

*2022 indicative fee only. Fees are subject to change. Graduate Certificates are based on 40 units and Graduate Diplomas and Masters are based on 80 units annually. Please check the length of your program, as some degrees vary. Please visit our website for the most up-to-date information.

Key dates 2023

	Application closing dates	Commences	Recess	Concludes	Exam period
Trimester 1	8 January	23 January		14 April	17 April - 21 April
Semester 1	5 February	20 February	7 April - 21 April	2 June	5 June - 17 June
Trimester 2	23 April	8 May		28 July	31 July - 4 August
Winter	28 May	12 June		7 July	10 July - 14 July
Semester 2	2 July	17 July	25 September - 6 October	27 October	30 October - 11 November
Trimester 3	6 August	21 August		10 November	13 November - 17 November

Note: All dates are subject to change. Please visit our website for the most up-to-date information.

Engage with expert educators

Professor Rhonda Wilson

School of Nursing and Midwifery

Professor Rhonda Wilson is a Wiradjuri woman, experienced credentialed mental health nurse and an internationally recognised mental health nursing scientist. Her work in e-health is paving the way for new digital therapeutic interventions that promote and support person-centred care and increased wellbeing.

“My work seeks to harness the digital technologies available and apply them to solving mental health problems for a wide range of people with diverse experiences and needs to help them to participate fully in life, with self-determination, meaning and purpose.”

She is currently leading a Digital Mental Health Laboratory based at Central Coast Clinical School: Ecowell – an incubator for digital mental health and social emotional wellbeing digital innovation.

Rhonda is also contributing to better mental health care through her roles as scientific assessor for NHMRC and the European Research Council, as well as multiple global affiliate roles that mean she is always at the forefront of new innovations.

Rhonda has published nursing textbooks in English and Danish, is one of the authors of an Aboriginal nursing textbook written entirely by First Nations authors and has recently contributed to a ‘Call to Action’ publication led by Dr Lynore Geia designed to dismantle racism in health and education institutions.

Rhonda has made a significant contribution to both the nursing and mental health fields during her three-decade career in Australia, New Zealand and Denmark. With so many accolades and titles under her belt, the future of mental health care and research is in very good hands.



Read more about Rhonda here

Assoc. Professor Scott Imig

School of Education

Scott Imig is an Associate Professor and the co-convenor for the Master of Leadership and Management in Education Degree (MLMED) at the University of Newcastle. In this role, Scott is focused on the preparation of the region's and the nation's next generation of school leaders. The leadership program Scott and his colleagues have developed is world-leading with its focus on blending high-quality research and relevant school-based assignments. A recognised leader in the fields of coaching and developmental supervision, Scott brings his people-centred approach to his teaching.

Scott's research is primarily focused on the preparation and support of school leaders and teachers to meet the needs of all students. He has led dozens of national and international studies looking at the characteristics of quality educator preparation programs. Scott's current research is investigating the ways teachers and principals create welcoming, safe and productive school environments for children and families with refugee and asylum-seeker backgrounds. Scott and his colleagues have published their findings in multiple articles and two

books. In 2021, Routledge published *Creating Spaces of Wellbeing and Belonging for Refugee and Asylum-Seeker Students: Skills and Strategies for School Leaders*. The team's second book, *Creating Spaces of Learning and Safety for Students with Refugee and Asylum Seeker Experiences: Skills and Strategies for Classroom Teachers*, will be released in late 2022.

Scott is heavily engaged in supporting educators across Australia. He works closely with teachers, principals and directors of educational learning and conducts workshops on coaching and leadership across the region. In 2020, he was named a Carnegie Visiting Fellow in recognition of his approach to educational improvement.



Read more about Scott here



newcastle.edu.au/postgrad



1800 882 121



University of Newcastle



Newcastle Campus

Callaghan

University Drive,
Callaghan NSW 2308

Newcastle City Campuses

NUspace

Corner Hunter and
Auckland Streets,
Newcastle NSW 2300

Q Building

Corner of Honeysuckle Drive
and Worth Place,
Newcastle NSW 2300

Central Coast Campuses

Ourimbah

Chittaway Road,
Ourimbah NSW 2258

Gosford

Holden Street,
Gosford NSW 2250

Sydney Campus

55 Elizabeth Street,
Sydney NSW 2000

