

ENGLISH LANGUAGE PATHWAYS



THE UNIVERSITY OF
NEWCASTLE
AUSTRALIA

English Language courses,
study abroad and study tours
for overseas institutions

OUR CENTRE

The University of Newcastle Pathways and Academic Learning Support Centre specialises in teaching English to students from all over the world.

We offer a wide range of intensive English language programs designed to help students achieve their goal of studying with the University of Newcastle, as well as providing opportunities to engage with the wider Newcastle community as part of our award-winning Student Experience Program.

OUR ENGLISH LANGUAGE CENTRE RANKS IN THE



**Voted
1ST**

for overall satisfaction



**No.
7**

in Australia for learning¹



**No.
2**

for Language Centre recommendation

¹Australian English Language Barometer 2022



To learn more about our offerings, visit our [English Language Bridging Program \(ELBP\)](#) page.



ABOUT OUR ENGLISH LANGUAGE PATHWAYS

The University of Newcastle's Pathways and Academic Learning Support Centre (PALS) has offered our English Language Bridging Program (ELBP) (formerly ELICOS) since 1989, establishing a reputation for excellence in English language education.

Located in Newcastle, PALS delivers ELBP for academic and general purposes, and offers a range of integrated and tailored short-term and Study Tour programs as well as ELBP for Study Abroad.

Each year, around 800 students from over 30 countries study English language pathways with PALS. We provide a friendly, supportive, and culturally diverse atmosphere as part of the wider University of Newcastle environment. Courses are taught by highly qualified and experienced English language teachers.

Our staff are led by Pathways and Academic Learning and Support Centre Director, Dr. Anna Bennett. Our English language pathways are a member of University English Centres Australia (UECA), and English Australia. Our programs are accredited by the National ELT Accreditation Scheme (NEAS).

AWARD-WINNING



Winner in student engagement -
2019 English Australia Award for Innovation¹



NEAS Quality Endorsed Centre²

¹2019 English Australia Award for Innovation

²Global leader in Quality Assurance for English Language Teaching Community

WHAT WE OFFER

- **English Language Bridging Program (ELBP):** Your English language pathway to the University of Newcastle. Offering academic and general English language training for students who have narrowly missed the English language requirements of their degree program with the University of Newcastle.
- **Study Abroad:** Study Abroad can be packaged with our ELBP for students looking to improve their English prior to commencing. Experience an authentic Australian adventure while you study with the University of Newcastle over one to two semesters, taking three to four courses each semester.
- **Tailored or Integrated Short-term English:** English programs for individuals and groups looking to improve their English language proficiency.
- **Student Experience Program:** Offered to students enrolled in all English Language Pathways programs. Our SEP includes volunteering/work experience opportunities, excursions, and a range of dynamic and engaging activities including Speed Conversations, Pronunciation Workshops and Ready To Talk.



BENEFITS OF STUDYING ENGLISH WITH THE UNIVERSITY OF NEWCASTLE



Experienced and innovative teachers



Student-centred learning



Award-winning Student Experience Program

- Successful completion of ELBP enables direct entry to University of Newcastle degree programs and prepares students for success in their future studies. The ELBP is also a pathway into University College of International Education (UNCIE) programs.
- PALS has been delivering English language courses for over 30 years. Our experienced and innovative teachers facilitate engaging and rewarding lessons with a student-centred approach to English language education.
- High quality ELBP curriculum with classes designed to help students successfully transition to tertiary study with the University of Newcastle, prepare for the global workforce, and increase their English proficiency for a range of personal and professional goals.
- The University of Newcastle is proud of its international student body and offers a wide range of services to support their student journey.
- Located in Newcastle with convenient access to the University's student facilities and services.
- Ability to practice your English with Australian students through our award-winning Student Experience Program.
- The University of Newcastle offers a range of on-campus and off-campus accommodation, including homestay.

THE UNIVERSITY OF NEWCASTLE RANKS IN THE



**RANKED
175**

in the world¹



**TOP
50**

in the Asia-Pacific Region¹

¹QS World University Rankings 2024

OUR LOCATION AND FACILITIES



Modern classrooms designed to facilitate a student-centred and blended approach to learning.



Campus wide WIFI and free access to a range of student systems and software.



Access to the University library, including dedicated resources and experienced staff committed to increasing the digital literacy of international students.

OUR CENTRAL LOCATION

Our Language Centre on the University's main campus (Callaghan) in Newcastle is a modern building, conveniently located in the centre of the campus adjacent to the University's library and the student services centre.

The beautiful city of Newcastle is known for its spectacular coastline, its contemporary culture and enviable lifestyle. National Geographic has named Newcastle as one of the world's 7 Smart Cities that have risen to the challenges of 21st century urban life.



Newcastle (Callaghan) campus



NEWCASTLE CITY CAMPUS

Located on the corner of Auckland Street and King Street, our City campus is right in the heart of Newcastle's CBD. The City campus consists of NUspace, The Conservatorium of Music, University House, Northumberland House, Newcastle Legal Centre and the Q Building.

ELBP

Our English Language Bridging Program (ELBP) is designed to enable international students to develop their English language and academic literacy skills for a variety of purposes.

ELBP will help you to improve your English language proficiency, enabling you to meet the minimum entry requirements for your degree program at the university. Throughout your study in the English language pathway, you will also develop your academic skills which will set you up for success in your destination program at the university. You can also study ELBP to improve your English skills for your global career.

ELBP COURSES AND LEVELS

- Intermediate
- Upper Intermediate
- Advanced (EAP)

Each level consists of 10 weeks of study.

STUDY HOURS

The University of Newcastle Language Centre offers 20 hours of class per week.

Students are expected to attend classes for 4 hours each weekday.



15 students
per class on average



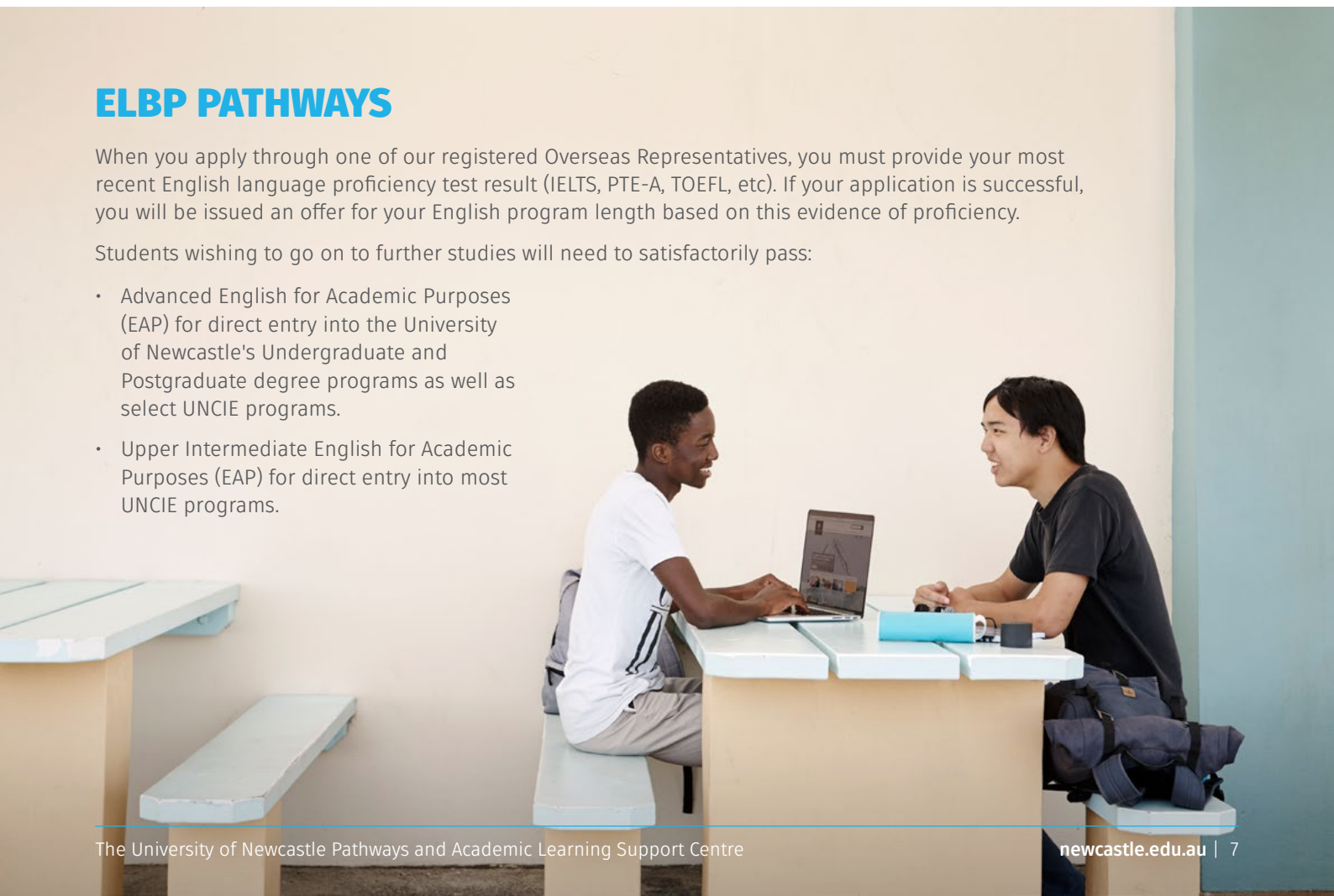
20 hours
per week face-to-face

ELBP PATHWAYS

When you apply through one of our registered Overseas Representatives, you must provide your most recent English language proficiency test result (IELTS, PTE-A, TOEFL, etc). If your application is successful, you will be issued an offer for your English program length based on this evidence of proficiency.

Students wishing to go on to further studies will need to satisfactorily pass:

- Advanced English for Academic Purposes (EAP) for direct entry into the University of Newcastle's Undergraduate and Postgraduate degree programs as well as select UNCIE programs.
- Upper Intermediate English for Academic Purposes (EAP) for direct entry into most UNCIE programs.



ELBP FOR SUCCESS



MEET ENTRY REQUIREMENTS

Our ELBP courses are accepted by University of Newcastle and CIE for the purposes of direct entry; meet your English Language Proficiency Requirements onshore in Australia.



INNOVATIVE TEACHING

With experienced and innovative teachers, ELBP will deliver daily lessons and classes to students face to face at our Callaghan Campus throughout the year. All students receive access to a suite of FREE software and digital resources designed to facilitate engaging and interactive blended classrooms.



STUDENT EXPERIENCE

Our award-winning Student Experience Program is available face to face at our Callaghan Campus throughout the year for ELBP students. Each week, there will be a range of opportunities to interact and talk with University of Newcastle students and members of the local Newcastle community.



TIMETABLE

ELBP offers 20 hours of classes each week across four levels of proficiency. Classes run Monday to Friday between 9am-5pm.



FEES AND DATES

2024

Weekly course fee is **AU \$510**. Start your course from the following dates in 2024:

**8 January | 12 February | 18 March |
29 April | 3 June | 22 July | 26 August
| 8 October | 11 November**

One time enrolment fee: AU \$110

2025

Weekly course fee is **AU \$545**.

Start your course from any of the following dates in 2025:

**6 January | 10 February | 17 March |
28 April | 2 June | 21 July | 25 August
| 7 October | 10 November**

One time enrolment fee: AU \$125



SCHOLARSHIPS AVAILABLE

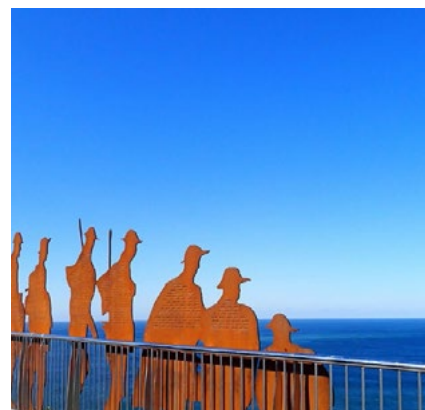
Scholarships are available. To check whether you are eligible, please contact languagecentre@newcastle.edu.au for more information.

SHORT-TERM INTEGRATED PROGRAMS

Our Short-term Integrated program caters for overseas students who are looking to learn English during their university summer or winter holidays. It allows individual students or groups to join our regular English Language Bridging classes for a minimum period of 4 weeks.

Short-term Integrated programs combine the benefits of an ELBP program and a Study Tour Program:

- Experience Study at the University of Newcastle and life in our city.
- Short-term Integrated students are enrolled as University of Newcastle students with access to all student services and facilities, including banking, library, health services, IT support, international student support, security shuttle bus, free internet and online services.
- Attendance and class participation are monitored for the purposes of a progress report
- Students join a class with classmates from all over the world.
- Enhance the global experience by participating in our Student Experience Program.
- There is no minimum requirement for the size of the group.
- Students will receive a certificate of completion at the end of the program.



TAILORED STUDY TOURS

Overseas institutions can customise a program to suit their budget and timeframe if they wish to send groups of students to the University of Newcastle for English language studies that incorporate cultural and tourism activities and homestay accommodation.

STUDENT EXPERIENCE PROGRAM

Our award-winning Student Experience Program is offered at our Callaghan campus. Each week, there will be a range of opportunities to interact and talk with University of Newcastle students and members of the local Newcastle community.



JOIN OUR GLOBAL COMMUNITY

Join our University community of over 35,000 students from over 105 countries. Engage with Australian and other international students and the local community to enhance your Australian experience and build strong relationships.



PRACTICE ENGLISH

Build your English skills outside the classroom by attending a:

- Pronunciation Class
- Speed Conversation Class
- Group or individual Speech Pathology session



ORIENTATION

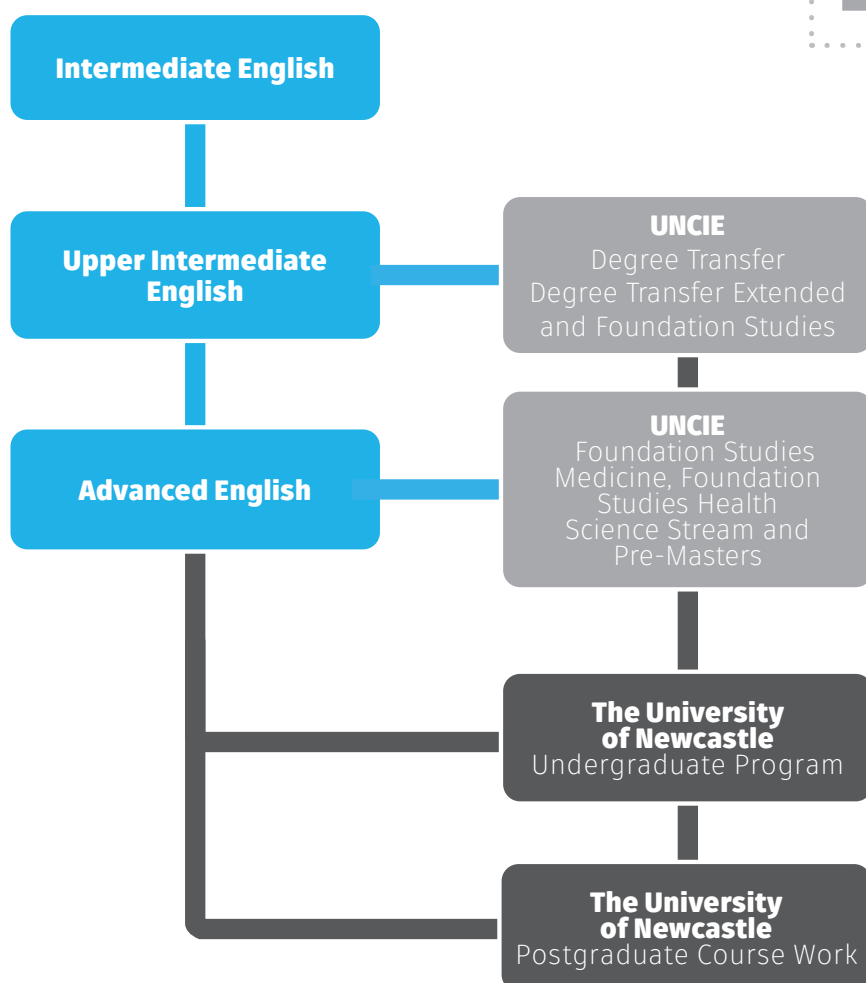
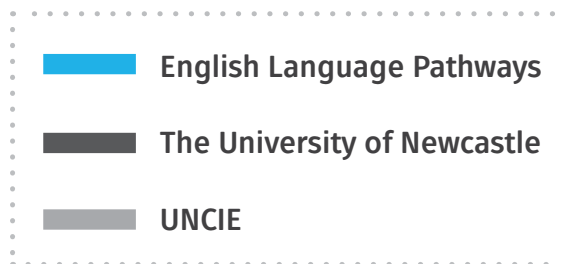
To help you settle in to your student life in Australia, we run a comprehensive orientation program to support you. Before you arrive, you will receive all of the information you need, and then once you are here, we will help you with dedicated orientation sessions to ensure you are able to settle in to life in Australia.



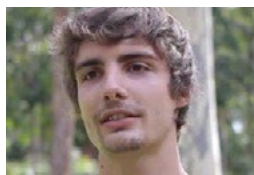
EXPLORE NEWCASTLE

Meet local Australian students and make friends through regular out-of-class activities at local Newcastle attractions, and see why Newcastle has been named as a Global Smart City.

PATHWAYS TO TERTIARY STUDY



STUDENT TESTIMONIALS



"Since I arrived in Newcastle my English speaking has improved a lot!"

Max - Luxembourg

"I chose to study at the University of Newcastle because it is one of the top Universities in the World"

Fernanda - Brazil



"I think the natural environment makes me enjoy the life more in Newcastle"

Annie - Korea

"I volunteer with Australians and they are really friendly"

Kanchanok - Thailand



"I felt supported. There is a strong inclusive and diversity throughout the centre. You meet different people from different regions"

Rena - China

"It has a multi-cultural environment that has a distinct impact on learning"

Rodrigo - Brazil



"My English has really improved since arriving in Newcastle, in fact now I feel confident communicating with people"

Thi Vanh Khuyen - Vietnam

"Through the program, I gained the confidence to use English to communicate with various people and take university courses"

Kaho - Japan



"It has prepared me strongly for my PhD stage, such as successfully sharpening my academic writing and presentation skills and managing multitasking"

Shrooq - Saudi Arabia

"The program also improved my speaking skills which is my weakness. Thanks to this program, I am growing in confidence"

Lanchakorn - Thailand



INTAKE DATES AND FEES

2024

COURSE DATES

8 January – 9 February

12 February – 15 March

18 March – 26 April

Easter Break: 29 March - 5 April

29 April – 31 May

3 June – 5 July

Course Break: 8 July - 19 July

22 July – 23 August

26 August – 27 September

Course Break: 30 September - 4 October

8 October – 8 November

11 November – 13 December

Course Break: 16 December 2024 - 3 January 2025

Classes resume: 6 January 2025

2025

COURSE DATES

6 January – 7 February

10 February – 14 March

17 March – 17 April

Easter Break: 18 April - 25 April

28 April – 30 May

2 June – 4 July

Course Break: 7 July - 18 July

21 July – 22 August

25 August – 26 September

Course Break: 29 September - 3 October

7 October – 7 November

10 November – 12 December

Course Break: 15 December 2025 - 2 January 2026

Classes resume: 5 January 2026

FEES

2024

\$510_{AUD}

ELBP WEEKLY TUITION FEE

One time enrolment fee of \$110 when you join the program.

2025

\$525_{AUD}

ELBP WEEKLY TUITION FEE

One time enrolment fee of \$125 when you join the program.

CENTRE CONTACT DETAILS



CALL

+61 2 4921 5376



EMAIL

language.centre@newcastle.edu.au

[NEWCASTLE.EDU.AU/ENGLISH-LANGUAGE-PATHWAYS](https://www.newcastle.edu.au/english-language-pathways)