

Grow with
our region



THE UNIVERSITY OF
NEWCASTLE
AUSTRALIA

INDUSTRY
— OPEN DAY —

CONSULTING WITH THE UNIVERSITY



INDUSTRY
— OPEN DAY —

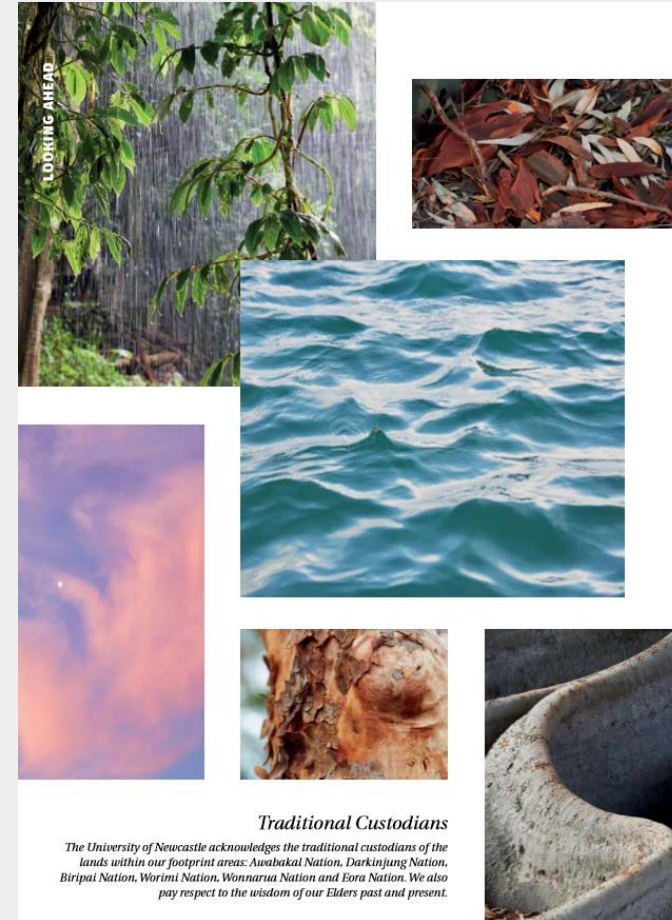
Grow with our region



***The University of Newcastle
acknowledges the traditional
custodians of the lands within our
footprint areas:***

***Awabakal,
Darkinjung, Biripai, Worimi, Wonnarua,
and Eora Nations.***

***We acknowledge Country itself, and
pay respect to the wisdom of our
Elders past, present and emerging.***



YOUR HOSTS



Amanda Wetzel
Director, Research Programs
Institute for Regional Futures



**INSTITUTE
FOR
REGIONAL
FUTURES**



Daniel Smith
Business Development
The Newcastle University
Research Associates
(TUNRA)



Grow with our region





TODAY

- Why consulting?
- Benefits of working with the University
- Our partnerships
- Q&A

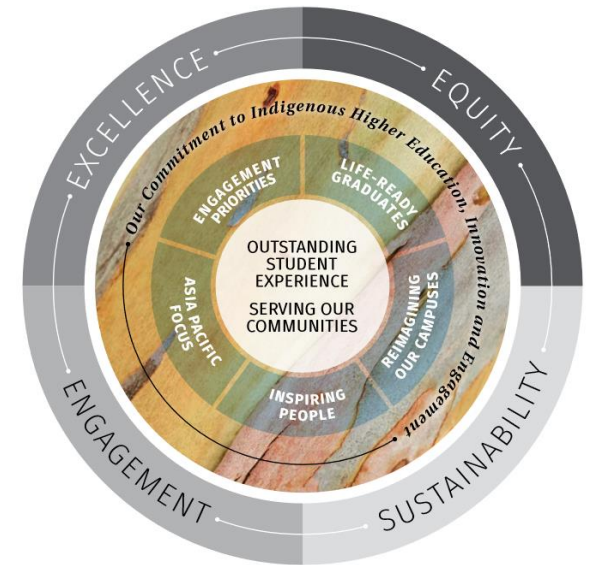
LOOKING AHEAD STRATEGIC PLAN 2020 – 2025

“To be a world leading university for our regions”

What does this mean for you?

Our focus is on:

- **Projects with Industry/Community Partners**
- **Multidisciplinary Transdisciplinary Collaboration**
- **Addressing the issues facing our community and region**



ENGAGEMENT PRIORITIES



BETTER, HEALTHIER LIVING

We will deliver better health outcomes and contribute to improving the wellbeing of our communities.



NEXT GENERATION RESOURCES

We will bring the world closer to a sustainable future with solutions for the use of natural resources and the development of new energy technologies.



CONNECTED COMMUNITIES

We will create a stronger, more inclusive society by collaborating with communities to build local capacity, social connectedness, and sense of belonging.



GROWING INDUSTRIES

We will harness our regions' innovative spirit and history of transformation to help grow our current industries and drive investment into future opportunities.

CONSULTING – MORE THAN JUST ADVICE

- ✓ **Enables access to a broad range of expertise and evidence to bring independent, high quality and innovative solutions to your organisation.**
- ✓ **Offers capacity building opportunities.**



BENEFITS OF WORKING WITH THE UNIVERSITY



100s of experts
across diverse fields



Highly reputable,
publicly accessible
institution



Creative and
innovative solutions
backed by research



Top 175 [Ⓢ]
university in the world



Top 200 [Ⓢ]
12 subjects ranked in the top
200 in the world



Top 8 [Ⓢ]
in Australia for research 'well
above world standard'



95% [Ⓢ]
of our research is 'at' or 'above
world standard'

HOW THE UNIVERSITY CAN HELP YOU

✓ Connect you to expertise



✓ Facilitate and conduct projects

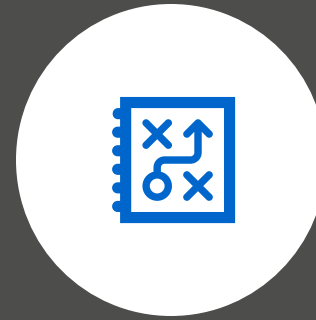


✓ Ensure high quality research

WHAT THE UNIVERSITY CAN DO



Contract Research



Consulting



Testing Services



**Short Courses and
Professional Training**

HOW THE UNIVERSITY ENGAGES

Established anchor institute with extensive stakeholder networks

Government, Industry,
and Community

- › *Fee for service research*
- › *Consultancy projects*
- › *Innovative solutions*
- › *Specialised education and capacity building*
- › *Facilitating access to research expertise*

University of Newcastle

- › *Multi-disciplinary and trans-disciplinary teams*
- › *Globally recognised programs and facilities*
- › *Facilitating access to industry partnerships and funding*

University
researchers

THE LANDSCAPE

Commercial research facilitation, business development and intellectual property commercialisation



Facilitates University expertise to real world impact through commercial projects



Connects the world with the University's world-class research and technologies

THE LANDSCAPE

Flagship research institutes

Resource Productivity & Efficiency
Energy Technologies & Utilisation
Advanced Materials for Industrial Innovation
Land, Water, Social Impacts & Sustainability



**INSTITUTE
FOR
REGIONAL
FUTURES**

Prosperous regions
Informed decision makers
Empowered communities

Muuya Banggi – Recovering Language
Umuliko Indigenous Higher Education



Aboriginal & Torres Strait Islander Health
Active and Healthy Aging
Complex and Chronic Illness
Mental Health and Wellbeing



Priority Populations
Healthy Life Course
Healthy Future

THE LANDSCAPE

Colleges, Schools and Centres

College of Engineering, Science and Environment

College of Health, Medicine and Wellbeing

College of Human and Social Futures

60+ research centres



Mark Hughes Foundation Centre for Brain Cancer Research

The Mark Hughes Foundation Centre for Brain Cancer Research is committed to finding a cure and improving the lives of those affected by brain cancer. We aim to advance brain cancer research and achieve the greatest impact for brain cancer patients and their families.

[Read more >](#)



International Network on Gender, Social Justice and Praxis

The Network is focused on promoting more equitable access to and participation in higher education and lifelong learning around the world, particularly for women.

[Read more >](#)



OUR MISSION



**INSTITUTE
FOR
REGIONAL
FUTURES**

In collaboration with University researchers, the Institute for Regional Futures delivers interdisciplinary impact research on regions and regionalism nationally and internationally.

OUR STORY

1964

The Hunter Valley Research Foundation is an expression of the determination of the citizens of this Valley to bring knowledge gained from scientific research to the solution of the problems they face in bringing the resources of the Valley to full development and in contributing still further to the prosperity of the Commonwealth.

It is an exciting and adventurous task!

It is a unique association in Australia—citizens and scientists working together for their solution of a region's problems.

*The Hunter Valley Research Foundation
Annual Report 1964*

1940s

Community campaigns for a University of Newcastle

1951

Founded as a college of the University of NSW

1965

Gains autonomy from the University of NSW

1995

Ourimbah Campus opens

2009

Sydney Campus opens

2018

NUspace opens

2020

Looking Ahead Strategic Plan 2020-25 - strong focus on regions



1955

Community establishes Hunter Valley Research Foundation



1983

Wollotuka established to support Indigenous students



1998

Hunter Medical Research Institute (HMRI) opens



2010

Newcastle Institute for Energy and Resources (NIER) opens



2016

Hunter Research Foundation (HRF) joins University of Newcastle



2021

Central Coast Research Institute (CCRI) opens
Regions Matter launches in NSW, Queensland, Victoria and Tasmania



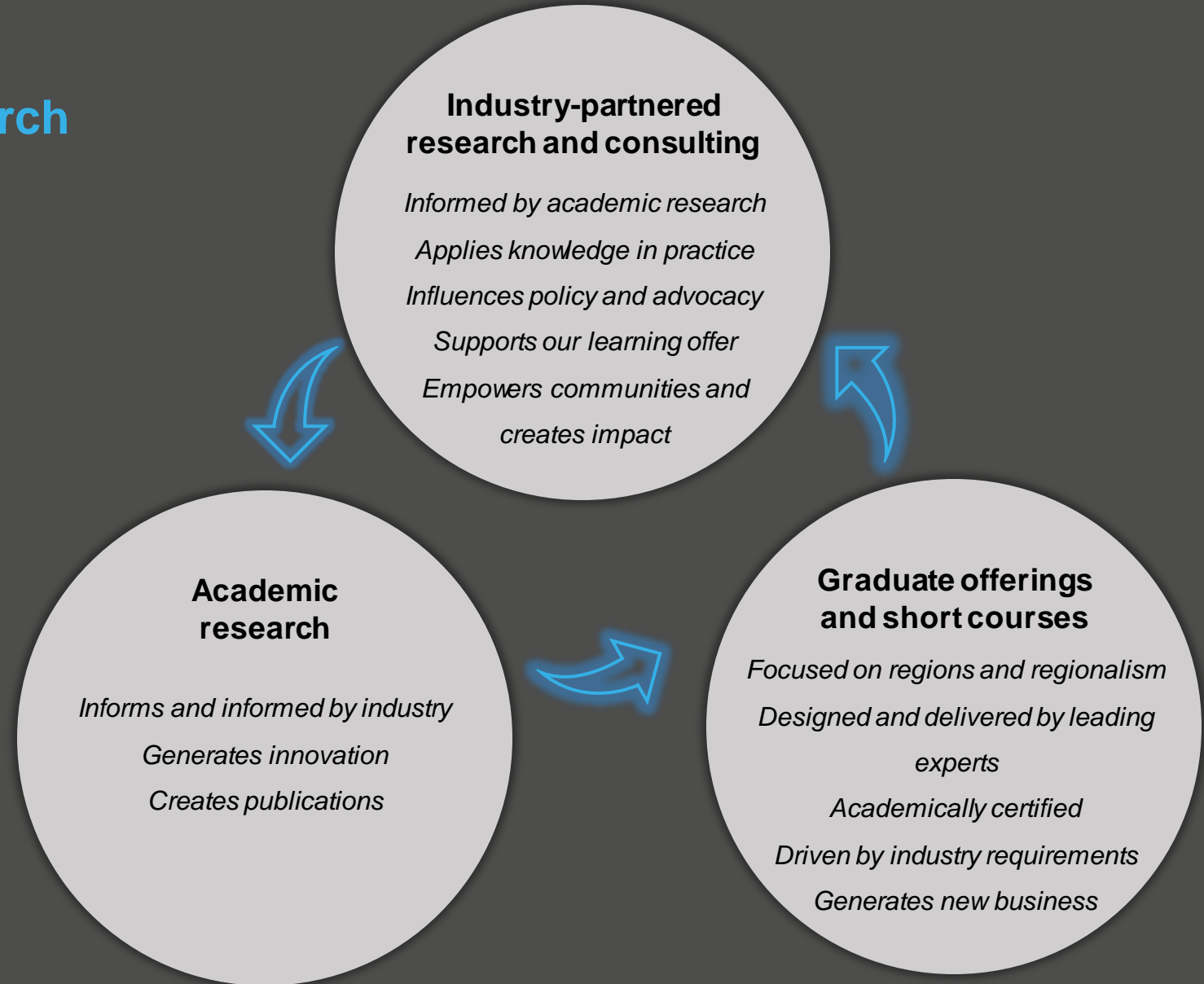
2022

Institute for Regional Futures (IRF) opens

OUR MODEL

Independent fee-for-service research services with expertise in:

- › *Economic development*
- › *Social science*
- › *Strategic spatial (place based) planning*
- › *Governance*
- › *Community engagement*
- › *Organisational development*



WAYS WE PARTNER

Long term partnerships

Our partnerships have been supporting innovation in our region for 60+ years.

Memorandums of Understanding establish trust and enable two way relationships to identify and address the needs of our partners.

As an anchor institute for the Hunter, we are invested in understanding and developing the region. We work with other anchor institutions to further understand not just the science of their business, but how they fit into the place they do business and into the lives of the people they do business with.

Unique projects and once off engagements

Our team is experienced at delivering place-based, tailored advice and solutions founded in academic research.

We work with small businesses, not for profits, private investors to bring visions to life.

Projects don't need to be big and complex; we are here to help with singular, short term and short turnaround pieces of work as well.



In the study of the sediment problems of *Newcastle Harbour*, five large-scale tests of sediment movements in the Steelworks Channel were made during the year. In this work we were once more most generously assisted by the Australian Atomic Energy Commission which provided radio-active material, equipment and manpower to assist us. The Department of the Army also co-operated in a vital phase of this work and our sincere thanks go to the Minister for this help. The results of these tests are now being analysed and a report is in preparation.

Our overall assessment of the role of the Port of Newcastle in the Regional and National economies continues. Target 1 of the publication referred to opposite states:

“The port of Newcastle is a national asset. In terms of tonnages of cargo it is Australia’s largest export port and this means that for the Commonwealth it is a fundamental physical unit in the building up of our foreign balances. In a national situation in which these balances are of the utmost importance to our future prosperity it becomes a matter of the highest priority that this port should be under constant study and the subject of continuous high level expenditure for the increase of its efficiency and the further use of its potential in international trade.

Being an estuarine port it has problems of siltation and these need the closest study and a

WAYS WE PARTNER: ANCHOR INSTITUTIONS

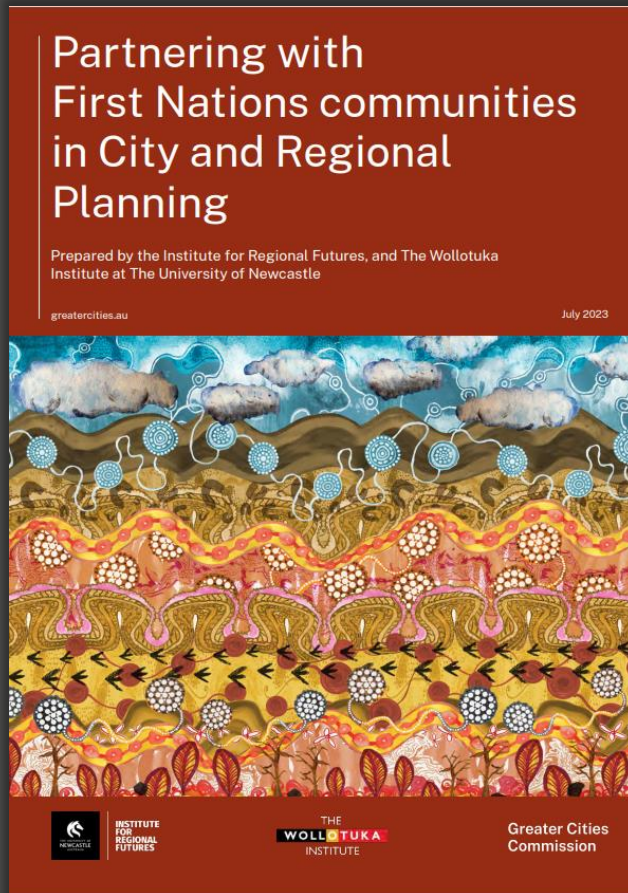
The Port of Newcastle

- Our partnership with the Port of Newcastle is one spanning over 60 years.
- From the 1964 Annual Report, you can see how the partnership has changed based on the challenges of the time, and fundamental economic change.
- Updating the five-year Development Plan and refreshing it’s Master Plan to 2040 are two significant pieces of work that will set the course for the Port’s activity over the coming decades.
- The Master Plan will reposition the Port’s role as an anchor institution for the Hunter and beyond to align with transformative regional economic diversification.

WAYS WE PARTNER: INFORMING BEST PRACTICE

Greater Cities Commission

- The Greater Cities Commission partnered with the University of Newcastle's Wollotuka Institute and the Institute for Regional Futures to undertake an international review of partnerships between First Nations communities and planning authorities.
- This research will underpin the Commission's work developing Australia's first global multi-city region in NSW
- Partnering with First Nations Communities in City and Regional Planning report highlights successful city planning partnership with Indigenous communities internationally and offers recommendations for best practice partnering with Indigenous communities in urban planning.



WAYS WE PARTNER: LIVING LAB MODEL

DANTIA and Lake Macquarie City Council

- This partnership aims to build on work already undertaken by various organisations in the Hunter to identify potential funding sources and develop a definitive evidence base to support the 5-year Strategy and Operational Plan for the Circular Economy Living Lab Hunter.
- The University has established a Memorandum of Understanding with Lake Macquarie City Councils, enabling a strong research relationship.
- Through this partnership we aim to deliver concrete socio-economic reform that will be felt by the community.

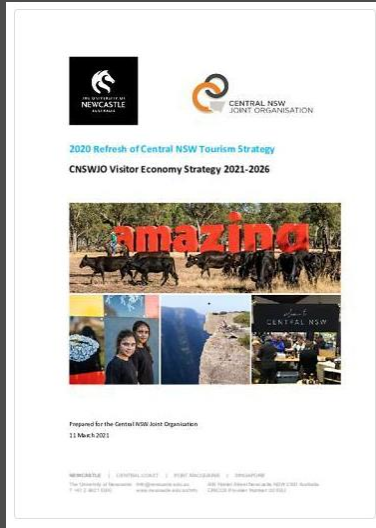
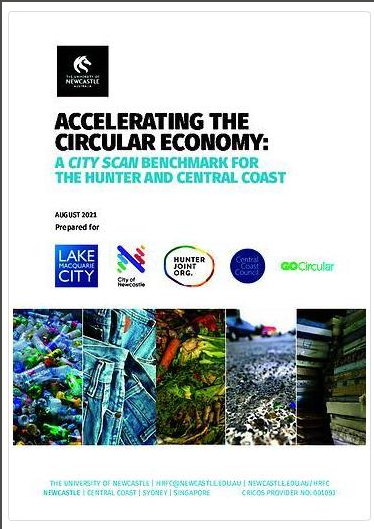


LAKE
MACQUARIE
CITY



THE UNIVERSITY OF
NEWCASTLE
AUSTRALIA

DANTIA



WAYS WE PARTNER: INFORMING POLICY, BUILDING CAPACITY

Local Government focus

Lake Macquarie City Council

- Structural change response
- Accelerating circular economy
- Creative spaces and future of flexible and remote working

Newcastle City Council

- Evaluation of New Move initiative
- Economic Contribution Review

Tasmanian Government

Future of local government review:

- Community sentiment research
- Research support services
- Supply of research and analytical support

- The Institute is trusted by Local, State and Federal Government to provide evidence to inform decision making and strategy.
- Our team are leading researchers in their fields, with a particular focus on Local Government who bring extensive experience nationally and internationally.
- Our passion is supporting regions and communities in transition, facilitating interagency governance and communications, and building capacity to improve public service delivery and improved outcomes for communities.

Q&A



THANK YOU



**INSTITUTE
FOR
REGIONAL
FUTURES**

Amanda Wetzel

M: +61 460 848 680

E: amanda.wetzel@newcastle.edu.au

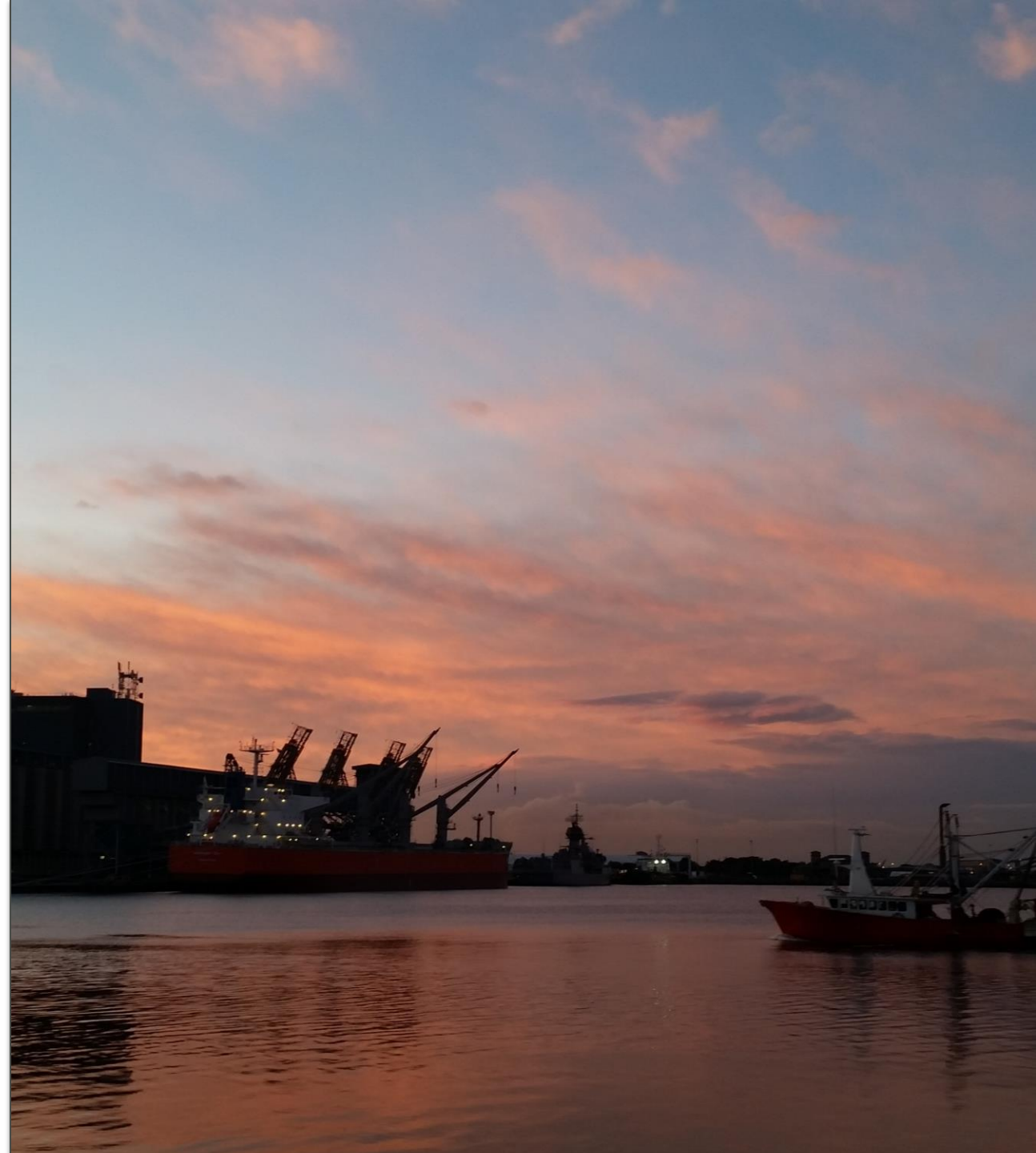
TUNRA

**THE UNIVERSITY OF NEWCASTLE
RESEARCH ASSOCIATES**

Daniel Smith

M: +61 460 760 328

E: daniel.smith1@newcastle.edu.au





THE UNIVERSITY OF
NEWCASTLE
AUSTRALIA