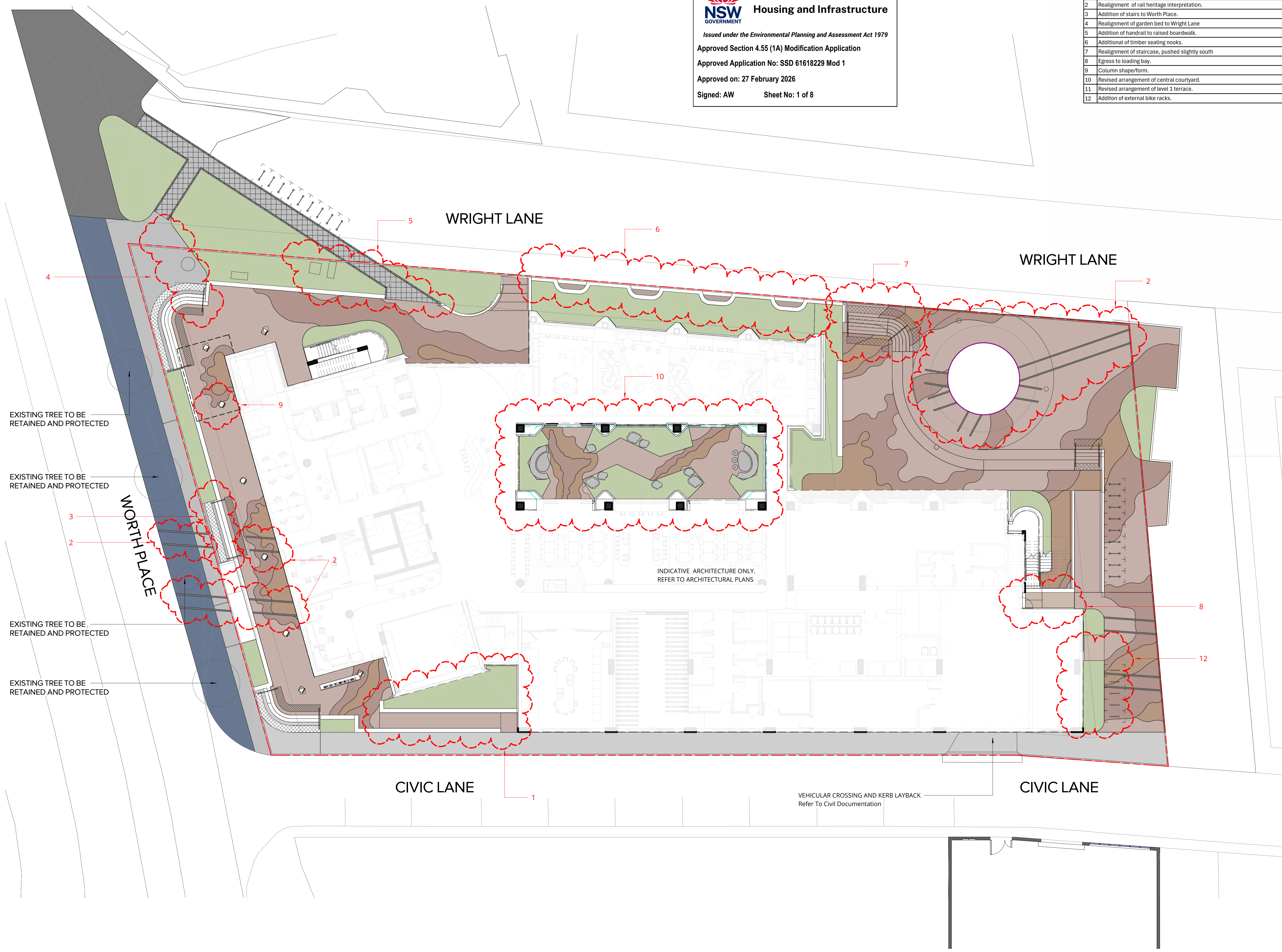




No.	Design Change
1	Removal of trees to Civic Lane garden bed.
2	Realignment of rail heritage interpretation.
3	Addition of stairs to Worth Place.
4	Realignment of garden bed to Wright Lane
5	Addition of handrail to raised boardwalk.
6	Additional of timber seating nooks.
7	Realignment of staircase, pushed slightly south
8	Egress to loading bay.
9	Column shape/form.
10	Revised arrangement of central courtyard.
11	Revised arrangement of level 1 terrace.
12	Addition of external bike racks.

Pty Ltd. Use only figured dimensions. Any other required dimensions are to be referred to and supplied by the landscape architect. All discrepancies to be referred to the project manager and Arcadia Design Group Pty Ltd prior to construction. Ensure compliance with the Building Code of Australia and all relevant Australian Standards and Authority requirements.



Revision	Revision Description	Revision Date
G	SSDA MODIFICATION	28/01/26
T63	SSDA MODIFICATION	23/01/26

City Campus Student Accommodation Building B

16 Honeysuckle Drive, Newcastle

Project Status

Client
THE UNIVERSITY OF NEWCASTLE

Drawing No.
L-CCSA-FLR-20GR33

Drawing Name
HARDWORKS - GROUND FLOOR

Job No. 23.948
Issue G

Scale
1:150 @ A1
0 1 2 3 4 5m

Sydney, Suite 70, Jones Bay Wharf, 26-32 Pirrama Road, Pyrmont NSW 2009
e sydney@arcadiala.com.au
t 02 8571 2900



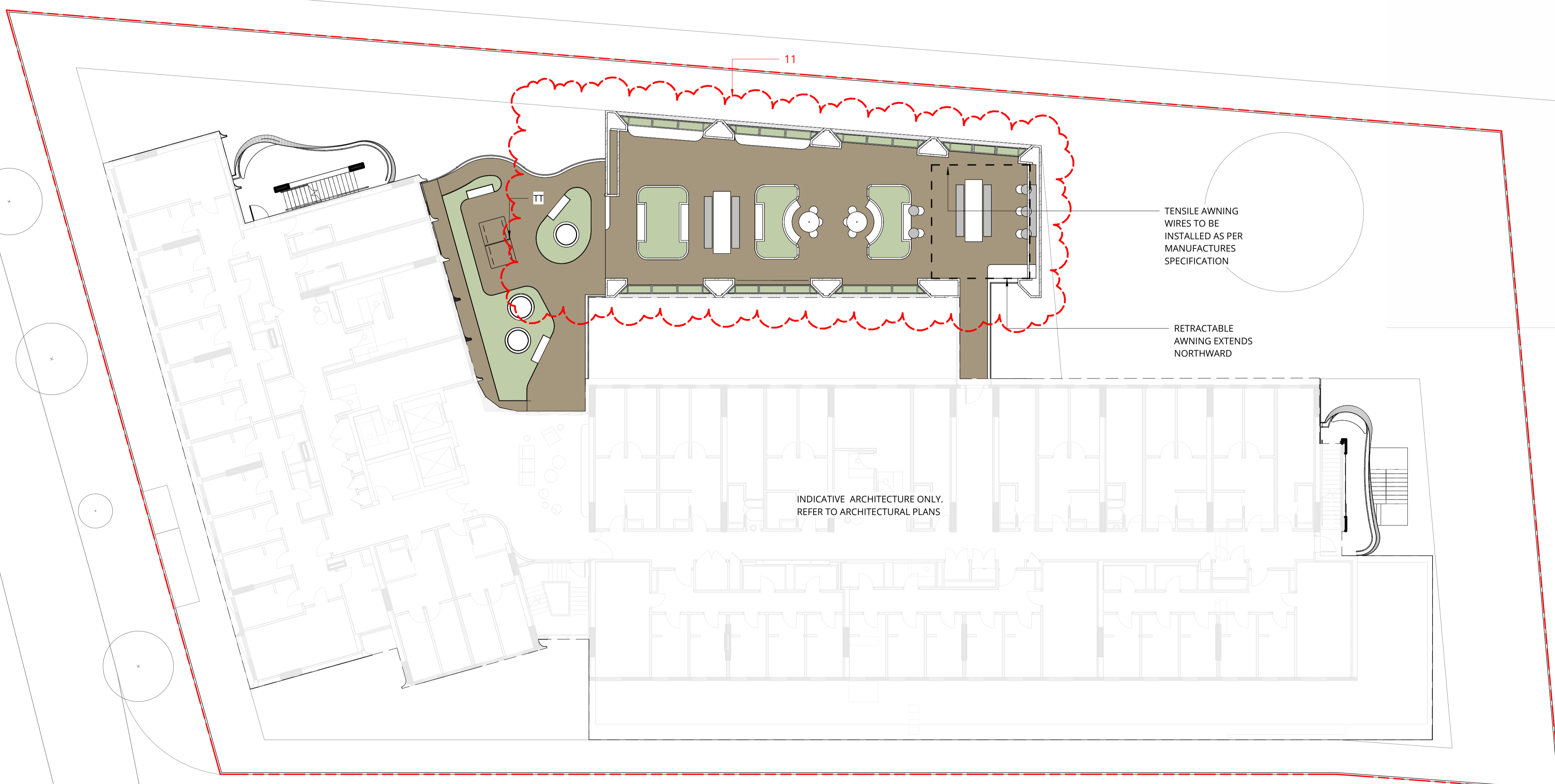


**Department of Planning,
Housing and Infrastructure**

Issued under the *Environmental Planning and Assessment Act 1979*
Approved Section 4.55 (1A) Modification Application
Approved Application No: SSD 61618229 Mod 1
Approved on: 27 February 2026
Signed: AW Sheet No: 2 of 8

No.	Design Change
1	Removal of trees to Civic Lane garden bed.
2	Realignment of rail heritage interpretation.
3	Addition of stairs to Worth Place.
4	Realignment of garden bed to Wright Lane
5	Addition of handrail to raised boardwalk.
6	Additional of timber seating nooks.
7	Realignment of staircase, pushed slightly south
8	Egress to loading bay.
9	Column shape/form.
10	Revised arrangement of central courtyard.
11	Revised arrangement of level 1 terrace.
12	Additon of external bike racks.

Pty Ltd. Use only figured dimensions. Any other required dimensions are to be referred to and supplied by the landscape architect. All discrepancies to be referred to the project manager and Arcadia Design Group Pty Ltd prior to construction. Ensure compliance with the Building Code of Australia and all relevant Australian Standards and Authority requirements.



Revision	Revision Description	Revision Date
G	SSDA MODIFICATION	28/01/26
T63	SSDA MODIFICATION	23/01/26

**City Campus
Student
Accommodation
Building B**

16 Honeysuckle Drive,
Newcastle

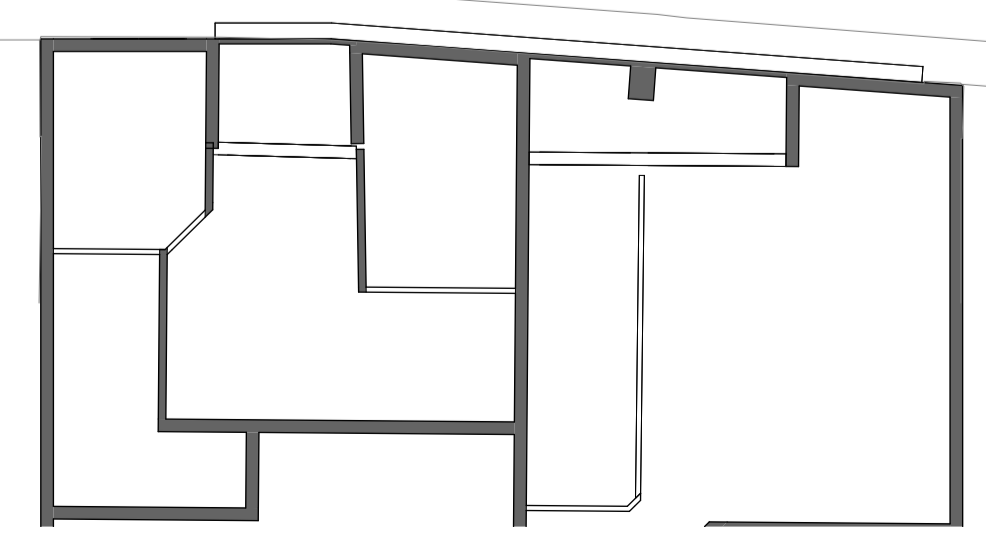
Project Status
SSDA MODIFICATION

Client
**THE UNIVERSITY OF
NEWCASTLE**

Drawing No.
L-CCSA-FLR-20133
Drawing Name
HARDWORKS - LEVEL 1

Job No. 23,948
Issue G
Scale 1:150 @ A1
0 1 2 3 4 5m

Sydney, Suite 70, Jones Bay Wharf, 26-32 Pirrama Road, Pyrmont NSW 2009
e sydney@arcadiala.com.au
t 02 8571 2900




CITY CAMPUS STUDENT ACCOMMODATION BUILDING B

Sheet List	
Sheet Number	Sheet Name
000	COVERSHEET
400	SOFTWARES SCHEDULES
401	SOFTWARES - GROUND FLOOR
402	SOFTWARES - LEVEL 1
L-CCSA-FLR-20GR33	HARDWORKS - GROUND FLOOR
L-CCSA-FLR-20133	HARDWORKS - LEVEL 1
601	DETAILS PLANTING
650	LANDSCAPE SPECIFICATION



 UON Honeysuckle City Campus
 Site B
 Extent of Public Domain Works



**Department of Planning,
Housing and Infrastructure**

Issued under the Environmental Planning and Assessment Act 1979

Approved Section 4.55 (1A) Modification Application

Approved Application No: SSD 61618229 Mod 1

Approved on: 27 February 2026

Signed: AW Sheet No: 3 of 8

Pty Ltd. Use only figured dimensions. Any other required dimensions are to be referred to and supplied by the landscape architect. All discrepancies to be referred to the project manager and Arcadia Design Group Pty Ltd prior to construction. Ensure compliance with the Building Code of Australia and all relevant Australian Standards and Authority requirements.

Revision	Revision Description	Revision Date
G	SSDA MODIFICATION	28/01/26
F	SSDA MODIFICATION	23/01/26

City Campus Student Accommodation Building B

16 Honeysuckle Drive, Newcastle

Project Status
SSDA MODIFICATION

Client
THE UNIVERSITY OF NEWCASTLE

Drawing No.
000
Drawing Name
COVERSHEET

Job No. 23,948
Issue G
Scale @ A1
0 1 2 3 4 5m

Sydney, Suite 70, Jones Bay Wharf, 26-32 Pirrama Road, Pyrmont NSW 2009
e sydney@arcadiala.com.au
t 02 8571 2900



Tree Schedule					
Type Mark	Botanical Name	Common Name	Mature Size	Proposed Pot Size	Count
Af	Acacia Floribunda	Weeping Acacia	10 x 4	45L	8
Ca	Cyathea australis	Rough Tree Fern	8 x 3	45L	5
Cm	Corymbia maculata	Spotted Gum	30 x 10	45L	2
Dan	Dicksonia antarctica	Soft Tree Fern	5 x 2	45L	5
La	Livistona australis	Cabbage-Tree Palm	30 x 6	45L	6
Mq	Melaleuca quinqueneruia	Broad-Leaved Paperbark	20 x 8	45L	2
Sa	Syzygium australe	Lilly Pilly	5 x 3	45L	8
Tc	Toona ciliata	Red Cedar	30 x 10	45L	1
TI	Tristaniopsis laurina	Water Gum	10 x 6	45L	4

Grand total: 41

Shrubs Schedule					
Type Mark	Botanical Name	Common Name	Mature Size	Proposed Pot Size	Count
Aa	Adiantum aethiopicum	Maiden Hair Fern	0.5 x 0.5	150mm	51
Aau	Asplenium australasicum	Birds Nest Fern	1.5 x 1.5	150mm	23
Ac	Alpinia caerulea	Native Ginger	2.5 x 2	150mm	95
Da	Doodia aspera	Prickly Rasp Fern	0.4 x 0.6	150mm	69
Et	Enchylaena tomentosa	Ruby Saltbush	1 x 1	300mm	24
	EXISTING TREE TO BE RETAINED AND PROTECTED				4
Lp	Leptospermum polygalifolium	Coastal Tree Tree	4 x 2	300mm	21
PI	Persoonia lanceolata	Lance-Leaf Geebung	3 x 2	300mm	35
ZS	Zieria smithii	Sandfly Zieria	2 x 1	300mm	70

Grand total: 392

Grasses & Ground Covers - Key Schedule						
CODE	BOTANIC NAME	COMMON NAME	MATURE SIZE (h x w) (m)	PROPOSED POT SIZE	QUANTITY PER m2	Q

MIX 1

GROUNDCOVERS & GRASSES

Vh	Viola hederacea	Native violet	0.15 x 2	150mm	6/m2	24
Cgc	Casuarina glauca 'Cousin It'	Cousin It	0.20 x 1.5	150mm	4/m2	17
Dsf	Dichondra 'Silver Fall'	Silver Fall	5 x 0.8	150mm	6/m2	24
Mp	Myoporum parvifolium	Boobialla	1 x 1	150mm	4/m2	17

MIX 2

GROUNDCOVERS & GRASSES

Jk	Juncus Kraussii	salt marsh rush	1 x 1.5	150mm	2/m2	71
Ca	Carex appressa	Tall Sledge	1 x 1	150mm	4/m2	141
PI	Poa labillardieri	common tussock-grass	1.2 x 0.5	150mm	2/m2	71
Pa	Poa affinis	tussock grass	1 x 0.5	150mm	4/m2	141
Ju	Juncus Usitatus	Common Rush	1.2 x 0.5	150mm	4/m2	141

MIX 3

GROUNDCOVERS & GRASSES

Dr	Dianella revoluta	Blueberry Lily	1 x 1.5	150mm	6/m2	32
Drs	Dichondra repens	Kidney Weed	0.1 x 1	150mm	6/m2	32
Vh	Viola hederacea	Native violet	0.15 X 2	150mm	6/m2	32

MIX 4

GROUNDCOVERS & GRASSES

Dr	Dianella revoluta	Blueberry Lily	1 x 1.5	150mm	6/m2	189
PI	Poa labillardieri	common tussock-grass	1.2 x 0.5	150mm	2/m2	70
Mp	Myoporum parvifolium	Creeping Boobialla	1 x 1	150mm	4/m2	130
LI	Lomandra longifolia	Piny-head Mat-rush	1.2 x 1	150mm	2/m2	70
Cg	Carpobrotus glaucescens	Pig Face	0.3 x 2	150mm	4/m2	104



**Department of Planning,
Housing and Infrastructure**

Issued under the Environmental Planning and Assessment Act 1979
Approved Section 4.55 (1A) Modification Application
Approved Application No: SSD 61618229 Mod 1
Approved on: 27 February 2026
Signed: AW Sheet No: 4 of 8

G	SSDA MODIFICATION	28/01/26
F	SSDA MODIFICATION	23/01/26

Revision	Revision Description	Revision Date
	Project	

**City Campus
Student
Accommodation
Building B**

16 Honeysuckle Drive,
Newcastle

Project Status
SSDA MODIFICATION

Client
THE UNIVERSITY OF
NEWCASTLE

Drawing No.
400
Drawing Name
SOFTWARES SCHEDULES

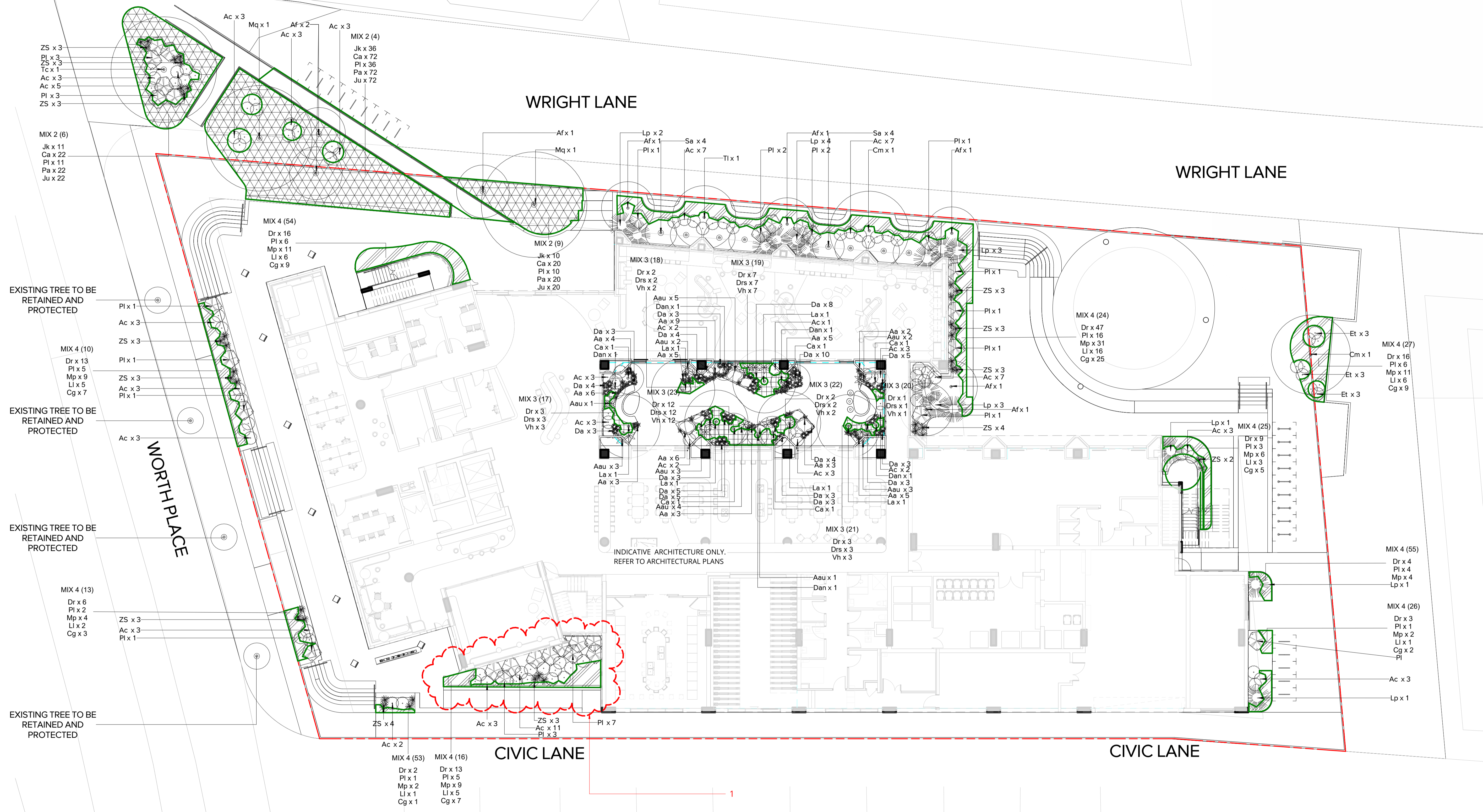
Job No. 23,948
Issue G
Scale @ A1
0 1 2 3 4 5m

Sydney, Suite 70, Jones Bay Wharf, 26-32 Pirrama Road, Pyrmont NSW 2009
e sydney@arcadiala.com.au
t 02 8571 2900

ARCADIA

No.	Design Change
1	Removal of trees to Civic Lane garden bed.
2	Realignment of rail heritage interpretation.
3	Addition of stairs to Worth Place.
4	Realignment of garden bed to Wright Lane
5	Addition of handrail to raised boardwalk.
6	Additional of timber seating nooks.
7	Realignment of staircase, pushed slightly south
8	Egress to loading bay.
9	Column shape/form.
10	Revised arrangement of central courtyard.
11	Revised arrangement of level 1 terrace.
12	Addition of external bike racks.

Pty Ltd. Use only figured dimensions. Any other required dimensions are to be referred to and supplied by the landscape architect. All discrepancies to be referred to the project manager and Arcadia Design Group Pty Ltd prior to construction. Ensure compliance with the Building Code of Australia and all relevant Australian Standards and Authority requirements.



Revision	Revision Description	Revision Date
G	SSDA MODIFICATION	28/01/26
F	SSDA MODIFICATION	23/01/26

Project: City Campus Student Accommodation Building B

**City Campus
Student
Accommodation
Building B**

16 Honeysuckle Drive,
Newcastle

Project Status:
SSDA MODIFICATION

Client:
THE UNIVERSITY OF
NEWCASTLE

Drawing No:
401

Drawing Name:
SOFTWARES - GROUND
FLOOR

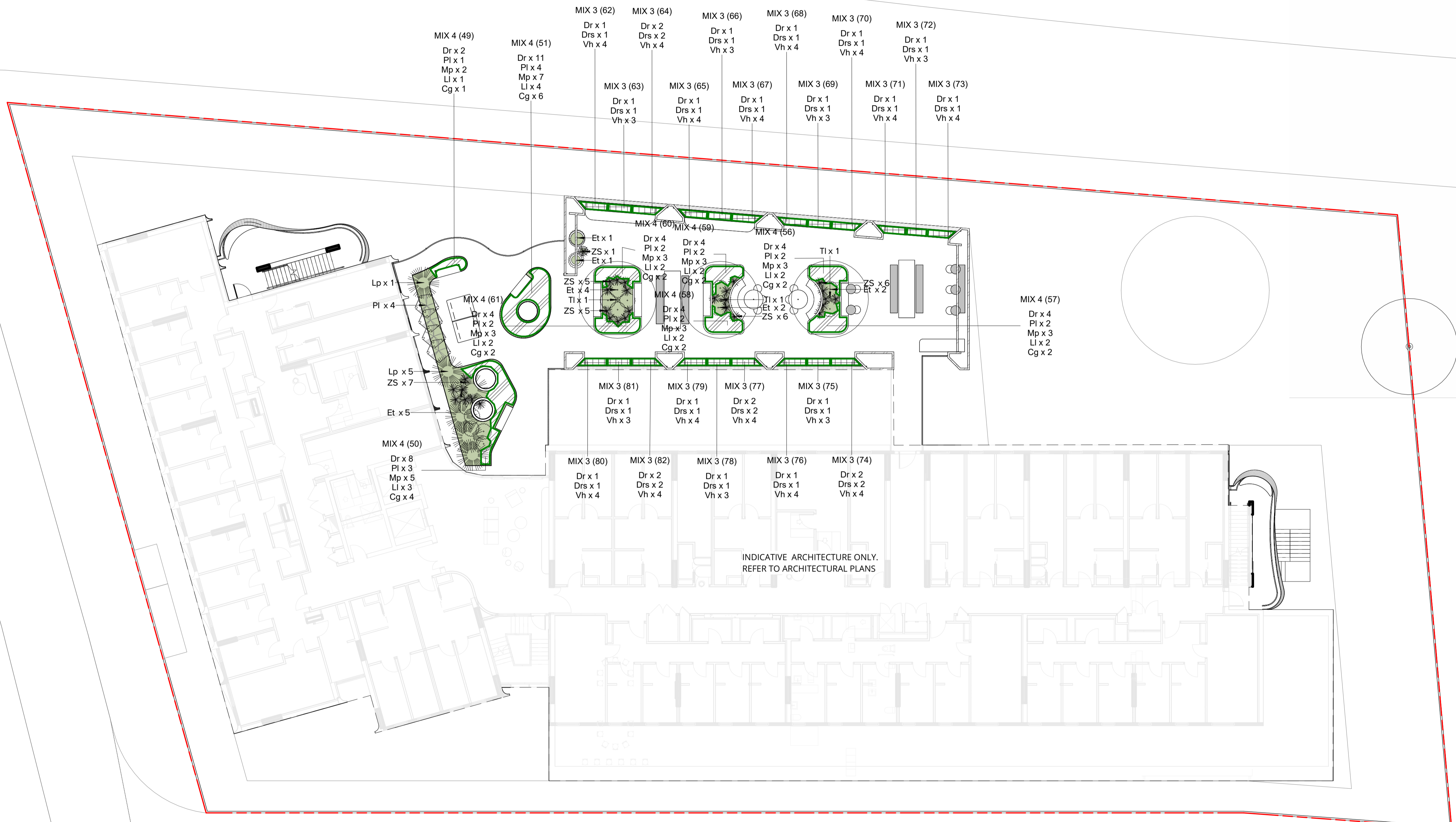
Job No.: 23,948
Issue: G

Scale:
1:150 @ A1
0 1 2 3 4 5m

Sydney, Suite 70, Jones Bay Wharf, 26-32 Pirrama Road, Pyrmont NSW 2009
 e sydney@arcadia.com.au
 t 02 8571 2900

No.	Design Change
1	Removal of trees to Civic Lane garden bed.
2	Realignment of rail heritage interpretation.
3	Addition of stairs to Worth Place.
4	Realignment of garden bed to Wright Lane
5	Addition of handrail to raised boardwalk.
6	Additional of timber seating nooks.
7	Realignment of staircase, pushed slightly south
8	Egress to loading bay.
9	Column shape/form.
10	Revised arrangement of central courtyard.
11	Revised arrangement of level 1 terrace.
12	Addition of external bike racks.

Pty Ltd. Use only figured dimensions. Any other required dimensions are to be referred to and supplied by the landscape architect. All discrepancies to be referred to the project manager and Arcadia Design Group Pty Ltd prior to construction. Ensure compliance with the Building Code of Australia and all relevant Australian Standards and Authority requirements.



Revision	Revision Description	Revision Date
G	SSDA MODIFICATION	28/01/26
F	SSDA MODIFICATION	23/01/26

Project

**City Campus
Student
Accommodation
Building B**

16 Honeysuckle Drive,
Newcastle

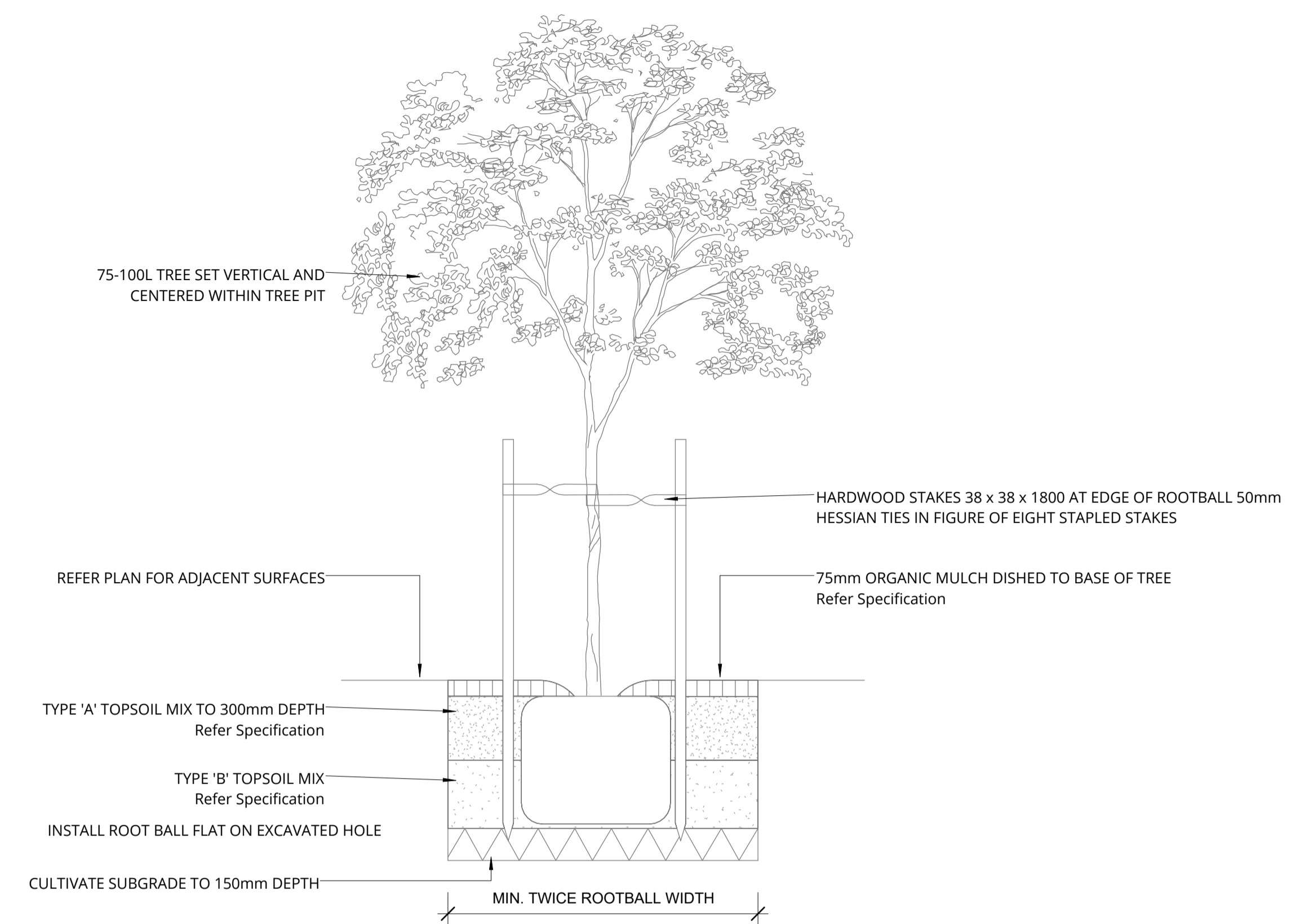
Project Status
SSDA MODIFICATION

Client
**THE UNIVERSITY OF
NEWCASTLE**

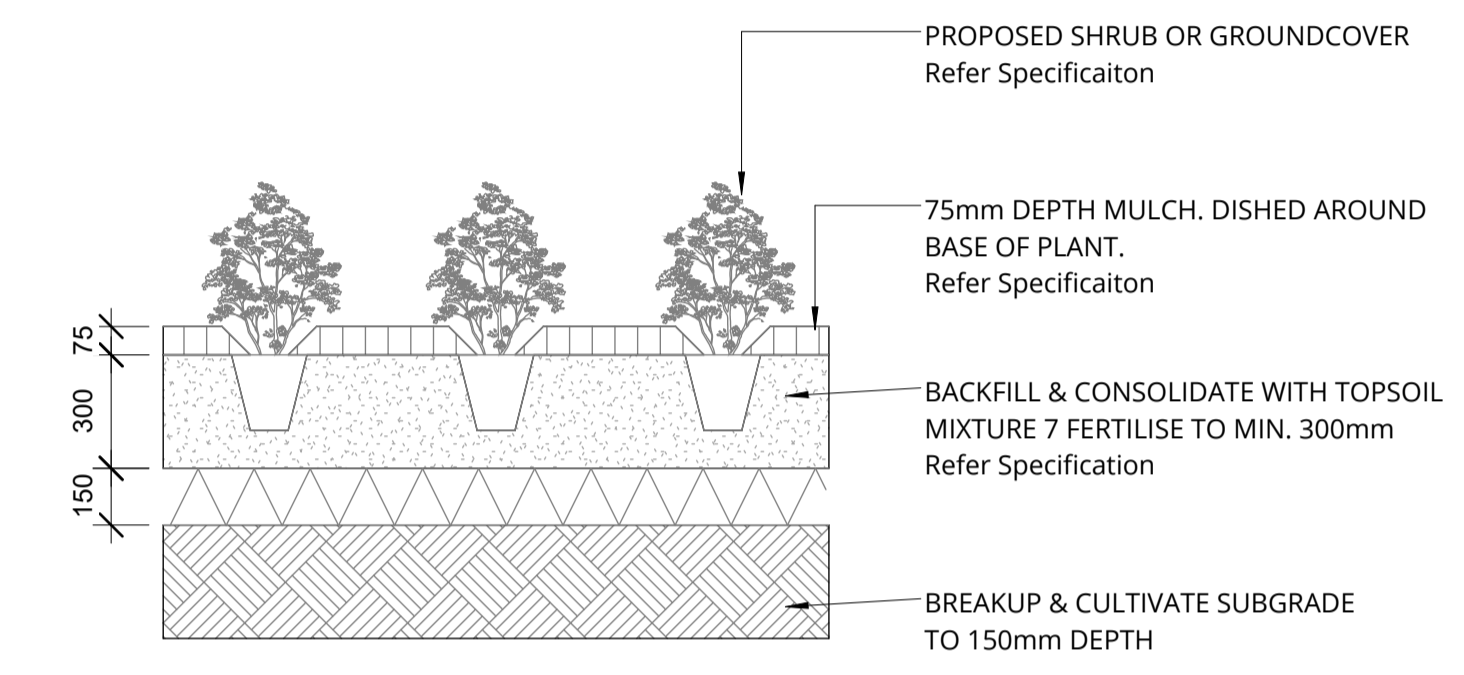
Drawing No.
402
Drawing Name
SOFTWARES - LEVEL 1

Job No. 23,948
Issue G
Scale 1:150 @ A1
0 1 2 3 4 5m

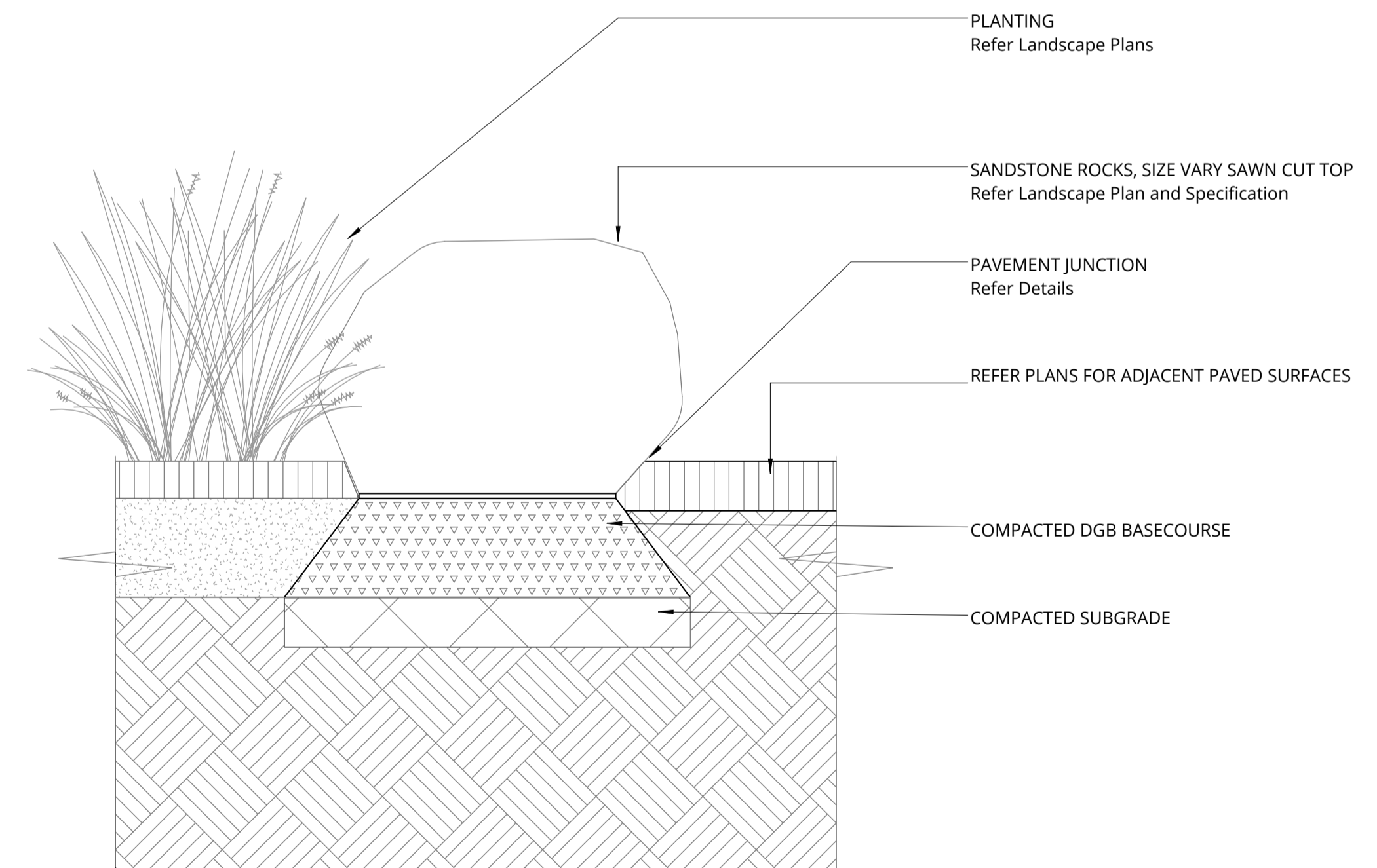
Sydney, Suite 70, Jones Bay Wharf, 26-32 Pirrama Road, Pyrmont NSW 2009
e sydney@arcadiala.com.au
t 02 8571 2900



1 TREE PLANTING 75-100L
1 : 20



2 SHRUB OR GROUNDCOVER IN PLANTING BED
1 : 20



3 ROCK EDGING - TYPICAL DETAIL
1 : 10

NSW GOVERNMENT Department of Planning, Housing and Infrastructure
 Issued under the Environmental Planning and Assessment Act 1979
 Approved Section 4.55 (1A) Modification Application
 Approved Application No: SSD 61618229 Mod 1
 Approved on: 27 February 2026
 Signed: AW Sheet No: 7 of 8

Revision	Revision Description	Revision Date
G	SSDA MODIFICATION	28/01/26
F	SSDA MODIFICATION	23/01/26

City Campus Student Accommodation Building B

16 Honeysuckle Drive, Newcastle

Project Status
SSDA MODIFICATION

Client
THE UNIVERSITY OF NEWCASTLE

Drawing No.
601
Drawing Name
DETAILS PLANTING

Job No. 23,948
Issue G
Scale As indicated @ A1
0 1 2 3 4 5m

Sydney, Suite 70, Jones Bay Wharf, 26-32 Pirrama Road, Pyrmont NSW 2009
e sydney@arcadiala.com.au
t 02 8571 2900

LANDSCAPE SPECIFICATION NOTES

SERVICES

BEFORE LANDSCAPE WORK IS COMMENCED THE LANDSCAPE CONTRACTOR IS TO ESTABLISH THE POSITION OF ALL SERVICE LINES AND ENSURE TREE PLANTING IS CARRIED OUT AT LEAST 3 METRES AWAY FROM THESE SERVICES. SERVICE LIDS, VENTS AND HYDRANTS SHALL BE LEFT EXPOSED AND NOT COVERED BY ANY LANDSCAPE FINISHES (TURFING, PAVING, GARDEN BEDS ETC.) FINISH ADJOINING SURFACES FLUSH WITH PIT LIDS.

TREE PROTECTION FENCING, ROOT ZONE AND TRUNK PROTECTION

PRIOR TO SITE ESTABLISHMENT, TREE PROTECTION FENCING AND ROOT ZONE / TRUNK PROTECTION SHALL BE INSTALLED TO ESTABLISH THE TPZ FOR TREES TO BE RETAINED, IN ACCORDANCE WITH SITE CONDITIONS. THESE PROTECTIVE BARRIERS SHALL BE MAINTAINED ENTIRE FOR THE DURATION OF THE CONSTRUCTION PROGRAM.

TREE PROTECTION FENCING AND ROOT ZONE / TRUNK PROTECTION SHALL BE REMOVED FOLLOWING COMPLETION OF CONSTRUCTION. THE MULCH LAYER IN THE TPZ SHALL BE RETAINED AND REPLENISHED WHERE REQUIRED TO MAINTAIN A DEPTH OF 75MM

ARBORIST MANAGEMENT OF TREE PROTECTION

A QUALIFIED AND APPROVED ARBORIST IS TO BE CONTRACTED TO UNDERTAKE OR MANAGE THE INSTALLATION OF PROTECTIVE FENCING, AND TO UNDERTAKE SUCH MEASURES AS HE DEEMS APPROPRIATE TO PRESERVE THE SUBJECT TREES TO BE RETAINED. THE ARBORIST IS TO BE RETAINED FOR THE ENTIRE CONTRACT PERIOD TO UNDERTAKE ONGOING MANAGEMENT AND REVIEW OF THE TREES.

DRAINAGE CELL AND FILTER FABRIC

FOR ON-SLAB AREAS INSTALL AN APPROVED 'DRAINAGE CELL' PRODUCT TO COMPREHENSIVELY COVER THE BOTTOM OF ALL PLANTERS. OVER DRAINAGE CELL TO ON-SLAB AREAS, A POLYFELT GEOTEXTILE LINING (AS SUPPLIED BY 'POLYFELT TS' OR APPROVED EQUIVALENT) IS TO BE INSTALLED TO COVER THE BOTTOM OF ALL PLANTERS, TURNED UP 300MM AND TAPED TO THE PLANTER SIDES TO ENSURE SOIL MIX DOES NOT ESCAPE INTO DRAINAGE OUTLETS/HOLES. INSTALL MIN. 50MM COARSE RIVER SAND OVER ALL GEOTEXTILE LINING PRIOR TO INSTALLATION OF SOIL MIX.

PLANTING MIXTURE

SHALL BE HOMOGENOUS BLEND OF SOIL AND ADDITIVES IN THE FOLLOWING PROPORTIONS:

EXISTING SITE SOIL IF SUITABLE OR

IMPORTED TOPSOIL 50%

COMPOST 30%

D/W SAND 20%

SOIL TESTING OF EXISTING SITE SOIL IS TO BE UNDERTAKEN TO ASSESS SUITABILITY OF USE AS PLANTING TOPSOIL AND COMPLIANCE WITH AUSTRALIAN

STANDARDS.

MULCH APPLICATION

PLACE MULCH TO THE REQUIRED DEPTH. (REFER TO DRAWINGS) CLEAR OF PLANT STEMS, AND RAKE TO AN EVEN SURFACE FINISHING 25MM BELOW ADJOINING LEVELS. ENSURE MULCH IS WATERED IN AND TAMPED DOWN DURING INSTALLATION.

MULCH TYPE

PINE BARK: FROM MATURE TREES, GRADED IN SIZE FROM 15MM TO 30MM, FREE FROM WOOD SLIVERS. DARK BROWN IN COLOUR AND TEXTURE.

COMPOST

SHALL BE WELL ROTTED VEGETATIVE MATERIAL OR ANIMAL MANURE, OR OTHER APPROVED MATERIAL, FREE FROM HARMFUL CHEMICALS, GRASS AND WEED GROWTH AND WITH NEUTRAL PH. PROVIDE A CERTIFICATE OF PROOF OF PH UPON REQUEST.

PLANT MATERIAL

ALL PLANTS SUPPLIED ARE TO CONFORM WITH THOSE SPECIES LISTED IN THE PLANT SCHEDULE ON THE DRAWINGS. GENERALLY PLANTS SHALL BE VIGOROUS, WELL ESTABLISHED, HARDENED OFF, OF GOOD FORM CONSISTENT WITH SPECIES OR VARIETY, NOT SOFT OR FORCED, FREE FROM DISEASE OR INSECT PESTS WITH LARGE HEALTHY ROOT SYSTEMS AND NO EVIDENCE OF HAVING BEEN RESTRICTED OR DAMAGED. TREES SHALL HAVE A LEADING SHOOT. IMMEDIATELY REJECT DRIED OUT, DAMAGED OR UNHEALTHY PLANT MATERIAL BEFORE PLANTING. ALL STOCK IS TO BE CONTAINER GROWN FOR A MINIMUM OF SIX (6) MONTHS PRIOR TO DELIVERY TO SITE

FERTILISER MASS PLANTING AREAS:

FERTILISER SHALL BE 'NUTRICOTE' OR APPROVED EQUIVALENT IN GRANULE FORM INTENDED FOR SLOW RELEASE OF PLANT NUTRIENTS OVER A PERIOD OF APPROXIMATELY NINE MONTHS. THOROUGHLY MIX FERTILISER WITH PLANTING MIXTURE AT THE RECOMMENDED RATE, PRIOR TO INSTALLING PLANTS.

STAKING AND TYING

STAKES SHALL BE STRAIGHT HARDWOOD, FREE FROM KNOTS AND TWISTS, POINTED AT ONE END AND

SIZED ACCORDING TO SIZE

OF PLANTS TO BE STAKED.

A. 5-15 LITRE SIZE PLANT 1X(1200X25X25MM)

B. 35-75 LITRE SIZE PLANT 2X(1500X38X38MM)

C. 100-GREATER THAN 200LITRE 3X(1800X50X50MM)

TIES SHALL BE 50MM WIDE HESSIAN WEBBING OR APPROVED EQUIVALENT NAILED OR STAPLED TO STAKE. DRIVE STAKES A MINIMUM ONE THIRD OF THEIR LENGTH, AVOIDING DAMAGE TO THE ROOT SYSTEM, ON THE WINDWARD SIDE OF THE PLANT.

IRRIGATION SYSTEM

SUPPLY AN AUTOMATIC WATERING SYSTEM USING 'DRIP LINE IRRIGATION SYSTEM' OR SIMILAR APPROVED, WITH MICRO-JET SPRINKLER HEADS AND LOW DENSITY, RUBBER MODIFIED POLYPROPYLENE RETICULATION, TO INCLUDE FILTERS, BENDS JUNCTIONS, ENDS AND OTHER ANCILLARY EQUIPMENT. THE LANDSCAPER SHALL NOMINATE HIS SOURCE OF SUPPLY FOR THE WATERING SYSTEM AND OBTAIN APPROVAL FROM THE SUPERINTENDENT BEFORE PLACING ORDERS FOR EQUIPMENT OR SUPPLY.

A SCHEMATIC PLAN OF THE PROPOSED IRRIGATION SYSTEM IS TO BE PREPARED BY THE CONTRACTOR, SHOWING SOLENOIDS, PIPE DIAMETERS, AND ALL NOZZLE AND TRICKLE ATTACHMENT TYPES (INCLUDING SPRAY/HEAD ANGLE), FOR REVIEW BY THE SUPERINTENDENT PRIOR TO INSTALLATION

THE CONTRACTOR IS TO LIASE WITH THE HYDRAULIC ENGINEER AND COUNCIL AS NECESSARY, TO ENSURE THE THE IRRIGATION SYSTEM CONFORMS WITH ALL THE COUNCIL AND WATER BOARD CODES AND REQUIREMENTS.

PROVIDE AN AUTOMATIC CONTROLLER THAT PROVIDES FOR TWO WEEK SCHEDULING AND HOURLY MULTI-CYCLE OPERATION. THE CONTROLLER SHALL MANUAL OVERRIDE. PROGRAMMING SHALL BE UNDERTAKEN BY THE CONTRACTOR WHO SHALL ADVISE ON THE OPERATION OF THE SYSTEM.

PROVISION OF SECURE HOUSING FOR THE AUTOMATIC IRRIGATION CONTROLLER TO BE LOCATED IN ASSOCIATION WITH THE LANDSCAPE CONTRACTOR AND LOCATION CONFIRMED BY THE SUPERINTENDENT. WIRING TO CONNECT REMOTE SOLENOID LOCATIONS IS TO BE PROVIDED. THE CONTROLLER SHALL BE LOCATED IN A DRY PLACE, PROTECTED FROM THE WEATHER, AND ALL CABLE CONNECTIONS SHALL BE MADE WITH WATERPROOF CONNECTORS.

WATER SUPPLY POINTS TO BE SUPPLIED BY BUILDER.

IT SHALL BE THE CONTRACTOR'S RESPONSIBILITY TO ENSURE AND GUARANTEE SATISFACTORY OPERATION OF THE IRRIGATION SYSTEM.

AFTER THE SYSTEM HAS BEEN INSTALLED TO THE SATISFACTION OF THE SUPERINTENDENT, THE INSTALLATION SHALL BE TESTED UNDER KNOWN WORKING CONDITIONS. ACCEPTANCE OF THE INSTALLED PLANT AND EQUIPMENT SHALL BE SUBJECT TO THESE BEING SATISFACTORY.

TREATED PINE TIMBER EDGING

TIMBER EDGE: 100 X 25MM CCA TREATED RADIATA PINE TIMBER STAKES: 50 X 50 X 500MM CCA TREATED RADIATA PINE-SHARPENED AT ONE END. INSTALL IN LOCATIONS SHOWN ON THE DRAWINGS FLUSH TO FINISHED SURFACE LEVELS.

LANDSCAPE MAINTENANCE PROGRAM

MAINTENANCE SHALL MEAN THE CARE AND MAINTENANCE OF THE LANDSCAPE WORKS BY ACCEPTED HORTICULTURAL PRACTICE AS RECTIFYING ANY DEFECTS THAT BECOME APPARENT IN THE LANDSCAPE WORKS UNDER NORMAL USE. THIS SHALL INCLUDE, BUT SHALL NOT BE LIMITED TO, WATERING, MOWING, FERTILISING, RESEEDING, RETURNING, WEEDING, PEST AND DISEASE CONTROL, STAKING AND TYING, REPLANTING, CULTIVATION, PRUNING, AERATING, RENOVATING, TOP DRESSING, MAINTAINING THE SITE IN A NEAT AND TIDY CONDITION AS FOLLOWS:-

GENERAL

THE LANDSCAPE CONTRACTOR SHALL MAINTAIN THE LANDSCAPE WORKS FOR THE TERM OF THE MAINTENANCE (OR PLANT ESTABLISHMENT) PERIOD TO THE SATISFACTION OF THE COUNCIL. THE LANDSCAPE CONTRACTOR SHALL ATTEND TO THE SITE ON A WEEKLY BASIS. THE MAINTENANCE PERIOD SHALL COMMENCE AT PRACTICAL COMPLETION AND CONTINUE FOR A PERIOD OF TWENTY SIX (26) WEEKS.

WATERING

GRASS, TREES AND GARDEN AREAS SHALL BE WATERED REGULARLY SO AS TO ENSURE CONTINUOUS HEALTHY GROWTH.

RUBBISH REMOVAL

DURING THE TERM OF THE MAINTENANCE PERIOD THE LANDSCAPE CONTRACTOR SHALL REMOVE RUBBISH THAT MAY OCCUR AND REOCCUR THROUGHOUT THE MAINTENANCE PERIOD. THIS WORK SHALL BE CARRIED OUT REGULARLY SO THAT AT WEEKLY INTERVALS THE AREA MAY BE OBSERVED IN A COMPLETELY CLEAN AND TIDY CONDITION.

REPLACEMENTS

THE LANDSCAPE CONTRACTOR SHALL REPLACE ALL PLANTS THAT ARE MISSING, UNHEALTHY OR DEAD AT THE LANDSCAPE CONTRACTOR'S COST. REPLACEMENTS SHALL BE OF THE SAME SIZE, QUALITY AND SPECIES AS THE PLANT THAT HAS FAILED UNLESS OTHERWISE DIRECTED BY THE LANDSCAPE ARCHITECT. REPLACEMENTS SHALL BE MADE ON A CONTINUING BASIS NOT EXCEEDING TWO (2) WEEKS AFTER THE PLANT HAS DIED OR IS SEEN TO BE MISSING.

STAKES AND TIES

THE LANDSCAPE CONTRACTOR SHALL REPLACE OR ADJUST PLANT STAKES, AND TREE GUARDS AS NECESSARY OR AS DIRECTED BY THE LANDSCAPE ARCHITECT. REMOVE STAKES AND TIES AT THE END OF THE MAINTENANCE PERIOD IF SO DIRECTED.

PRUNING

TREES AND SHRUBS SHALL BE PRUNED AS DIRECTED BY THE LANDSCAPE ARCHITECT. PRUNING WILL BE DIRECTED AT THE MAINTENANCE OF THE DENSE FOLIAGE OR MISCELLANEOUS PRUNING AND BENEFICIAL TO THE CONDITION OF THE PLANTS. ANY DAMAGED GROWTH SHALL BE PRUNED. ALL PRUNED MATERIAL SHALL BE REMOVED FROM THE SITE.

MULCHED SURFACES

ALL MULCHED SURFACES SHALL BE MAINTAINED IN A CLEAN AND TIDY CONDITION AND BE REINSTATED IF NECESSARY TO ENSURE THAT A DEPTH OF 75MM IS MAINTAINED. ENSURE MULCH IS KEPT CLEAR OF PLANT STEMS AT ALL TIMES.

PEST AND DISEASED CONTROL

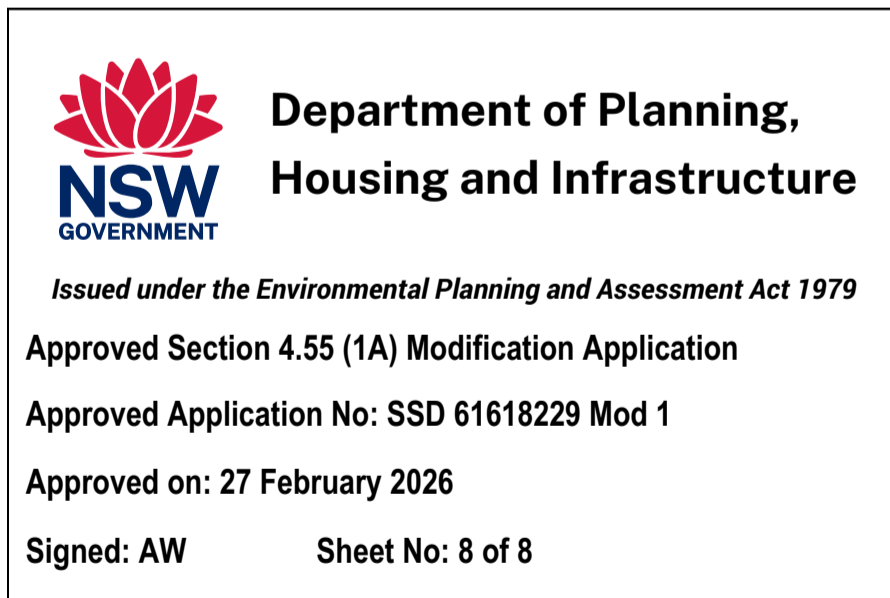
THE LANDSCAPE CONTRACTOR SHALL SPRAY AGAINST INSECT AND FUNGUS INFESTATION WITH ALL SPRAYING TO BE CARRIED OUT IN ACCORDANCE WITH THE MANUFACTURER'S DIRECTIONS. REPORT ALL INSTANCES OF PESTS AND DISEASES (IMMEDIATELY THAT THEY ARE DETECTED) TO THE LANDSCAPE ARCHITECT.

WEED ERADICATION

ERADICATE WEEDS BY ENVIRONMENTALLY ACCEPTABLE METHODS USING A NON-RESIDUAL GLYPHOSATE HERBICIDE (EG. 'ROUNDUP') IN ANY OF ITS REGISTERED FORMULAE, AT THE RECOMMENDED MAXIMUM RATE. REGULARLY REMOVE BY HAND, WEED GROWTH THAT MAY OCCUR OR RECUR THROUGHOUT GRASSED, PLANTED AND MULCHED AREAS. REMOVE WEED GROWTH FROM AN AREA 750MM DIAMETER AROUND THE BASE OF TREES IN GRASSED AREAS. CONTINUE ERADICATION THROUGHOUT THE COURSE OF THE WORKS AND DURING THE MAINTENANCE PERIOD.

SOIL SUBSIDENCE

ANY SOIL SUBSIDENCE OR EROSION WHICH MAY OCCUR AFTER THE SOIL FILLING AND PREPARATION OPERATIONS SHALL BE MADE GOOD BY THE LANDSCAPE CONTRACTOR AT NO COST TO THE CLIENT.



Pty Ltd. Use only figured dimensions. Any other required dimensions are to be referred to and supplied by the landscape architect. All discrepancies to be referred to the project manager and Arcadia Design Group Pty Ltd prior to construction. Ensure compliance with the Building Code of Australia and all relevant Australian Standards and Authority requirements.

G	SSDA MODIFICATION	28/01/26
F	SSDA MODIFICATION	23/01/26

Revision	Revision Description	Revision Date
----------	----------------------	---------------

Project

City Campus Student Accommodation Building B

16 Honeysuckle Drive,
Newcastle

Project Status
SSDA MODIFICATION

Client
THE UNIVERSITY OF
NEWCASTLE

Drawing No.
650

Drawing Name
LANDSCAPE SPECIFICATION

Job No.	23.948				
Issue	G				
Scale	@ A1				
0	1	2	3	4	5m

Sydney, Suite 70, Jones Bay Wharf, 26-32 Pirrama Road, Pyrmont NSW 2009
e sydney@arcadiala.com.au
t 02 8571 2900

ARCADIA