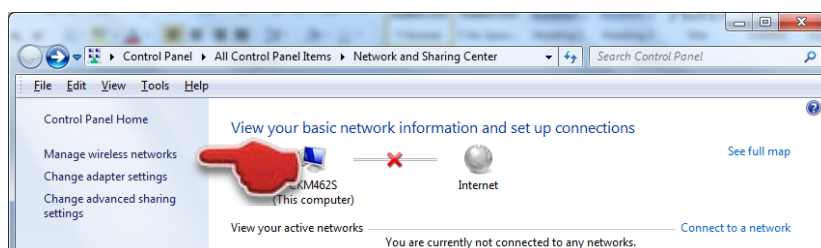


# Connecting your Windows 7 laptop to the University Wireless Network

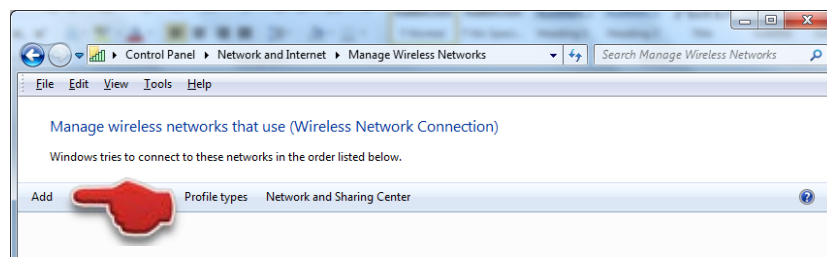
## Manual configuration

If your laptop did not automatically configure to the University wireless network, you will need to manually configure it by following the instructions below.

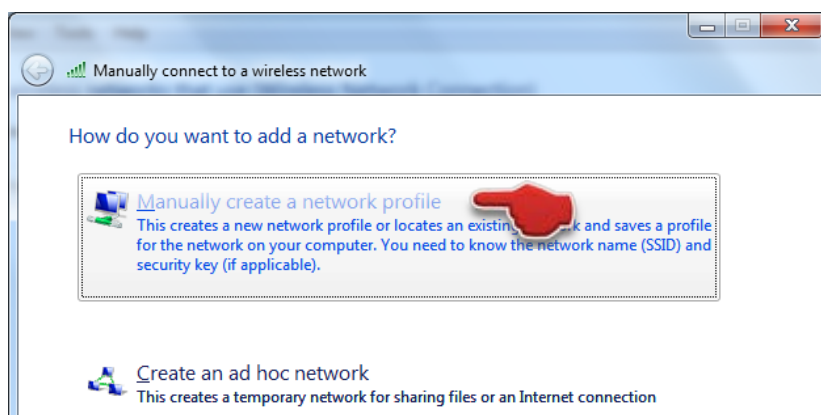
1. Open the 'Network and Sharing Center' control panel. Click on the 'Manage wireless networks' option.



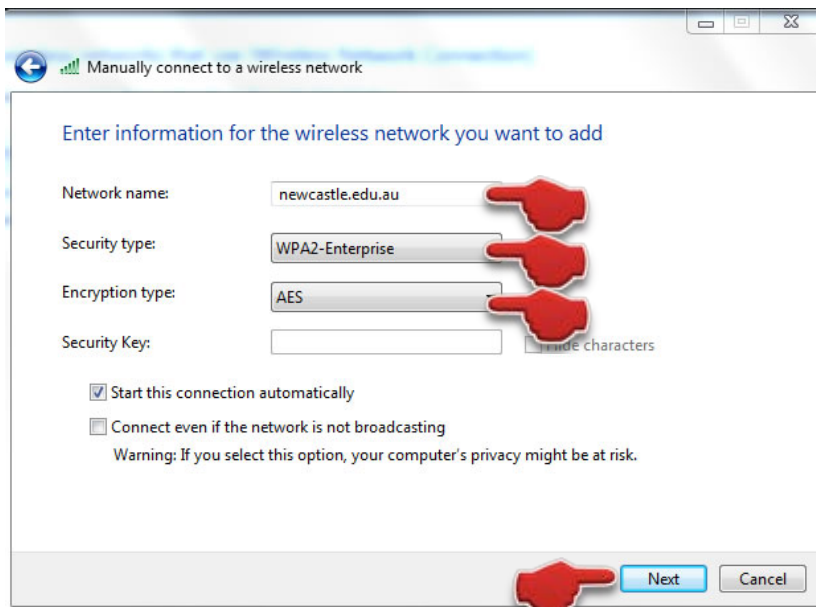
2. Click on the 'Add' option.



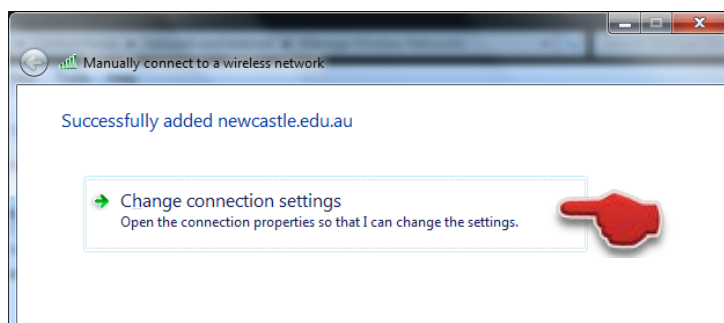
3. Click on the 'Manually create a network profile' option



4. Under the 'Enter information for the wireless network you want to add', set the following options:
  - Under the 'Network name', enter 'newcastle.edu.au'
  - Set the 'Security type' to: 'WPA2-Enterprise'
  - Set the 'Encryption type' to: 'AES'
5. Click on 'Next'



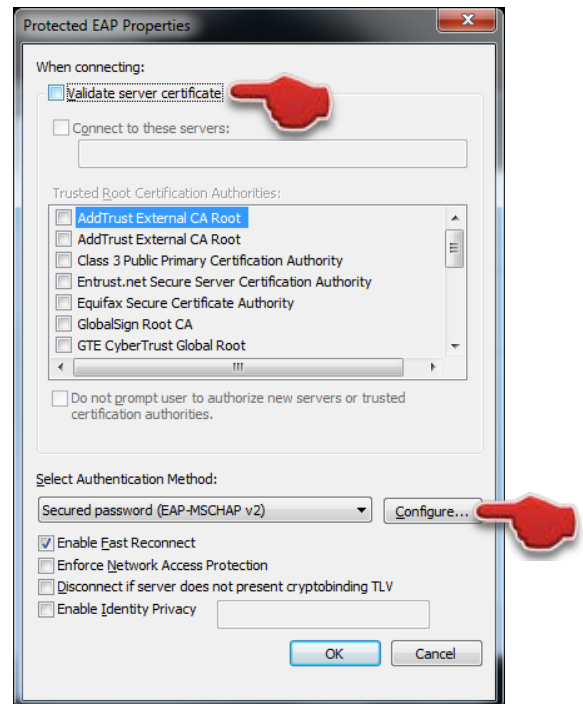
- 6. On the 'Successfully added newcastle.edu.au' window, click 'Change connection settings' option.



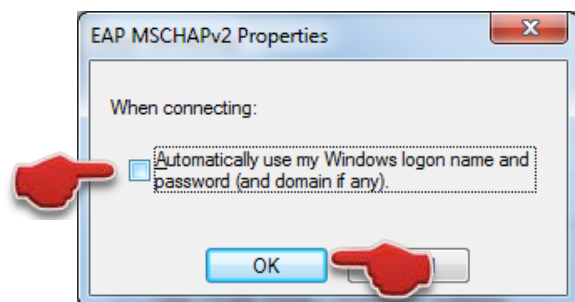
- 7. On the 'newcastle.edu.au Wireless Network Properties' window, click the 'Security' tab. Click on the 'Settings' button under the 'Choose a network authentication method'.



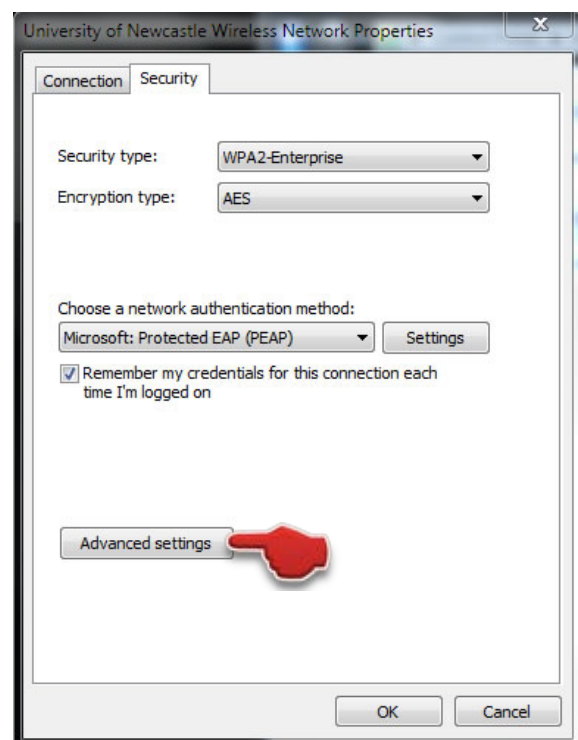
8. Untick the 'Validate server certificate' option.  
Click on the 'Configure' button under the 'Select Authentication Method'.



9. Untick the 'Automatically use my Windows logon name and password (and domain if any)' option.  
Click 'OK'.

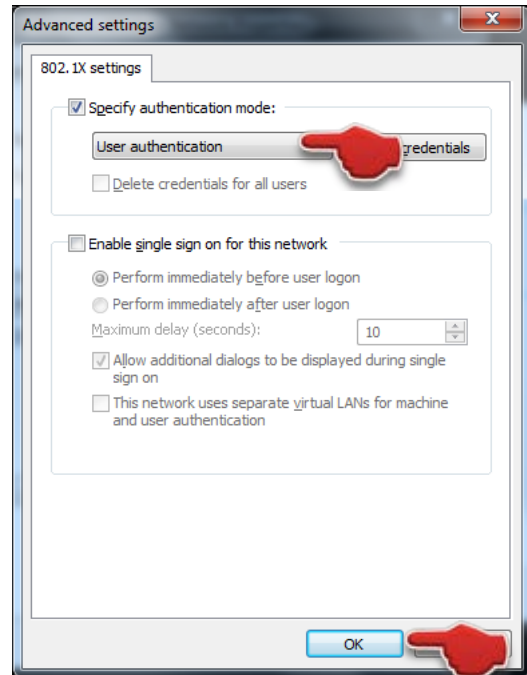


10. On the 'newcastle.edu.au Wireless Network Properties' window, click 'Advanced settings'.



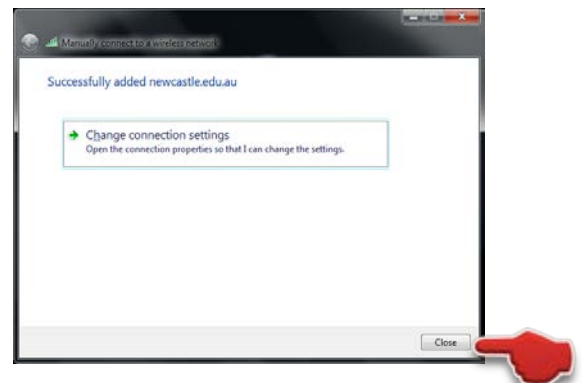
11. On the 'Advanced settings' window, under 'Specify authentication mode', select 'User authentication'.

Click 'OK'.

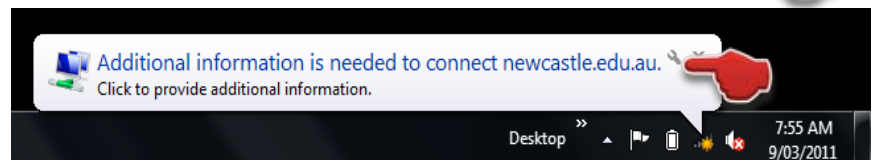


12. Click on the 'OK' button to close the 'newcastle.edu.au Wireless Network Properties' window.

Click 'Close' to close the 'Manually connect to a wireless network' window.



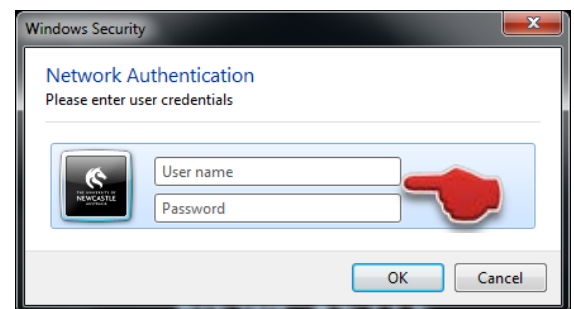
13. Click on the 'Additional information is needed to connect newcastle.edu.au' pop-up.



14. Enter your UNI-ID and password

For students, use your Student-ID (eg. c1234567) and myHub password.

For staff, use your Uni-ID (eg. abc123) and Internet password.



15. You can confirm the connection in the wireless connection window.

