

# THE GIFT

## YOU MAKE THE FUTURE BRIGHTER

Inside this edition:

- Support for the SNUG program helps families with sick kids
- Justice Clinic assists with Kathleen Folbigg's case
- Gifting Day delivers big community impact
- And much more...

**PHILANTHROPY NEWS**

How your generosity makes a difference

OCTOBER 2023 EDITION



THE UNIVERSITY OF  
NEWCASTLE  
AUSTRALIA

# MESSAGE OF APPRECIATION

Thank you for being part of our strong community of philanthropic supporters at the University of Newcastle, and for sharing our values of equity, excellence, engagement and sustainability.

Your generosity truly makes a positive difference, and I am fortunate to see the impact of your kindness every day. This edition of The Gift shares some of these great stories, like the Steve Waugh Foundation's support of the remarkable SNUG program. This is part of a holistic approach to assist young people with rare diseases and their families, allowing them to connect and grow.

I was proud to be part of our community who came together to support the important Gifting Day initiatives and causes this year. I am happy to share that we raised over \$230,000, and you can read more about the impact of your generosity in this edition.

Our University truly values sustainability, and I enjoyed learning more about Dr Irene Perez Lopez's research on the Hunter River, which aims to improve urban resilience to climate change.

I am also pleased to share how our University is providing real-world experience for students while helping to tackle injustice through the Justice Clinic, including working on high-profile matters such as the case of Kathleen Folbigg.

The positive impact of our community's support of scholarships is highlighted in the story of Luke, who received a Shaping Futures Scholarship, and through Belle's experience in the workforce following her BMG Indigenous Music Industry scholarship.

Please join me in wishing a fond farewell to our Chancellor, Paul Jeans, who has led our Council of the University for the past 10 years. It has been a privilege to work with Paul. I hope you enjoy reading his reflections on his time at the University.

Thank you for being part of our community of supporters. Thank you for your loyalty and commitment. As fellow donors, my wife Olga and I are proud to see the collective impact of our community's generosity and the difference it makes in the lives of others. Together, we are making the world a better place.



A handwritten signature in black ink, reading "A Zelinsky". The signature is fluid and cursive.

**Professor Alex Zelinsky AO**  
Vice-Chancellor and President  
The University of Newcastle

The University of Newcastle acknowledges the traditional custodians of the lands within our footprint areas: Awabakal, Darkinjung, Biripai, Worimi, Wonnarua, and Eora Nations. We also pay respect to the wisdom of our Elders past, present and emerging.

Overcoming the inequities of the past is integral to our core values. The University of Newcastle has a long and proud history as a leader amongst tertiary institutions in educational outcomes and employment opportunities for Aboriginal and Torres Strait Islander people.

# MA & MORLEY SCHOLARS RETURN TO CHINA



More than forty years since the chance meeting at West Lake in Hangzhou, China that sparked the friendship between Jack Ma and the Morley family, a new generation of globally-minded aspiring leaders from the University of Newcastle visited China for a unique cultural exchange.

Students from the 2021 and 2022 cohorts of the Ma & Morley Scholarship Program travelled to China in June for a long-anticipated visit to Shanghai, Beijing and Hangzhou. The 32 scholars toured fascinating sites including the Forbidden City and the Great Wall of China, shared cultural exchanges with local students and families, and gained valuable insights into life and work in China.



**“For me, this 12 day China immersion to Shanghai, Beijing and Hangzhou was completely transformative. A recurring theme across all aspects of the trip for me was**

**‘connection to people’. From the moment we got on the plane, or stepped foot on the Great Wall, to the time we visited Alibaba, everybody was so open, welcoming and friendly towards us scholars.”**

**Keely Dunning**  
2022 Ma & Morley Scholar

Thanks to the transformative friendship between Jack Ma and the Morley Family, and the generous scholarship program established by the Jack Ma Foundation, scholars (shown here at West Lake) enjoyed the China immersion and left inspired to continue their learning journey.



Scan the QR code to see behind-the-scenes of this life-changing trip

The Ma & Morley Scholarship Program was established in 2017 following a generous US\$20 million philanthropic commitment by the Jack Ma Foundation. It aims to inspire the next generation of globally aware and socially conscious Australian leaders through life-changing leadership and educational opportunities.

The Ma & Morley story began in 1980 when Ken and Judy Morley took their three children to China on an Australia China Friendship Society tour. Mr Morley became a highly influential figure in Mr Ma’s life, inspiring his yearning for social change. The China immersion aims to emulate the eye-opening and transformative experience Jack Ma had when visiting Newcastle for the first time in 1985.

To find out more about the Ma & Morley Scholarship Program, please visit [newcastle.edu.au/ma-morley](https://newcastle.edu.au/ma-morley)


# WORK INTEGRATED LEARNING SCHOLARSHIP LEADS TO A CAREER IN MUSIC



University wasn't originally part of Belle's plan after completing her HSC. But with a passion for the creative arts, she applied for the Bachelor of Visual Communication Design and began exploring opportunities and pathways she never knew existed.

As the inaugural recipient of the BMG Indigenous Scholarship in 2021, Belle completed her Work Integrated Learning experience with BMG in Sydney where she was instantly hooked on a career in the music industry.

"As an Aboriginal student with no musical talent I truly never imagined that there would be a way into the music industry for me. My time at BMG knocked down that wall and showed me that pathways do exist," says Belle.

 Scholarships are of enormous help for the professional development of students like Belle, opening doors to real-world industry experience that sets them on a successful career path beyond university.

## BMG'S VISION AND BELLE'S BIG BREAK

Through her creative contribution to the BMG team, in October 2022, Belle was offered a full-time role at BMG as a Creative Assistant where she gets to apply her visual communication skills daily – designing merchandise, creating cover art, managing social media and more.

**"I learned so many skills on my placement that have helped me in my day-to-day work at BMG. I'm excited to have the opportunity to work with the BMG team and the University of Newcastle to shape the scholarship experience for future recipients."**

**Belle Leonard**

BMG Creative Assistant, 2021 BMG Indigenous Scholarship recipient (BVisComDes, 2022)



Scan the QR code to watch Belle's day in the life as a Visual Communication Design alumna



**"BMG want to help drive change and close the gap in the music industry, and that begins by BMG taking an active lead in inspiring a new generation of First Nations music executives."**

**Heath Johns**

BMG President Australia, NZ, South-East Asia (MMktg, 2007; MBA, 2006)

To learn more about how you or your business can support students philanthropically through scholarships, please contact Lenita on 02 4921 8612 or email [donor-relations@newcastle.edu.au](mailto:donor-relations@newcastle.edu.au)

# GLIDING INTO A MORE SUSTAINABLE FUTURE



Will it, or won't it? The nail-biting task of designing and launching their own glider has gripped thousands of high school students over the years as part of the Science and Engineering Challenge. This exhilarating activity has had a sustainable makeover thanks to a special partnership with Boeing.

The *Flight!* activity enables students to explore concepts of flight and test their design skills. Support from Boeing means students now use biodegradable balsa wood instead of polystyrene foam to construct their gliders – adding another layer of learning to the thrilling experiment.

Students are challenged to build their model plane from balsa wood before putting it through a series of distance and accuracy tests. In 2023, *Flight!* has been run all over Australia, with students having the opportunity to explore aspects of STEM through this great activity.

Boeing's generous support for the Science and Engineering Challenge is a full-circle moment for University of Newcastle alumna and Senior Project Engineer at Boeing, Lorena Pais, who worked as a Challenge Ambassador during her time as a student at the University.

The Science and Engineering Challenge addresses the skills shortage in science and engineering by inspiring young people to study Science, Technology, Engineering and Mathematics (STEM) subjects in senior high school. The national program engages with more than 30,000 high school students each year, including high numbers of girls and students from regional, rural or remote areas, to inspire the next generation to pursue careers in STEM.

Boeing's generous support of *Flight!* and other University initiatives is helping to engage students of all ages to develop their interest and skills in STEM and preparing them to meet global challenges of the future.

“The Science and Engineering Challenge program has a special spot in my heart. It is a wonderful avenue for children to explore and learn, through play, difficult concepts that tend to be dry and boring when taught during school years.

As a female engineer it is an absolute honour to be able to support, participate and promote any STEM related activities to school aged children. Representation is so critical for engineering to continue to grow and develop new technologies that will affect all of humankind.”

Lorena Pais

BEng, 2009; BBiotech, 2004



Scan the QR code to watch *Flight!* in action

To learn more about how you or your business can philanthropically support an area you are passionate about, please contact Kate on 02 4921 8612 or email [philanthropy@newcastle.edu.au](mailto:philanthropy@newcastle.edu.au)

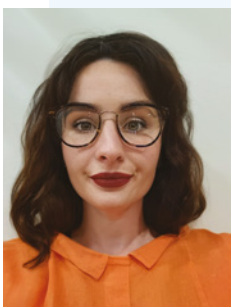
# GENEROSITY ADVANCING NURSING CAREERS AND ALCOHOL RESEARCH



Surrounded by nurses her whole life – both in her career and as a patient – the late Janice Leggett understood deeply the vital importance of nurses in our community.

In many ways, Janice Leggett was a woman before her time. Born in 1932, Janice moved to Newcastle as a young girl to live with her aunt and uncle, Margaret and Errol Allen. Following her schooling, she worked at Royal Newcastle Hospital, forging a successful career as an administrator where her intelligence and quick wit was valued by all. Janice faced many challenges in life; however, she was fiercely independent, sharing her positive outlook with everyone around her.

Janice established the Margaret and Errol Allen Nursing Scholarship in loving memory of her aunt and uncle, to generously support undergraduate nursing students experiencing financial hardship and graduate nurses to pursue additional training to progress their careers. Her life-changing decision to leave a gift in her Will to the scholarship fund will ensure more nurses receive the support they need to graduate or advance their skills.



**“The journey of undertaking a degree is indeed a long and financially testing one. I am eternally grateful and will never forget the difference this scholarship has made on my final year of becoming a Registered Nurse.”**

**Teagen McCarthy**  
2023 Recipient, Margaret and Errol Allen Nursing Scholarship

📺 Janice worked closely with nurses and hospital staff, like those shown here, while at the Royal Newcastle Hospital. Undated photo from Living Histories - [livinghistories.newcastle.edu.au](http://livinghistories.newcastle.edu.au)

“Janice deeply appreciated and admired the work of nurses. Supporting more nurses to complete or advance their training was her way of saying thank you and giving back to the profession that helped her live a great life,” says Janice’s friend, Jane Beverley.

Janice’s bequest will also provide vital support for the University’s research into the genetics and treatment precision of alcohol use problems through The Right Person, Right Treatment, Right Time project.

Led by Professor Frances Kay-Lambkin and Professor Chris Dayas, the project will combine the input of clinical and research experts as well as lived experience experts with genetic, clinical and health services data. This will allow for world-first implementation trials in alcohol use problems. Using data-driven decision making with real time testing and feedback, the research team will pursue improvements in the treatment precision and outcomes for alcohol use problems.

Nurses reach people across every stage of life, providing support and care when we need it most; and improvements in treatment for alcohol use problems will have a transformative impact on our society. We are so grateful to Janice for her kindness and generosity which will continue to benefit the lives of many for years to come.

---

To find out how you can make a lasting impact beyond your lifetime through a gift in your Will, please contact Catherine for a confidential discussion on 02 4921 8612 or email [bequests@newcastle.edu.au](mailto:bequests@newcastle.edu.au)

# POWERING THE WHEELS OF JUSTICE

True crime may be one of the world's most popular genres of entertainment but, for our students, the work to address injustice begins much closer to home.

Cold cases, missing persons, wrongful convictions, misclassifications of cause of death – for every question that remains unanswered in a police investigation or legal proceeding, there are victims and loved ones left searching for justice.

Led by world leading forensic anthropologist and criminologist Associate Professor, Xanthé Mallett, the Justice Clinic at the University of Newcastle is one of the few places they can turn for help.

Established in 2019 to support transparency and accountability in the justice system through education, advocacy and research, the Justice Clinic reviews cold cases and serious criminal matters where there may have been a miscarriage of justice.

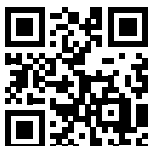


**“The people we work with are the most disadvantaged and they need a champion to fight their cause. We are teaching students the skills needed to encourage enquiry and help people desperate for justice.”**

**Associate Professor Xanthé Mallett**  
School of Law and Justice

The Clinic enables criminology and law students, as well as students from other allied disciplines including psychology, to experience first-hand how the cogs of justice turn: triaging cases, researching information, and working with authorities, experts and people directly impacted by the event. The opportunity to investigate claims, review evidence and campaign for change often provides a career-defining moment.

“Students spend years looking at theory but it’s not until they start Work Integrated Learning at the Justice Clinic that they see how it works in the real world. It’s a mind-blowing moment when they realise they can genuinely have a positive impact on someone’s life who has been through one of the worst experiences you can imagine,” says Associate Professor Xanthé Mallett.



Scan the QR code to learn more about the University’s Justice Clinic and the Folbigg case



Associate Professor Shaun McCarthy is one of the staff members supporting the important work of the Justice Clinic, which assists victims of crime and loved ones, while teaching students important skills.

## ALUMNI AND STUDENTS AT THE CENTRE OF RIGHTING WRONGS

Kathleen Folbigg’s pardon and release after 20 years in jail illustrates the tireless effort required by legal teams to battle for justice. Most recently led by lawyer and University of Newcastle alumna Rhanee Rego, many students assisted in Ms Folbigg’s legal case over the years under the supervision of University of Newcastle Legal Centre Director, Associate Professor Shaun McCarthy, who was Ms Folbigg’s instructing solicitor between 2013 and 2017.

**“Working on the Folbigg case taught me that there is tragedy and grief behind every legal context. That often gets lost in high profile cases. It was a salient lesson for me to learn so early in my career.”**

**Solicitor Kate Wielinga**  
LLBDipLegP, 2015; BComn, 2014

If you would like to support the Justice Clinic's important work to help address miscarriages of justice, please visit [newcastle.edu.au/justice-clinic-donation](http://newcastle.edu.au/justice-clinic-donation)

Also, look out for your invitation to a webinar on the Justice Clinic in early 2024.

# SNUG CELEBRATES 15 YEARS

During tough times, it can be of great comfort to know you are not alone in your struggles. Thanks to the incredible vision and generous support from the Steve Waugh Foundation, families from all over Australia caring for children with rare, chronic and complex health conditions have experienced the joy of lasting friendships, strong social support and greater family connection through the SNUG retreat program.

SNUG retreats are run by the Family Action Centre (FAC) at the University of Newcastle, a research, teaching and practice centre focused on strengthening family and community wellbeing. The Foundation has funded the program since 2009 – supporting more than 330 families and 725 children to enjoy a rare break from the complexities of daily life living with a rare disease.

## BUILDING FAMILY CONNECTION AND CELEBRATING EVERY CHILD

For children, going away on a SNUG retreat is a chance to have fun with their families and make friends with other children, often for the very first time. Siblings also get to join in the fun and create memories together while parents and carers access support in a safe and supportive environment alongside other families sharing a similar journey.



📹 SNUG retreats, such as the one shown here, celebrate all family members. Music and art therapy, outdoor fun and sensory play are always a big hit with the kids while parents enjoy connecting with other families in the 'same boat'.

## GROWING OUR COMMUNITY HEALTH RESOURCES

SNUG also provides students and early career health professionals with opportunities to connect with and learn from families while supporting the Family Action Centre as trained volunteers. The program has trained more than 200 volunteers over 15 years – many of whom are now applying their skills and knowledge to help more families and children with rare health conditions access better integrated treatment, resources and support in the community.



“We are extremely proud to have supported the SNUG program since its launch in 2009. Our shared dedication for connecting and creating support networks has resulted in positive experiences and memories for hundreds of families across Australia. We are proud of the work we have accomplished over the last 15 years together with the SNUG team.”

Steve Waugh Foundation







## SNUG IS ONE-OF-A-KIND

1,287 participants

200 trained volunteers

725 children

66 retreats over  
15 years

335 families

## SNUG AT HOME

Thanks to a generous donation from the Woodend Foundation, families who attend SNUG can maintain social connections and support after the retreats. COVID brought into sharp relief the mental and social isolation that SNUG families experience. SNUG at Home was developed to provide families across Australia with appropriate activities that allow an opportunity for connection and bonding with other families between retreats.

 Lynette Waugh OAM and Steve Waugh AO with children at one of the SNUG retreats.



“I love SNUG camp!

We get to do all these amazing activities and I've made a lot of friends.

Before SNUG camp, I never met anyone else with Williams syndrome. Now I have so many friends and I love all the families. School has been a rough time for me, but it is nice to have friends that I can just be myself with. We talk to each other about things we are struggling with. I wish I could stay at SNUG camp forever.”

Cadence Lindsay

“For the first time I was able to work out what was Williams syndrome and what was Cadence. It felt so good to learn that we hadn't been doing everything wrong. We wouldn't know half the stuff we know about Williams syndrome without that first SNUG camp.

Thank you to the Steve Waugh Foundation. It's hard to put into words how much SNUG has helped us. For other families to experience this would be fantastic.”

Melissa Lindsay, Cadence's mother

Over 80% of parents learned about new therapies, services and supports through attending a SNUG retreat.

Thanks to the incredible vision and generous support from the Steve Waugh Foundation (almost \$3 million since 2009), families from all over Australia caring for children with rare, chronic and complex health conditions have experienced the joy of lasting friendships, strong social support and greater family connection through the SNUG retreat program. We are also very grateful to the Woodend Foundation, for enabling SNUG families to connect between retreats.

To learn more about the SNUG program, please go to [newcastle.edu.au/snug](http://newcastle.edu.au/snug)

# NEW RESEARCH TAPS INTO THE WISDOM OF WATER



**From too much to not enough – water extremes like floods and droughts are just some of the ways climate risks are impacting our cities and regions.**

Researchers at the University of Newcastle are hoping to tap into the wisdom of the Hunter River, the largest coastal catchment in NSW, to re-think the design of estuary cities, like Newcastle, in the climate century.

Led by College of Engineering, Science and Environment Senior Lecturer, Dr Irene Perez Lopez, the research series will look at how the Hunter River basin and estuary have changed over time. The goal is to identify key features that will allow us to live well while reducing flood and other climate-associated risks in future.



**“We are all connected by our relationships with water. From the Indigenous cultural practices and water management, to architects, urban and infrastructure designers that shape our cities and regions today.”**

**Dr Perez Lopez**  
Senior Lecturer, School of Architecture and Built Environment

*Learning from the past to lead an emerging future: researchers will study changes in the Hunter River basin and estuary by documenting and drawing pre-colonial water systems and identifying current urban and environmental threats, to lead to a more sustainable and climate resilient future.*

“In many ways the climate crisis is a water crisis. As we enter the next decade, there are big questions to answer around how we can work with our waterways and natural systems instead of fighting against them. We need research, community and Indigenous knowledge, and engagement to support these decisions.”

Through her research, Dr Perez Lopez hopes to inform more evidence-based design guidelines that take advantage of unique estuary characteristics to create more sustainable, secure, resilient and liveable estuary cities.

What secrets can the Hunter River basin and estuary reveal about the future of climate resilience and sustainability for our region and communities around the world?

By supporting this research, you can help to change the way we approach some of the greatest environmental, social and economic challenges of our time – climate adaptation and our relationship with water.

If you would like to contribute to extend this important research, please visit [newcastle.edu.au/river-research-donation](https://newcastle.edu.au/river-research-donation)

# SHAPING A POSITIVE FUTURE FOR LGBTQIA+ STUDENTS



📷 The University of Newcastle provides a unique platform for LGBTQIA+ students and staff, helping committed students like Luke to feel comfortable and safe in expressing their identities and pursuing their study and career goals.

With support from many generous donors to the 2023 LGBTQIA+ Shaping Futures Scholarship, Bachelor of Social Work (honours) student Luke is sharing his unique perspectives to help others.

As a transgender man and young carer, Luke has faced many challenges on his path to become a social worker.

“My caring responsibilities fluctuate day-to-day and often take a lot of time. Going on student placement, for example, really challenges my ability to meet all the needs of my family. With support from the Shaping Futures Scholarship and University staff, I have been able to engage more actively with my coursework and cohort, and I have more time to concentrate on my studies.

I am deeply appreciative of the financial support I’ve received on my education and professional development journey,” says Luke.

As a future social worker, Luke hopes to be able to support other LGBTQIA+ students to pursue their education goals and address the significant gap in care for the mental health and wellbeing of the LGBTQIA+ community on the Central Coast.

“It has been really rewarding being able to integrate and share my experiences as a transgender man into my studies, exploring many questions and challenging preconceptions in a variety of relevant social work topics.

In future, I would like to pursue research to address and improve the mental health and wellbeing of those who specifically identify as transgender or gender diverse. Ultimately, I would like to set up a practice here on the Central Coast so many young adults don’t have to travel significant distances for gender affirming care.”

**Luke**

Bachelor of Social Work (honours)  
Shaping Futures Scholarship recipient



📷 The University celebrates International Day Against Homophobia, Biphobia, Intersexism and Transphobia.

If you are interested in establishing or supporting an undergraduate or PhD scholarship, please contact Lenita on 02 4921 8612 or email [donor-relations@newcastle.edu.au](mailto:donor-relations@newcastle.edu.au)

# THANK YOU FOR SHAPING A BETTER TOMORROW

Our incredible University of Newcastle community came together on 6 September to shape a better, fairer and more sustainable tomorrow through our 2023 Gifting Day.

The remarkable generosity of more than 600 donors and ambassadors from seven countries saw over \$230,000 raised in support of seven life-changing initiatives.

A special thank you to our matched donors who helped amplify the generosity of our community to make an even bigger impact: Google, RUN DIPG, Lisa McGuigan Wines, Newcastle Permanent and generous anonymous donors.



Scan the QR code to watch some of the Gifting Day fun

Hundreds of students, staff, alumni and members of our community enjoyed Gifting Day celebrations at our Callaghan, NUspace and Ourimbah campuses, with live music, great food, warm smiles and life-sized foosball.

# GIFTING DAY 2023 IMPACT

One generous community, seven ways to make an impact:

## **OUTREACH FOR WOMEN IN THE HUNTER EXPERIENCING HOMELESSNESS**

\$23,747 raised to support women in the Hunter experiencing homelessness.

Thank you for your generosity in helping us roll out a trauma-informed approach to assertive outreach – connecting women experiencing homelessness with crucial support services.

## **MARK HUGHES FOUNDATION CENTRE FOR BRAIN CANCER RESEARCH**

\$18,418 raised to advance treatments for children with brain cancer.

Thank you for supporting critical research that is providing much-needed hope for kids and their families around Australia and the world.

## **SCIENCE AND ENGINEERING CHALLENGE**

\$16,111 raised to support Australia's next generation of ground-breaking scientists and engineers.

Thank you for helping to inspire students from all backgrounds into future STEM careers, creating a more diverse, sustainably-minded and progressive future for us all.

## **ALUMNI HOUSE**

\$54,235 raised to help bring this amazing new space to life.

Thank you for sharing in the vision to create a space to bring our alumni and community together to connect, collaborate and share opportunities and learning across the world.

## **MALIYAN INDIGENOUS STUDENT LEADERSHIP PROGRAM**

\$31,171 raised to support our Aboriginal and Torres Strait Islander health care leaders of tomorrow.

Thank you for supporting this transformative leadership program which will help students develop their skills to deliver the best possible health outcomes for Indigenous patients and their communities.

## **SHAPING FUTURES SCHOLARSHIPS**

\$47,325 raised to support students through Shaping Futures Scholarships.

Thank you for supporting students to overcome unfair obstacles and achieve their full potential – quite literally altering the course of a person's life.



## **2NURFM COMMUNITY RADIO STATION**

\$37,295 raised to support 2NURFM Community Radio to continue as an authentic voice for our community.

Thank you for ensuring 2NURFM can keep delivering high-quality local news and entertainment for years to come.

## **AREA OF GREATEST NEED**

\$3,952 to support where it is most critical across all the Gifting Day projects.

Thank you for choosing to help shape a better tomorrow by connecting our communities, championing opportunities for all, driving life-changing research and creating a sustainable tomorrow.

**Thank you to everyone who generously donated to support our Gifting Day causes for 2023. Your gift will make a meaningful difference to people in our communities and the world.**

---

We are so grateful to our community for coming together to shape a better tomorrow. To read more about Gifting Day, please go to [newcastle.edu.au/gifting-day](https://newcastle.edu.au/gifting-day)

# BRAIN CANCER TEAM MARKS SUCCESSFUL FIRST YEAR

As Australia's best experts work harder than ever before to find a cure and give hope to everyone affected by brain cancer, we look back on a huge first year for the Mark Hughes Foundation Centre (MHF Centre) for Brain Cancer Research at the University of Newcastle.

The Mark Hughes Foundation has generously pledged more than \$16 million over five years to the University in support of the Centre, with the University contributing a further \$10 million. This is also supported by donations from our generous community.

## SYMPOSIUM TURBOCHARGES BRAIN CANCER COLLABORATION

Experts from across the nation gathered earlier this year for the inaugural Mark Hughes Foundation Centre for Brain Cancer Research Symposium. Together they explored the Centre's six research streams and identified more ways to collaborate and accelerate the work of the Centre. Discussion of the race to develop an early detection test for brain cancer by identifying blood markers was a highlight.

## NEW COORDINATORS CHAMPION PATIENT CARE

The Mark Hughes Foundation also funded the integration of Brain Cancer Care Coordinators into the MHF Centre for Brain Cancer Research, creating joint nursing appointments between the University and area health services. The Centre's vision in coming years (after testing the model and seeking ongoing support from government) is to connect every brain cancer patient in Australia with a care coordinator so as many people as possible can benefit from the Centre's leading research insights and best practice.



**"We have assembled a great team who are uniting clinicians and scientists across the country to share resources, develop better treatments and improve outcomes for brain**

**cancer patients and their families across Australia. Thank you for your support."**

**Professor Mike Fay**

Foundation MHF Chair in Brain Cancer  
Director, MHF Centre for Brain Cancer Research



Mark Hughes Foundation Brain Cancer Care Coordinators (Elise Greedy, Natasha Malcolm and Nicole Allen) provide essential support for brain cancer patients, their families and carers, and help connect best practice research with models of care that can be shared.

## SUPPORTERS RALLY BEHIND THE NATIONAL TEAM

Teamwork is the key to building a national program to advance research to help people all over Australia affected by brain cancer. The MHF Centre for Brain Cancer Research is grateful for its supporters near and far, including the Rotary Club of Rockhampton North, who generously donated \$35,000 to support brain cancer research through the Centre. The Rotary Club has been raising funds in Queensland for national research in cancer care for over 15 years, resulting in increased cancer treatment options for patients in regional settings.

The Mark Hughes Foundation Centre for Brain Cancer Research at the University of Newcastle is driving critical research, education, and health care improvements at a national scale for brain cancer patients, their families and carers, and health professionals. The Centre's six research streams ensure a holistic approach and rapid translation to clinical practice:

- Patient Experience
- Brain Cancer Imaging
- Blood Based Biomarkers
- Experimental Therapeutics
- Translational Neuroscience
- Paediatric Brain Cancer

If you would like to support an area of research that is important to you and help save and improve lives, please contact Kate on 02 4921 8612 or email [philanthropy@newcastle.edu.au](mailto:philanthropy@newcastle.edu.au)

# FAREWELL FROM THE CHANCELLOR

University Chancellor, Mr Paul Jeans, will retire at the end of the year following more than 10 years at the helm of our University Council. He shares his reflections on the generosity of our community:

Philanthropy is incredibly important to our University. It has been gratifying to see philanthropic support more than quadruple in the past decade, driven not only by some very large gifts but also by a significant increase in the number of philanthropic supporters including many generous staff and alumni.

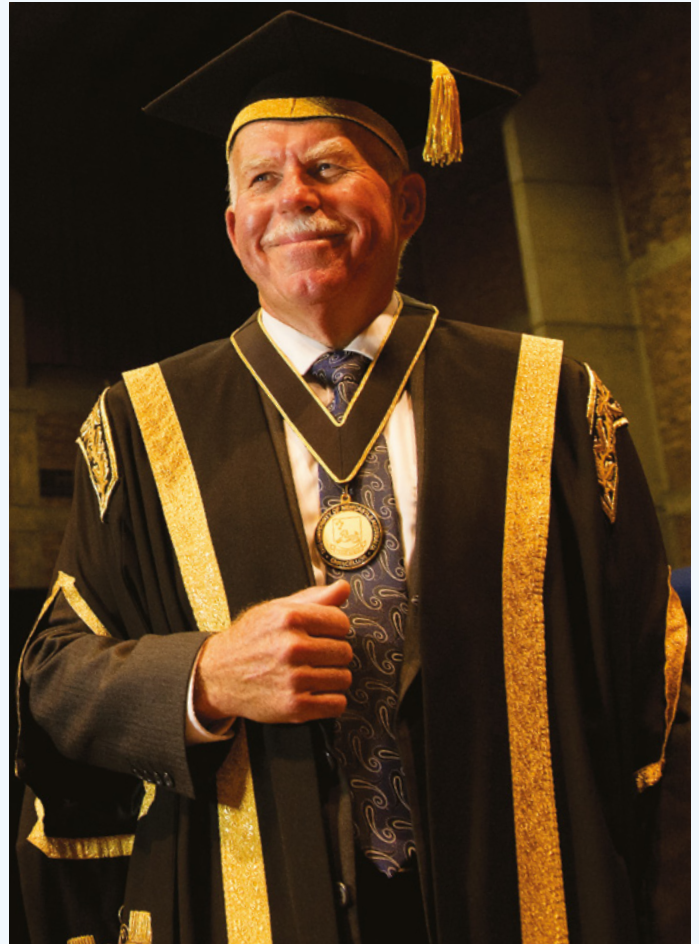
Equity has always been at the core of our University's ethos. Through scholarships and long-standing pathway programs we have been able to help many thousands of students attain their full potential. In fact, our Open Foundation program will celebrate 50 years next year – it's Australia's largest and oldest University pathway program and continues to change lives. One of my greatest pleasures over the past decade has been to hear these students speak at graduation ceremonies, sharing their incredible journeys to become major contributors to society.

Philanthropy allows fundamental research to be undertaken on some of our greatest challenges, often kickstarting important work that is difficult to fund through other sources. It also provides the continuity of support to ensure research delivers maximum community impact.

Of course, philanthropy is often a very personal decision, as it is with my own family. A way to show appreciation for what the University has done and promises to do in the future; to remember a loved one in a way that benefits others; to improve the prospects for our regions. It speaks to who you are.



Chancellor Mr Paul Jeans speaking with donors at the 2023 Bequest Morning Tea.



Chancellor Mr Paul Jeans shares his gratitude for our philanthropic supporters ahead of his retirement.

I have been privileged to be Chancellor for over a decade and it is now time for a change. I'll continue as Chair of the Australian Genomic Cancer Medicine Centre (Omico) and may well become involved in other activities. I'll certainly catch a few more fish.

Thank you for your support over the past decade. I carry with me a deep appreciation for the life-changing advances and community impact your generosity has helped to achieve.

Mr Paul Jeans  
Chancellor  
The University of Newcastle

If you would like to find a project to support that aligns with your values, please contact Kate on 02 4921 8612, email [philanthropy@newcastle.edu.au](mailto:philanthropy@newcastle.edu.au) or go to [newcastle.edu.au/donate](http://newcastle.edu.au/donate)

# WHY I DONATE



📷 Nicholas Zdenkowski (BMed, 2005; GC Clin Ep, 2013; GD Clin Ep, 2014), Wren Zdenkowski, Andrew Zdenkowski, Sue Outram (PhD, 2002), and Mikhail Zdenkowski (BEnScMgt, 2012); inset: Matthew Zdenkowski (BSc (Aviation), 1992; DipAvSc, 1991).

We chose to donate through the University of Newcastle because of our close association with both Newcastle and the University.

Whilst I grew up in Western Sydney and studied medicine at the University of Sydney, Sue grew up in Newcastle and we have now lived here for over 40 years. Our three sons studied at the University and are very successful in their chosen careers. Matthew graduated in Aviation Science; Nicholas in Medicine and Mikhail in Environmental Science and Management. Sue worked as an academic in both the Faculty of Nursing and the Faculty of Health and Medicine for 25 years, teaching students in the health professions. Sue also completed her PhD through the University of Newcastle.

We are both from working class backgrounds (Sue was first in family to attend university) and benefitted greatly from free university education in the 1970s – no debt at graduation! We are very aware of economic hurdles to tertiary education, and although we had to work to support ourselves during our studies, we feel deeply privileged to have had this assistance.

We have a long-held passion for action to protect our environment with many decades of supporting organisations such as the Australian Conservation Foundation, World Wildlife Fund, Wilderness Society and more recently Doctors for the Environment. Our environment is sadly undervalued and its critical importance for our health and wellbeing is poorly appreciated.

We considered supporting students in Medicine, given our careers in this area. However, we decided the importance of finding effective strategies to avoid adverse, possibly catastrophic, environmental damage, which includes public health, is paramount. The outcomes for our children and grandchildren, and indeed ALL children of the future make this a priority.

We hope that our passion can be translated into meaningful outcomes through our donation, and that we can assist students financially to be able to study in this field of environmental sustainability, perhaps to complete a project that they may not have had funds to progress.

We also hope our passion may inspire students to choose and value projects within the area of sustainability, and that others in the community who are in a position to do so might also consider creating a scholarship.

#### Andrew Zdenkowski and Sue Outram (PhD, 2002)

Donors to The Andrew Zdenkowski & Sue Outram Environmental Sustainability Scholarship

## WHAT'S YOUR STORY?

Everyone has a unique story about why they donate through the University of Newcastle, and we would love to hear yours! Please call 02 4921 8612 or email [donor-relations@newcastle.edu.au](mailto:donor-relations@newcastle.edu.au)

## HOW TO MAKE A GIFT

### 📺 DONATE ONLINE

At our secure website:  
[newcastle.edu.au/donate](http://newcastle.edu.au/donate)

### ☎ TELEPHONE

Call us on: +61 2 4921 8612

### ✉ EMAIL

Contact us at:  
[donor-relations@newcastle.edu.au](mailto:donor-relations@newcastle.edu.au)

### ✉ MAIL YOUR CHEQUE TO:

Office of Alumni and Philanthropy  
IDC Building, University Drive  
Callaghan, NSW 2308

### ➤ IF YOU WOULD PREFER TO RECEIVE THE GIFT BY EMAIL

Please contact us at  
[donor-relations@newcastle.edu.au](mailto:donor-relations@newcastle.edu.au)

Tax deductibility: Donations of \$2 or more to the University of Newcastle may be eligible deductions for income tax purposes under the Income Tax Act 1997. Privacy: The University of Newcastle complies with the Privacy and Personal Information Protection Act 1998. Your personal information will be securely stored.

UON 2023 1005 | 20231009-16:14 | CRICOS Provider 001093