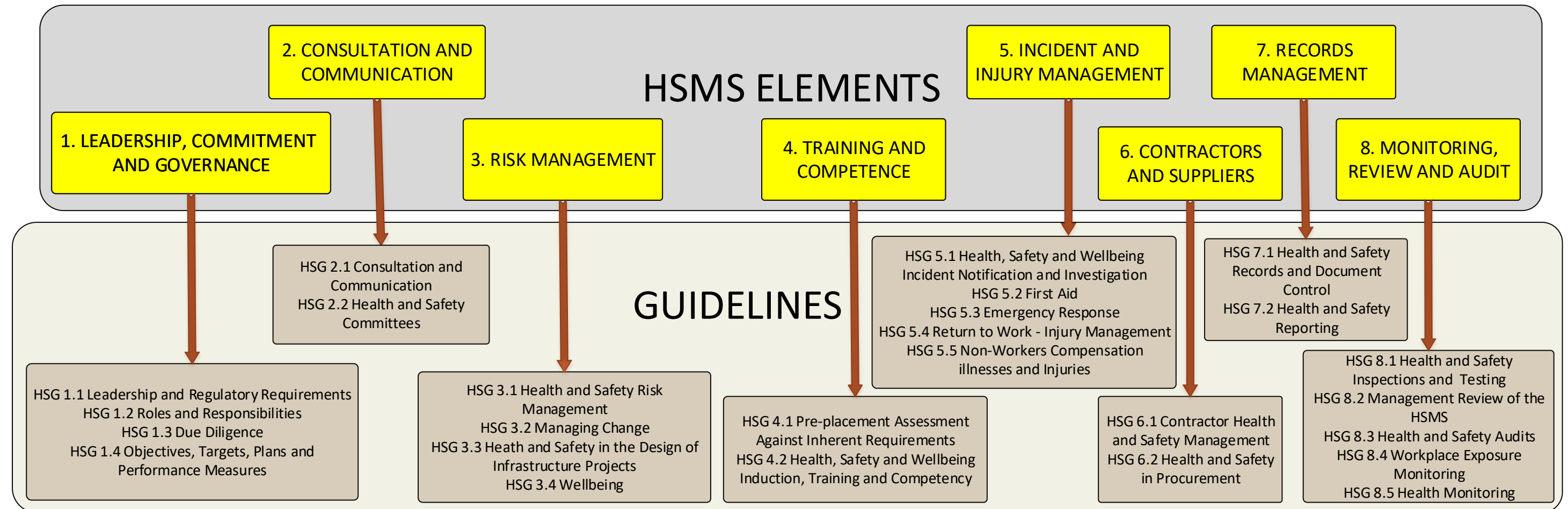


# Health and Safety Management System Framework

This framework outlines the Health and Safety Management System Policy, Elements, related Guidelines, and requirements for managing Key Risk Areas at the University of Newcastle

## Work Health and Safety Policy



## Key Risk Areas (KRAs) and Requirements

### KRA 1: Hazards and risks related to Research and Teaching

- KRA 1.1 Hazardous Substances & Dangerous goods
- KRA 1.2 Genetically Modified Organisms & Hazardous Biological Substances
- KRA 1.3 Fieldwork
- KRA 1.4 Plant and Equipment
- KRA 1.5 Personal Protective Equipment (PPE)
- KRA 1.6 Noise Management
- KRA 1.7 Laboratory Safety
- KRA 1.8 Biological Hazards & Infection Control
- KRA 1.9 Radiation Management
- KRA 1.10 Scuba Diving/Water Based Activities
- KRA 1.11 Remotely Piloted Aircraft (Drone) use and operation
- KRA 1.12 Development of Standard Operating Procedures (DRAFT)

### KRA 2: Hazards and risks related to University Environment

- KRA 2.1 Manual Handling and Ergonomics
- KRA 2.2 Smoke-Free University
- KRA 2.3 Working from Home
- KRA 2.4 Working Alone or in Isolated Environments
- KRA 2.5 Travelling on University Business
- KRA 2.6 Managing Behavioural Risks
- KRA 2.7 Campus Environment
- KRA 2.8 Supporting a Healthy University
- KRA 2.9 Employee Assistance Program (EAP)
- KRA 2.10 Animals on Campus
- KRA 2.11 Managing psychosocial risks
- KRA 2.12 University Activities involving Working with Animals (DRAFT)

### KRA 3: Hazards and risks related to construction & maintenance activities

- KRA 3.1 Working at Heights
- KRA 3.2 Working in Confined Spaces
- KRA 3.3 Asbestos Management
- KRA 3.4 Excavation and Demolition
- KRA 3.5 Hot Work (including welding)
- KRA 3.6 Electrical Safety and Isolation
- KRA 3.7 Testing & Tagging
- KRA 3.8 Travelling Crane Procedure
- KRA 3.9 Pallet & Steel Storage Racking