

# Eduroam Setup Guide

## Microsoft Windows XP

This guide provides instructions for setting up wireless connection to Eduroam using Microsoft Windows XP. The SecureW2 client is also suitable for use with Microsoft Vista.

- Section 1: Preparation**
- Section 2: Setting up the Eduroam Wireless Network**
- Section 3: Connecting to Eduroam**

NOTE: University of Newcastle staff and students must not use the Eduroam wireless network while located at any of the University campuses where connection to the **newcastle.edu.au** network is available.

## Section 1: Preparation

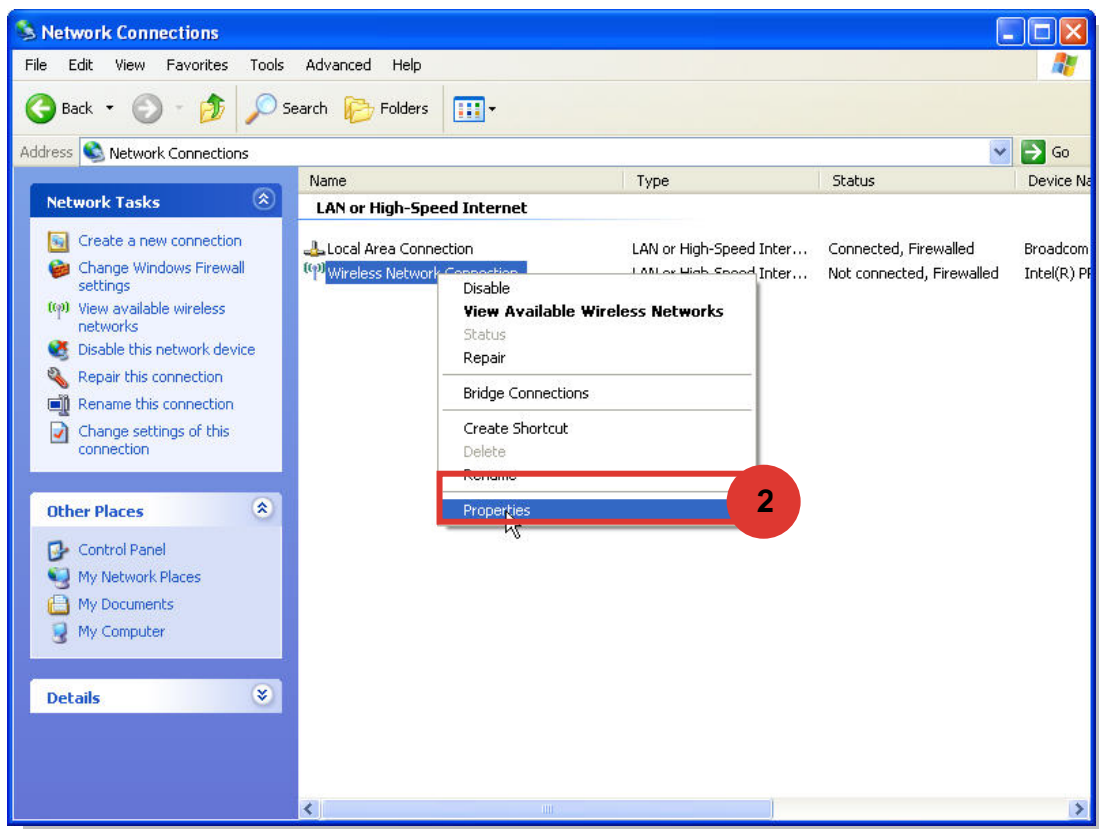
Before using Eduroam SecureW2 client must be installed.



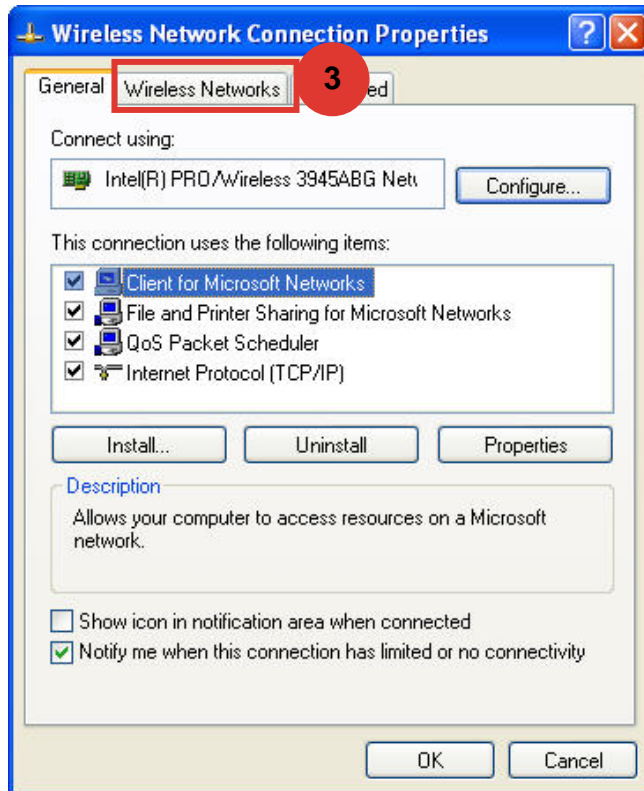
Click the button to download SecureW2 Client for Microsoft Windows XP (1070 KB)  
Run the installer and follow the prompts

## Section 2: Setting up the Eduroam Wireless Network

- 1 Open up your network connections by clicking **Start -> Control Panel -> Network Connections**
- 2 Right click on **Wireless Network Connection** and click **Properties**

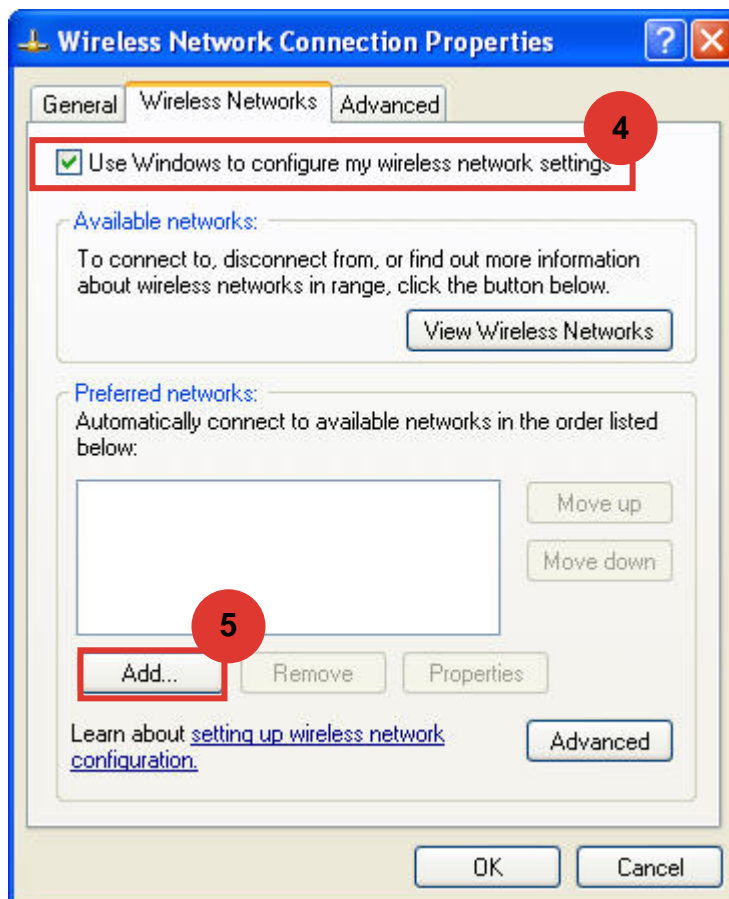


- 3 Click on **Wireless Networks**.

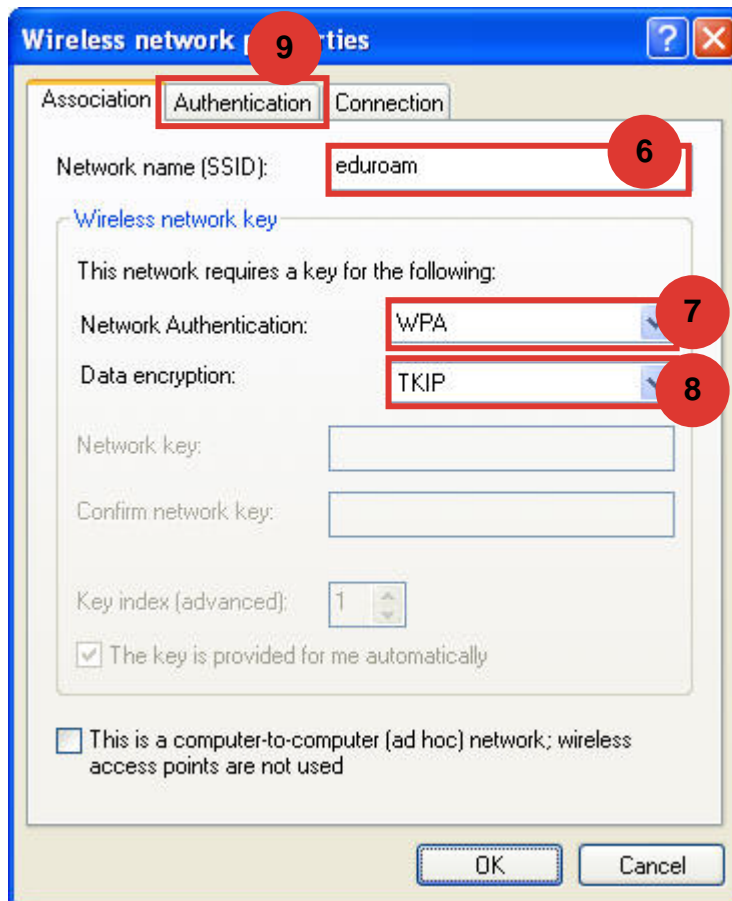


- 4 Ensure **Use Windows to configure my wireless network settings** is ticked.

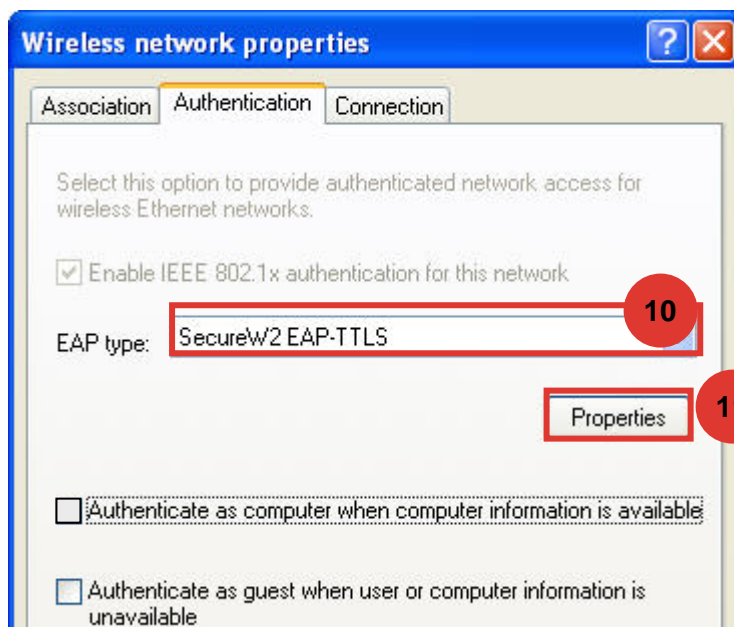
- 5 Click **Add**.



- 6 Enter **eduroam** as the SSID
- 7 Network Authentication: **WPA**
- 8 Data encryption: **TKIP**
- 9 Click on the **Authentication** tab



- 10 Set EAP type to **SecureW2 EAP-TTLS**
- 11 Click **Properties**

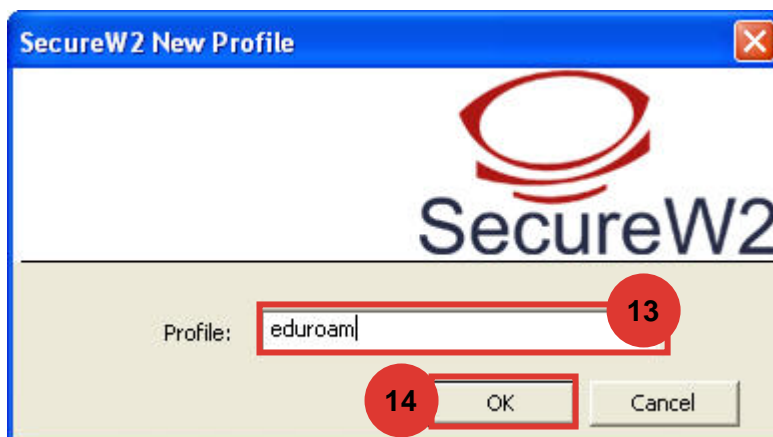


- 12 Click **New**



- 13 Enter **Eduroam** as the Profile ID

- 14 Click **OK**



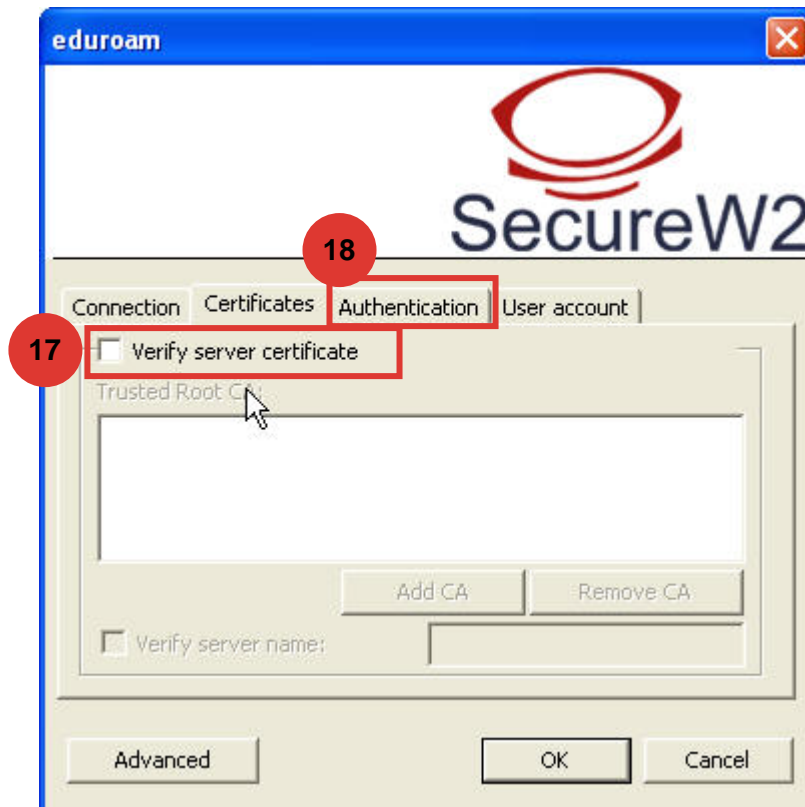
- 15 Ensure **Use alternate outer identity** is *not* ticked

- 16 Click on the **Certificates** tab



17 Ensure **Verify server certificates** is *not* ticked

18 Click on the **Authentication** tab

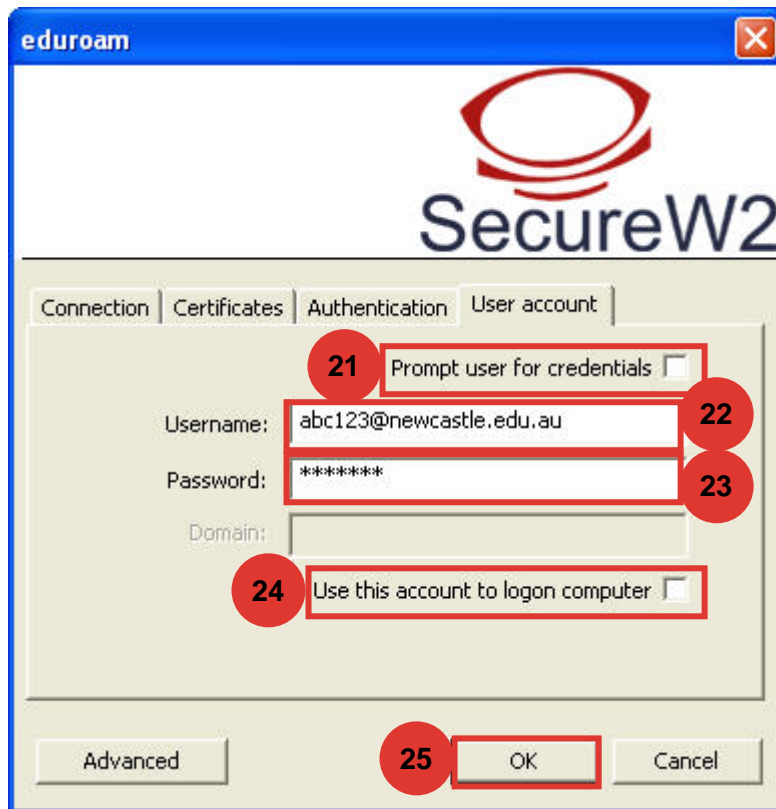


19 Select Authentication Method: **PAP**

20 Click on the **User account** tab

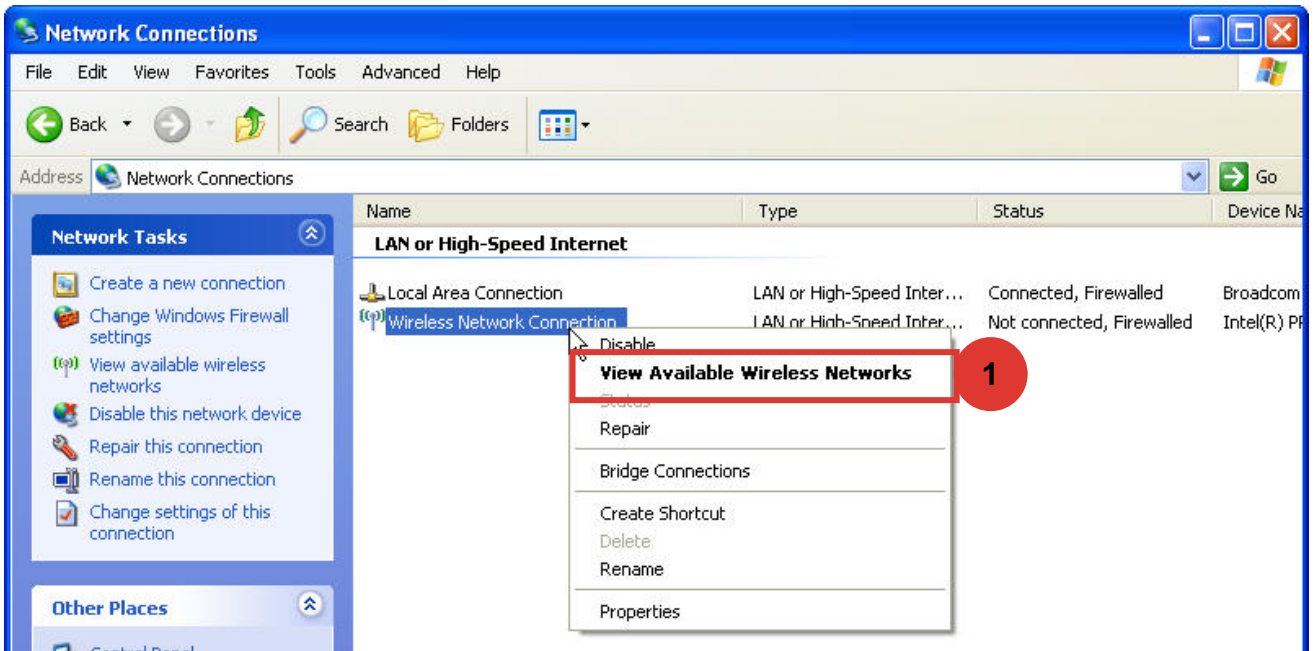


- 21 Ensure **Prompt user for credentials** is *not* ticked
- 22 Enter your username@newcastle.edu.au
- 23 Enter your password
- 24 Ensure **Use this account to logon computer** is not ticked
- 25 Click **OK**
- 26 Continue clicking **OK** until you are back at Network Connections.



### Section 3: Connecting to Eduroam

- 1 Right click on **Wireless Network Connection** and click on **View Available Wireless Networks**.



- 2 Select the **eduroam** network.

- 3 Click **Connect**

