



THE UNIVERSITY OF
NEWCASTLE
AUSTRALIA

17000
TRIPLE ZERO

Connecting to Eduroam With Mac OSX 10.4 (Tiger)

NOTE: University of Newcastle staff and students must not use the eduroam wireless network while located at any of the University campuses where connection to the newcastle.edu.au network is available.

Connecting to eduroam with Mac OSX 10.4

Before you start, in the Airport menu make sure Airport is off.

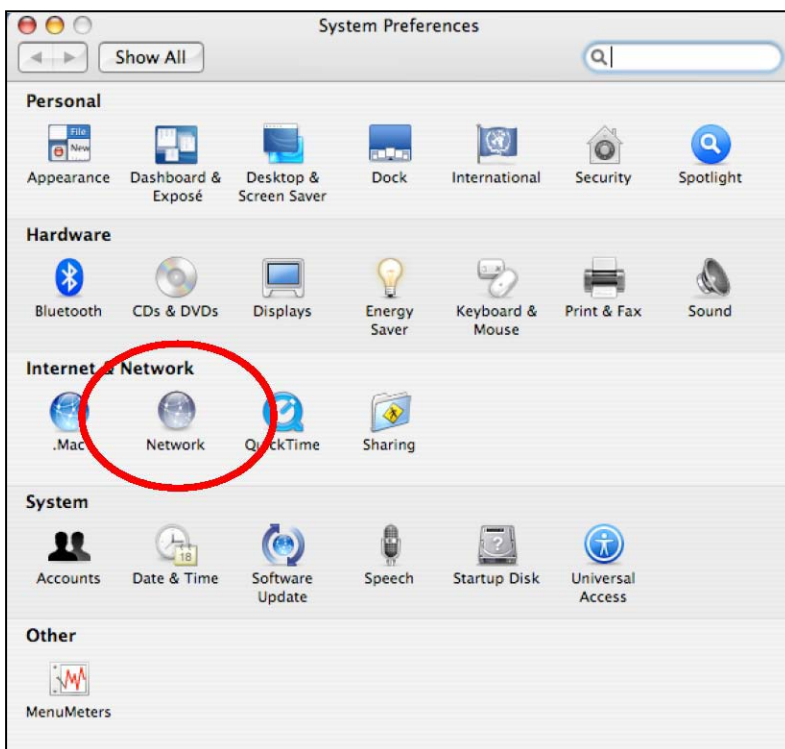
STEP 1:

From the **Apple** menu, select **System Preferences**



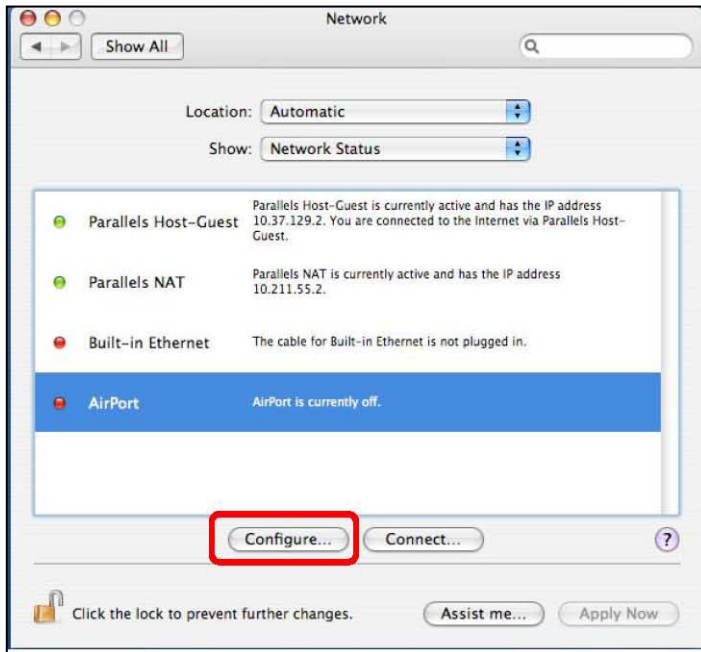
STEP 2:

Select the **Network** icon



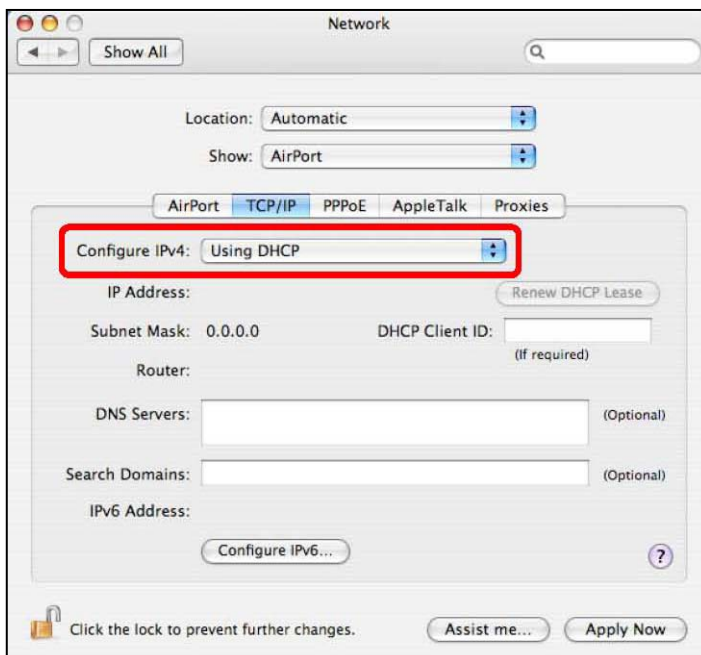
STEP 3:

Select the **Airport** item and click the **Configure** button



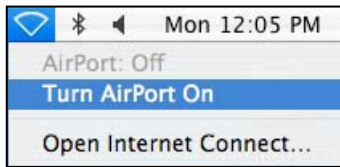
STEP 4:

1. Click on the **TCP/IP** tab near the top of the preferences page
2. From the **Configure IPv4** drop down box select **Using DHCP**, click **Apply Now**, and then close **System Preferences**
3. If **Using DHCP** is already selected, close **System Preferences**.



STEP 5:

From the **Airport** menu at the top of your display select **Turn Airport On**



STEP 6:

Open **Internet Connect**

From the **Airport** menu

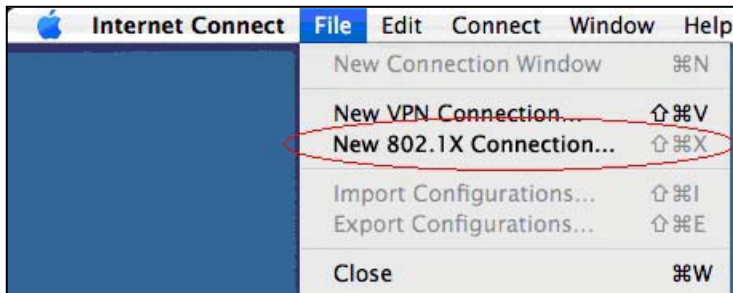


STEP 7:

This step enables the 802.1x settings

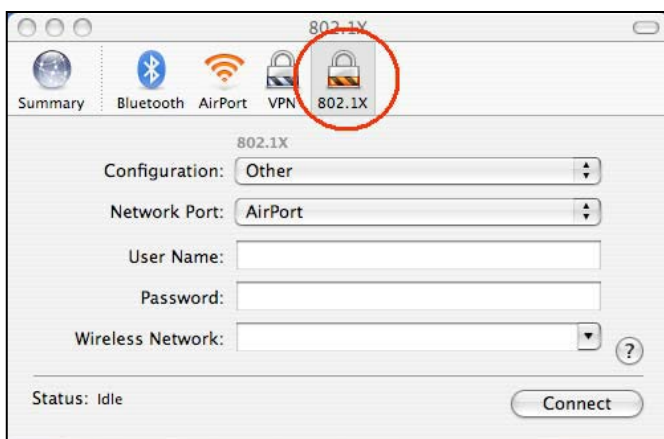
From the **File** menu select **New 802.1x Connection**.

If this option is greyed out 802.1x is already enabled. Go to STEP 8.



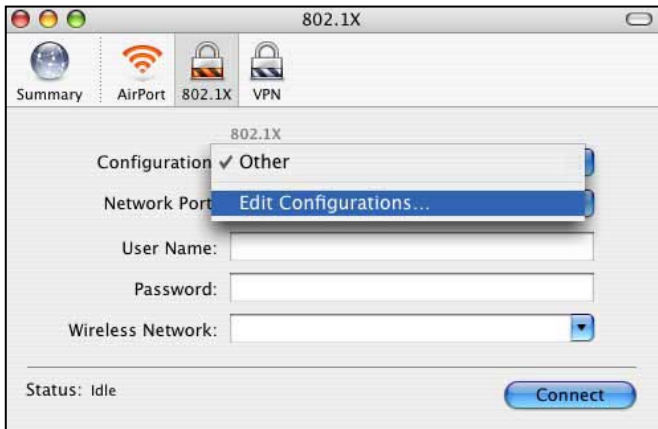
STEP 8:

Select the **802.1x** icon.



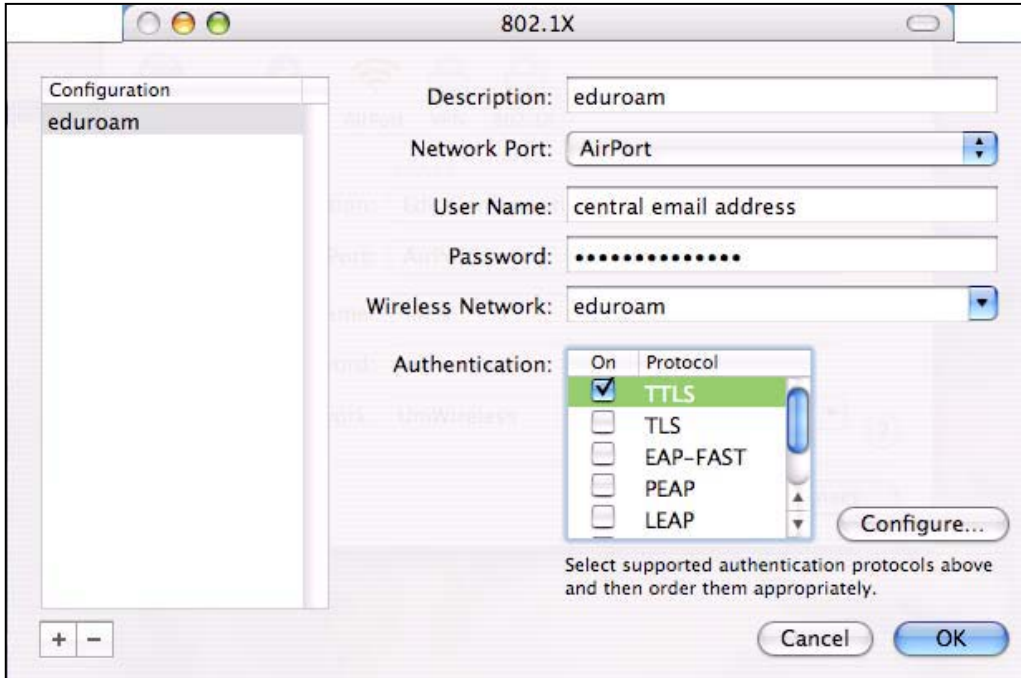
STEP 9:

From the **Configuration** drop down menu select **Edit Configurations**.



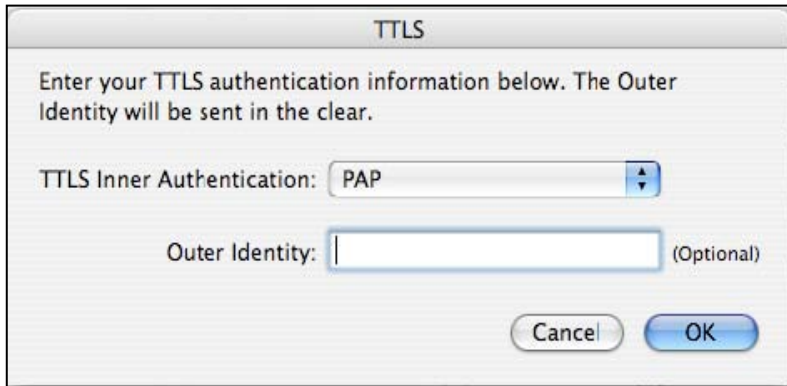
In the **Configuration** that appears, enter the following:

1. Give the configuration an **appropriate Description** eg. eduroam
2. Username: **Your Uni-ID in the following format: abc123@newcastle.edu.au**
3. Password: **Your Internet password**
4. Select **eduroam** from the **Wireless Network** drop down menu
5. From the **Authentication** list ensure that **TTLS** is the only option ticked
Select **TTLS** and click **Configure**



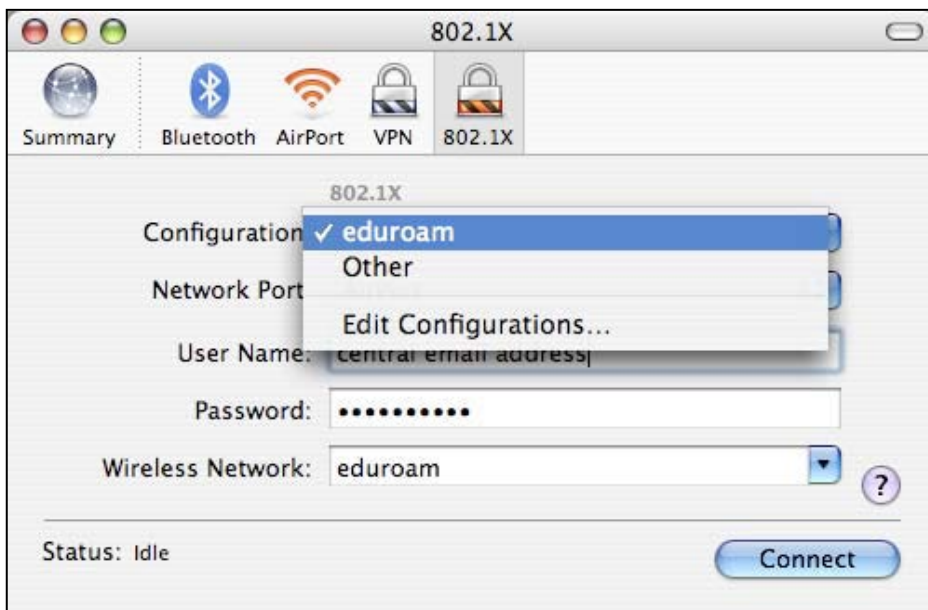
STEP 10:

1. From the **TTLS Inner Authentication** drop down box select **PAP**
2. Leave the **Outer Identity** field blank
3. Click **OK** to close the **TTLS** window and click **OK** to close the **802.1X** configuration window



STEP 11:

From the **Configuration** drop down box select the configuration you set up in **STEP 9**
Click **Connect**



The first time you connect to the **eduroam** network, you will be asked to accept certificates. Click **Continue** and you will be connected.

