



THE UNIVERSITY OF
NEWCASTLE
AUSTRALIA

17000
TRIPLE ZERO

Connecting to Eduroam With Mac OSX 10.5 (Leopard)

NOTE: University of Newcastle staff and students must not use the Eduroam wireless network while located at any of the University campuses where connection to the newcastle.edu.au network is available.

Connecting to eduroam with Mac OSX 10.5

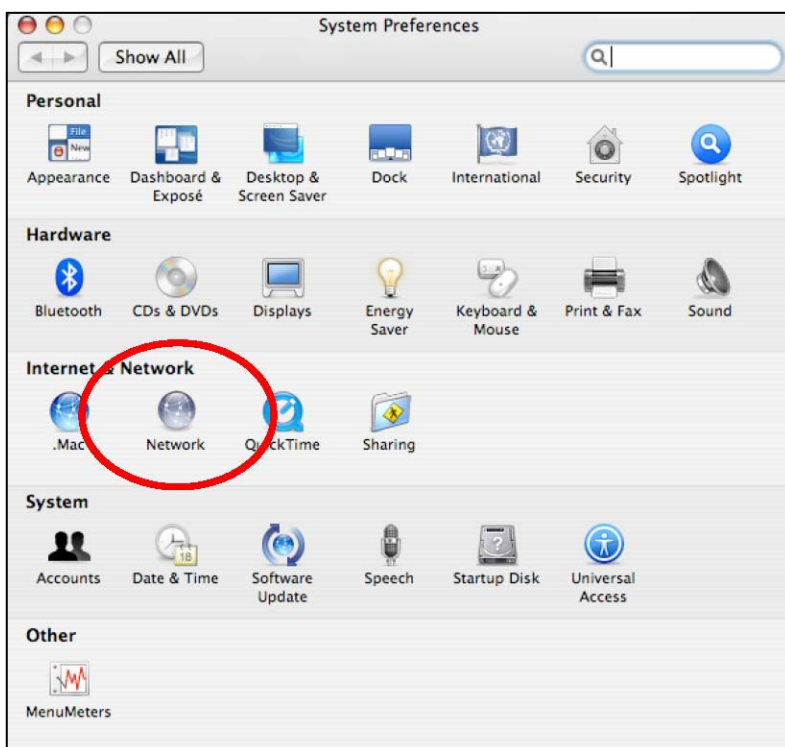
STEP 1:

From the **Apple** menu, select **System Preferences**



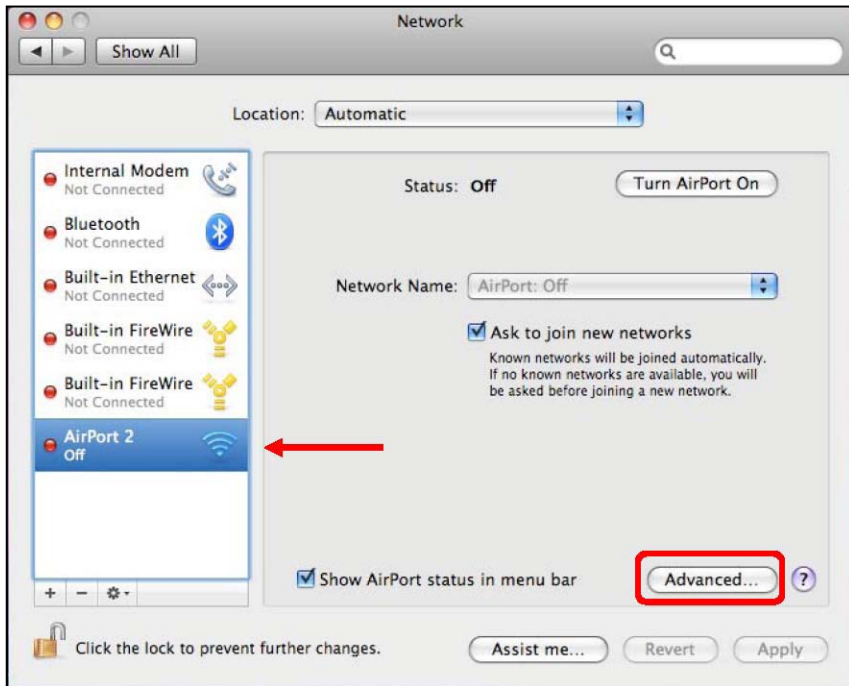
STEP 2:

Select the **Network** icon



STEP 3:

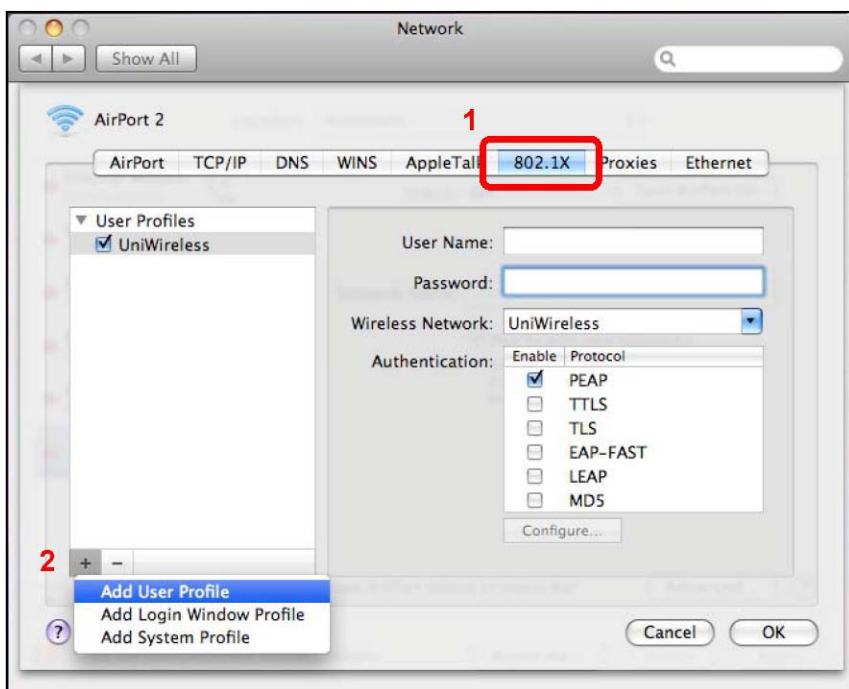
Select the **Airport** item, make sure Airport is off and click the **Advanced** button



STEP 4:

Select the **Airport** item and click the **Advance** button

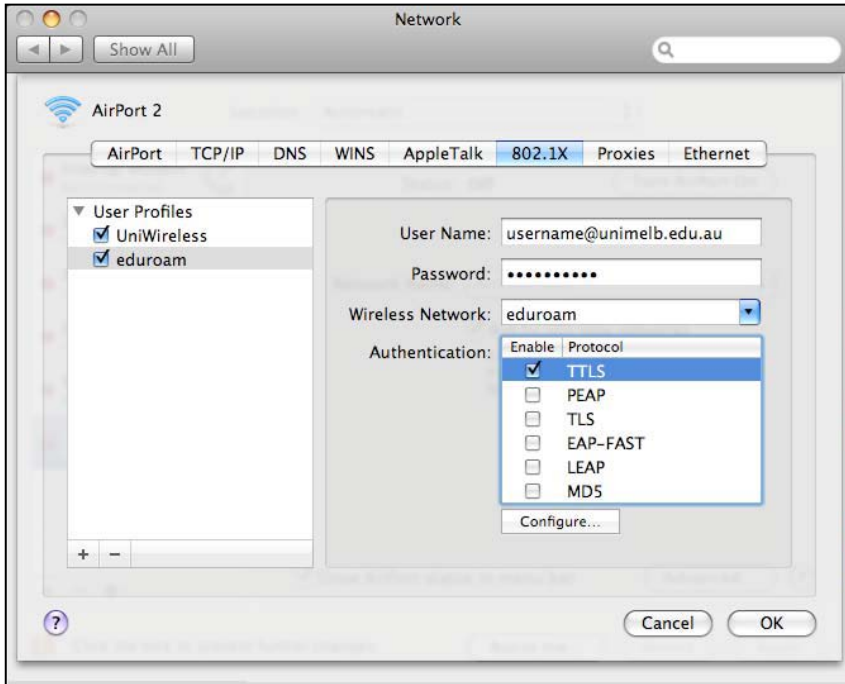
1. Click on the **802.1x** tab
2. Click the **(+)** button in the lower-left corner and select **Add User Profile**



STEP 5:

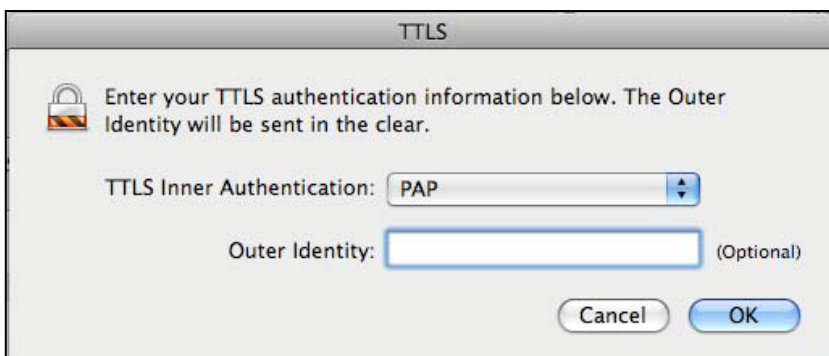
Give your user profile an appropriate name by entering the following information

1. Username: **Your Uni-ID in the following format: abc123@newcastle.edu.au**
2. Password: **Your Internet password**
3. In the **Wireless Network** field enter **eduroam (NOTE: the network name is case sensitive)**
4. From the **Authentication** list ensure that **TTLS** is the only option ticked
Select **TTLS** and click **Configure**



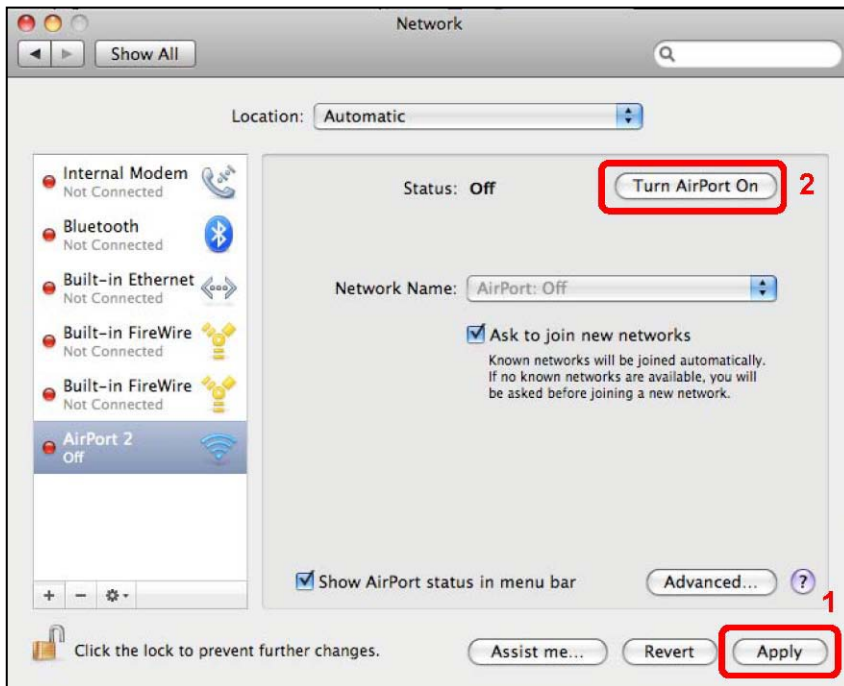
STEP 6:

1. From the TTLS Inner Authentication drop down box select PAP
2. Leave the Outer Identity field blank
3. Click OK to close the TTLS window
4. Click OK to close the Advanced Airport settings and return to the main Network screen



STEP 7:

1. Click Apply
2. Click the **Turn Airport On** button



STEP 8:

From the **Network Name** drop down box select **eduroam**
You should now be connected to the eduroam network.

